



SPLIT-TYPE AIR CONDITIONERS

INDOOR UNIT

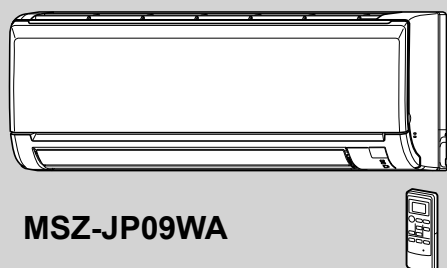
No. OBB820

PARTS CATALOG

Models

MSZ-JP09WA - U1

MSZ-JP12WA - U1

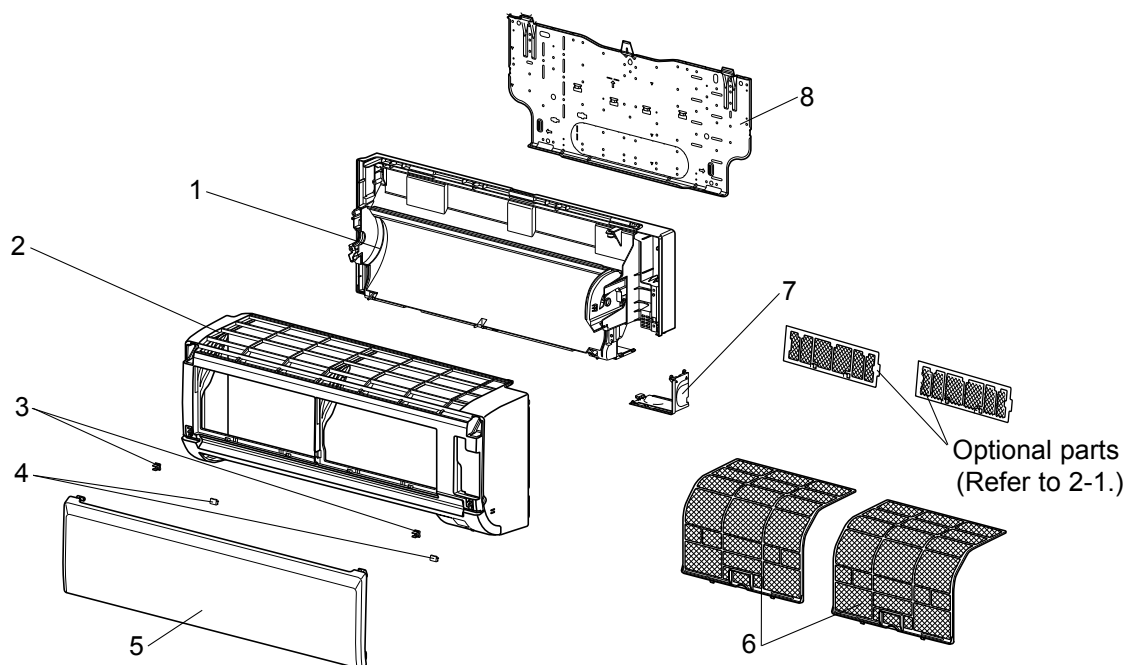
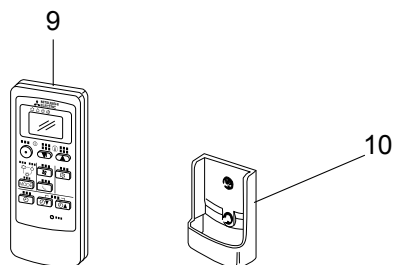


MSZ-JP09WA

CONTENTS

- 1. SERVICE PARTS LIST2
- 2. OPTIONAL PARTS8

SERVICE MANUAL (OBH820)

MSZ-JP09WA MSZ-JP12WA**1-1. INDOOR UNIT STRUCTURAL PARTS****1-2. ACCESSORY AND REMOTE CONTROLLER**

MSZ-JP09WA MSZ-JP12WA**1-1. INDOOR UNIT STRUCTURAL PARTS**

No.	Part No.	Part name	Symbol in Wiring Diagram	Q'ty/unit		Remarks
				MSZ-JP		
				09WA	12WA	
1	U01 A01 234	BOX ASSEMBLY		1	1	
2	U01 A03 000	PANEL ASSEMBLY		1	1	Including No. 3,4,5
3	U01 A01 142	CATCH		2	2	2 PCS/SET
4	U01 A01 067	SCREW CAP		2	2	2 PCS/SET
5	U01 A03 010	FRONT PANEL		1	1	
6	U01 A02 100	ANTI MOLD FILTER		2	2	1 PC/SET
7	U01 A01 975	CORNER BOX RIGHT		1	1	
8	U01 A01 970	INSTALLATION PLATE		1	1	

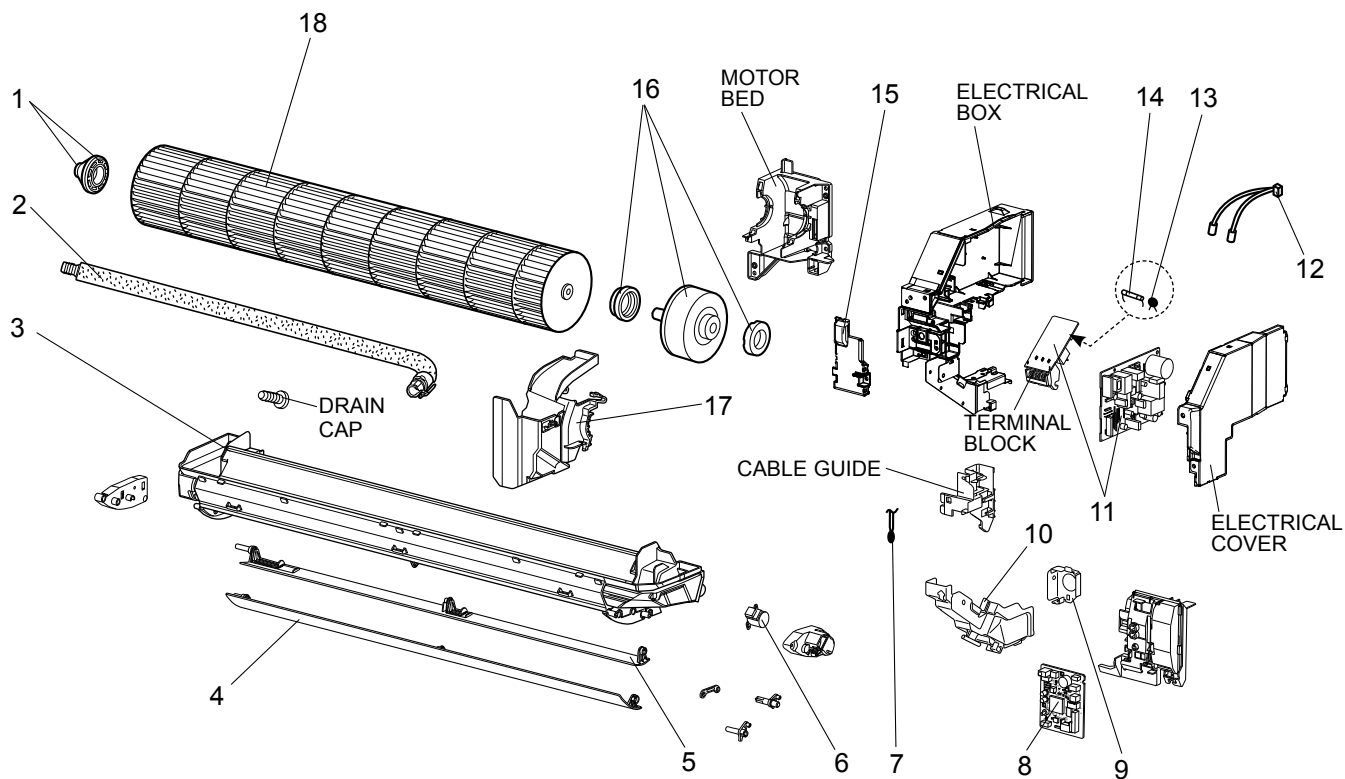
1-2. ACCESSORY AND REMOTE CONTROLLER

No.	Part No.	Part name	Symbol in Wiring Diagram	Q'ty/unit		Remarks
				MSZ-JP		
				09WA	12WA	
9	U01 A05 426	REMOTE CONTROLLER		1	1	MS16A
10	U01 A01 083	REMOTE CONTROLLER HOLDER		1	1	

SERVICE PARTS LIST

MSZ-JP09WA MSZ-JP12WA

1-3. INDOOR UNIT ELECTRICAL PARTS AND FUNCTIONAL PARTS



MSZ-JP09WA MSZ-JP12WA

1-3. INDOOR UNIT ELECTRICAL PARTS AND FUNCTIONAL PARTS

No.	Part No.	Part name	Symbol in Wiring Diagram	Q'ty/unit		Remarks
				MSZ-JP		
				09WA	12WA	
1	U01 A02 510	BEARING MOUNT ASSEMBLY		1	1	Including sleeve bearing
2	U01 A01 702	DRAIN HOSE		1	1	
3	U01 A01 235	NOZZLE ASSEMBLY		1	1	
4	U01 A01 040	VANE-UPPER		1	1	
5	U01 A01 041	VANE-LOWER		1	1	
6	U01 A01 303	VANE MOTOR	MV	1	1	UP & DOWN
7	U01 A01 308	ROOM TEMPERATURE THERMISTOR	RT11	1	1	
8	U01 A35 452	ELECTRONIC CONTROL P.C. BOARD		1		
	U01 A36 452			1		
9	U01 A01 978	CONDUIT PLATE		1	1	
10	U01 A01 979	CONDUIT COVER		1	1	
11	U01 A02 440	POWER P.C. BOARD ※1		1	1	
12	U01 A01 307	INDOOR COIL THERMISTOR	RT12, RT13	1	1	
13	U01 A02 385	VARISTOR	NR11	1	1	
14	U01 A01 382	FUSE	F11	1	1	T3.15AL250V
15	U01 A01 784	V.A. CLAMP		1	1	
16	U01 A02 300	INDOOR FAN MOTOR ※2	MF	1	1	RC0J30-□□
17	U01 A01 333	MOTOR BAND		1	1	
18	U01 A01 302	LINE FLOW FAN		1	1	

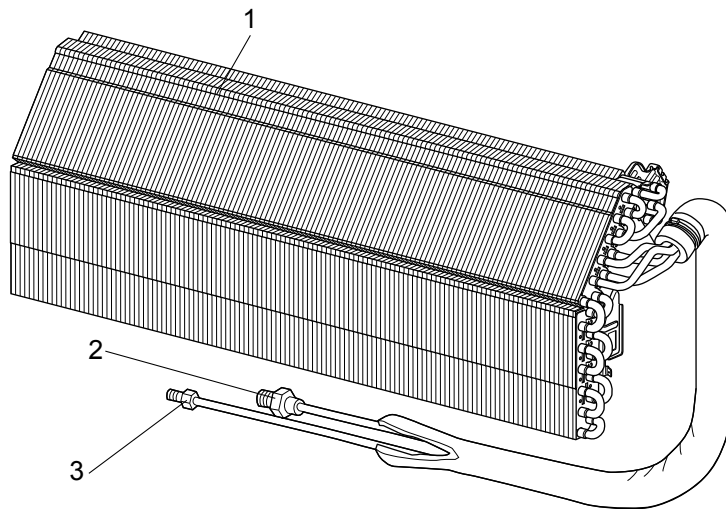
※1 Including TERMINAL BLOCK with TERMINAL P.C. BOARD

※2 Including FAN MOTOR RUBBER MOUNT (2 PCS/SET)

SERVICE PARTS LIST

MSZ-JP09WA MSZ-JP12WA

1-4. INDOOR UNIT HEAT EXCHANGER





MSZ-JP09WA MSZ-JP12WA
1-4. INDOOR UNIT HEAT EXCHANGER

No.	Part No.	Part name	Symbol in Wiring Diagram	Q'ty/unit		Remarks
				MSZ-JP		
				09WA	12WA	
1	U01 A03 620	INDOOR HEAT EXCHANGER		1	1	
2	U01 A01 666	UNION GAS		1	1	ø3/8 (ø9.52)
3	U01 A01 667	UNION LIQUID		1	1	ø1/4 (ø6.35)

2-1. AIR CLEANING FILTER

Every 3 months:

- Remove dirt by a vacuum cleaner.

When dirt cannot be removed by vacuum cleaning:

- Soak the filter and its frame in lukewarm water before rinsing it.
- After washing, dry it well in shade.

Every year:

- Replace it with a new air cleaning filter for best performance.

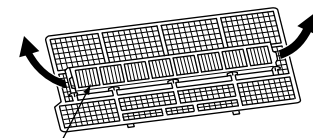
NOTE 1: Clean the filters regularly for best performance and to reduce power consumption.

NOTE 2: Dirty filters cause condensation in the air conditioner which will contribute to the growth of fungi such as mold.
It is therefore recommended to clean air filters every 2 weeks.

(ANTI-ALLERGY ENZYME FILTER)

Model	Part No.
MSZ-JP09WA MSZ-JP12WA	MAC-408FT-E

Pull to remove from the air filter



Air cleaning filter
(Blue bellows type)

MITSUBISHI ELECTRIC CORPORATION

HEAD OFFICE: TOKYO BUILDING, 2-7-3, MARUNOUCHI, CHIYODA-KU, TOKYO 100-8310, JAPAN

© Copyright 2018 MITSUBISHI ELECTRIC CORPORATION

Published: Nov. 2018. No. OBB820

Made in Japan

Specifications are subject to change without notice.