

## Submittal Data Sheet

15.2 SEER2, Air Conditioner System, 2.5 Ton, Outdoor Unit-GSXH503010A\*

Submitted By : Goodman/Amana Unitary Test System

Submitted To : N/A

Tags : AHRI 208144850 Products [GSXH503010A\* , CAPTA3626\*4A\* , GM9S960603BNA\*] , SEER2 15.2 , EER2 12.0

### STANDARD FEATURES:

- High-efficiency scroll compressor
- Copper tube/enhanced aluminum fin coil -5mm diameter on 1.5-3.0T
- Fully charged for 15' of tubing length
- Factory-installed filter drier
- Service valves with sweat connections and easy-to-access gauge ports
- Contactor with lug connection
- Ground lug connection
- AHRI Certified, ETL Listed

### CABINET FEATURES:

- Removable grille-style top design compliant with UL 60335-2-40
- Venturi for increased velocity of airflow
- Heavy-gauge galvanized-steel cabinet
- Attractive Architectural Gray powder-paint finish with 500-hour salt-spray approval
- Steel louver coil guard
- Rust-resistant coated screws
- Single-panel access to controls with space provided for field-installed accessories
- When properly anchored, meets the 2020 Florida Building Code unit integrity requirements for hurricane-type winds (Anchor bracket kits available.)



At Goodman, we believe in American dependability. Units are designed, engineered and assembled in the U.S.A.



## Submittal Data Sheet

15.2 SEER2, Air Conditioner System, 2.5 Ton, Outdoor Unit-GSXH503010A\*

Submitted By : Goodman/Amana Unitary Test System

Submitted To : N/A

Tags : AHRI 208144850 Products [GSXH503010A\* , CAPTA3626\*4A\* , GM9S960603BNA\*] , SEER2 15.2 , EER2 12.0

### SYSTEM PERFORMANCE

Outdoor Unit Model No.:	GSXH503010A*	Description :	15.2 SEER2, Air Conditioner System, 2.5 Ton Outdoor System
Indoor Unit Model No.:	CAPTA3626A4A*		
TXV/PISTON :	Factory		
Furnace Unit Model No.:	GM9S960603BN		
Rated Cooling Conditions:	Outdoor (°F DB/WB):N/A/N/A Indoor (°F DB/WB):N/A/N/A	Rated Heating Conditions:	Outdoor (°F DB/WB):N/A/N/A Indoor (°F DB/WB):N/A/N/A
Rated Cooling Capacity (Btu/hr):	28400	OD Rated Heating Capacity (Btu/hr)	N/A
EER2:	12.0	EER:	13.0
Heating COP:	N/A	SEER2:	15.2
SEER:	16.0	AFUE:	96

### OUTDOOR UNIT DETAILS : GSXH503010A\*

Power Supply (V/Hz/Ph):	208/230/60/1	Compressor Type:	Scroll
Min. Circuit Amps MCA (A):	17.0	Compressor Stages:	Single Stage
Quantity:	1	Max Overcurrent Protection (MOP) (A):	25
Suction Valve Connection Size (in):	-	Compressor Rated Load Amps :	12.8
Liquid Valve Connection Size (in):	-	Refrigerant Type:	R-410A
Sound Power(High/Med/Low) (dBA):	- / - / -	Holding Refrigerant Charge (oz):	101
Cooling Operation Range (°F DB):	- - -	Additional Charge (oz/ft):	-
Heating Operation Range (°F DB):	N/A	Pre-charge Piping (Length) (ft):	-
Net Weight (lb):	-	Dimensions (HxWxD) (in):	- x - x -
Gross Weight (lb):	216	*Max. Pipe Length (Vertical) (ft):	-
*Max. Pipe Length (Total) (ft):	-		

*\*Refer to Long Line Set Application TP-107 for lines greater than 80 ft. or vertical elevation changes more than 50 ft. for single stage equipment and 25 ft. for 2-stage equipment.*



At Goodman, we believe in American dependability. Units are designed, engineered and assembled in the U.S.A.



## Submittal Data Sheet

15.2 SEER2, Air Conditioner System, 2.5 Ton, Outdoor Unit-GSXH503010A\*

Submitted By : Goodman/Amana Unitary Test System

Submitted To : N/A

Tags : AHRI 208144850 Products [GSXH503010A\* , CAPTA3626\*4A\* , GM9S960603BNA\*] , SEER2 15.2 , EER2 12.0

**Outdoor ( GSXH503010 ) Dimensional Drawing is not available**



At Goodman, we believe in American dependability. Units are designed, engineered and assembled in the U.S.A.



## Submittal Data Sheet

15.2 SEER2, Air Conditioner System, 2.5 Ton, Outdoor Unit-GSXH503010A\*

Submitted By : Goodman/Amana Unitary Test System

Submitted To : N/A

Tags : AHRI 208144850 Products [GSXH503010A\* , CAPTA3626\*4A\* , GM9S960603BNA\*] , SEER2 15.2 , EER2 12.0

### STANDARD FEATURES:

- Compact and lightweight all-aluminum evaporator coil with AlumaFin7™ technology
- Optimized for use with R-401A refrigerant
- Factory-installed thermal expansion valves for cooling applications
- Rust resistant, thermoplastic drain pans featuring a low water-retention design
- Foil-faced insulation covers the internal casing to reduce cabinet condensation
- Single-piece access panel with tight seal helps to keep conditioned air from escaping
- Seal tight customized suction and liquid grommets for easy installation and removal
- 21" depth for easier attic access
- Vertical application
- AHRI certified
- ETL Listed

### CABINET FEATURES:

- **DATA IS NOT AVAILABLE**



At Goodman, we believe in American dependability. Units are designed, engineered and assembled in the U.S.A.



Submittal Data Sheet

15.2 SEER2, Air Conditioner System,2.5 Ton, Outdoor Unit-GSXH503010A\*

Submitted By : Goodman/Amana Unitary Test System

Submitted To : N/A

Tags : AHRI 208144850 Products [GSXH503010A\* , CAPTA3626\*4A\* , GM9S960603BNA\*] , SEER2 15.2 , EER2 12.0

INDOOR UNIT DETAILS : CAPTA3626A4A\*

Quantity:	1	Configuration:	
Cased VS Uncased:	Cased	Dimensions (HxWxD) (in) :	28.50 x 23.50 x 26.00
Suction Connection Size (in) :	7/8	Net Weight (lb):	57
Liquid Connection Size (in) :	3/8	Gross Weight (lb):	58
Condensate Connection (in) :	3/4	Power Voltage (lb):	-
Current Type :	-	Power Phase:	-
Power Frequency :	-	Min Voltage :	-
Max Voltage :	-	MCA :	-
MOP :	-	Electric Heat Range :	-
Indoor Blower FLA :	-	Fan Motor Output :	-



At Goodman, we believe in American dependability. Units are designed, engineered and assembled in the U.S.A.



## Submittal Data Sheet

15.2 SEER2, Air Conditioner System, 2.5 Ton, Outdoor Unit-GSXH503010A\*

Submitted By : Goodman/Amana Unitary Test System

Submitted To : N/A

Tags : AHRI 208144850 Products [GSXH503010A\* , CAPTA3626\*4A\* , GM9S960603BNA\*] , SEER2 15.2 , EER2 12.0

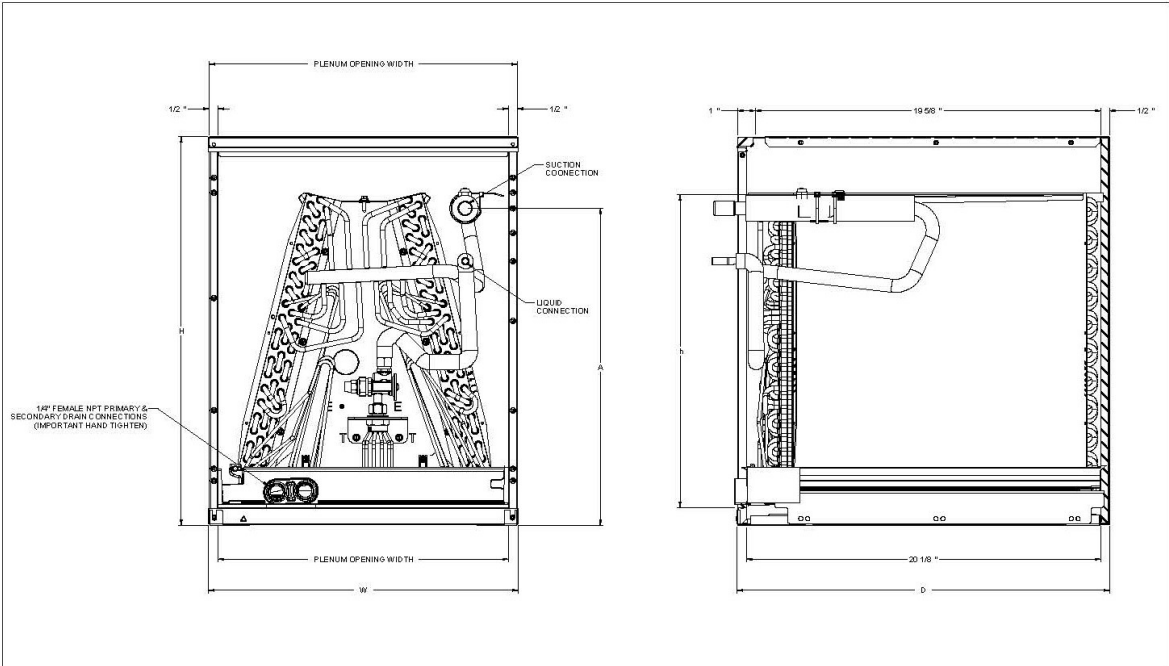
MODEL	CABINET DIMENSIONS			NOMINAL TONS	CONNECTION		SHIP WEIGHT (LBS)
	W	D	H		LIQUID	SUCTION	
CAPTA1818A4	14"	21"	18"	1.5	3/8"	3/4"	36
CAPTA1818B4	17.5"	21"	18"	1.5	3/8"	3/4"	41
CAPTA2422A4	14"	21"	22"	2	3/8"	3/4"	44
CAPTA2422B4	17.5"	21"	22"	2	3/8"	3/4"	48
CAPTA2422C4	21"	21"	22"	2	3/8"	3/4"	53
CAPTA3022A4	14"	21"	22"	2.5	3/8"	3/4"	44
CAPTA3022B4	17.5"	21"	22"	2.5	3/8"	3/4"	48
CAPTA3022C4	21"	21"	22"	2.5	3/8"	3/4"	53
CAPTA3026B4	17.5"	21"	26"	2.5	3/8"	7/8"	50
CAPTA3026C4	21"	21"	26"	2.5	3/8"	7/8"	52
CAPTA3626B4	17.5"	21"	26"	3	3/8"	7/8"	54
CAPTA3626C4	21"	21"	26"	3	3/8"	7/8"	57
CAPTA4230C4	21"	21"	30"	3.5	3/8"	7/8"	63
CAPTA4230D4	24.5"	21"	30"	3.5	3/8"	7/8"	66

<sup>1</sup> (ft<sup>2</sup>)

<sup>2</sup> Shipped with Coil

Note: For a properly matched system and piston sizing information, refer to the piston kit chart of the corresponding outdoor unit.

## DIMENSIONS



At Goodman, we believe in American dependability. Our units are designed, engineered and assembled in the U.S.A.



## Submittal Data Sheet

15.2 SEER2, Air Conditioner System, 2.5 Ton, Outdoor Unit-GSXH503010A\*

Submitted By : Goodman/Amana Unitary Test System

Submitted To : N/A

Tags : AHRI 208144850 Products [GSXH503010A\* , CAPTA3626\*4A\* , GM9S960603BNA\*] , SEER2 15.2 , EER2 12.0

### STANDARD FEATURES:

- Heavy-duty aluminized-steel tubular heat exchanger
- Stainless-steel sloped secondary heat exchanger
- Silicon Nitride igniter
- Color-coded low-voltage terminals
- Multi-speed ECM blower motor with continuous fan speed
- Fault code LED Output
- AHRI Certified - ETL Listed
- Energy Star
- Single-Stage gas Valve
- Furnace control board with self-diagnostics and provisions for electronic air cleaner and 120-volt or 24-volt humidifiers
- Low constant fan speed circulates air throughout the home
- High static
- All models comply with California Ultra-Low NOx 14 ng/J

### CABINET FEATURES:

- DATA IS NOT AVAILABLE



At Goodman, we believe in American dependability. Units are designed, engineered and assembled in the U.S.A.



## Submittal Data Sheet

15.2 SEER2, Air Conditioner System,2.5 Ton, Outdoor Unit-GSXH503010A\*

Submitted By : Goodman/Amana Unitary Test System

Submitted To : N/A

Tags : AHRI 208144850 Products [GSXH503010A\* , CAPTA3626\*4A\* , GM9S960603BNA\*] , SEER2 15.2 , EER2 12.0

### INDOOR FURNACE UNIT DETAILS : GM9S960603BNA\*

Configuration:	Upflow/Horizontal	Blower/Motor Size:	Nine Speed ECM
NOx:	Natural Gas	Communication:	Non-Communicating
Power Supply (V/Hz/Ph):	115/60/1	Temperature Rise Range High Fire (° F):	35-65
Min. Circuit Amps MCA (A):	10.3	Temperature Rise Range Low Fire (° F):	-
Max Overcurrent Protection (MOP) (A):	15.0	High Fire Input Capacity :	60000
AFUE :	96	High Fire Output Capacity :	57660
Vent Diameter (In):	4	Low Fire Input Capacity :	-
Net Weight (lb):	111	Low fire output Capacity :	-
Gross Weight (lb):	119	Dimensions (HxWxD) (in):	33-3/8 x 17-1/2 x 28
Power Voltage (lb):	115	Current Type :	-
Power Phase:	1	Power Frequency :	60
Min Voltage :	-	Max Voltage :	-
MCA :	10.3	MOP :	15.0
Electric Heat Range :	-	Indoor Blower FLA :	-
Fan Motor Output :	-	Outdoor Fan LRA :	-



At Goodman, we believe in American dependability. Units are designed, engineered and assembled in the U.S.A.



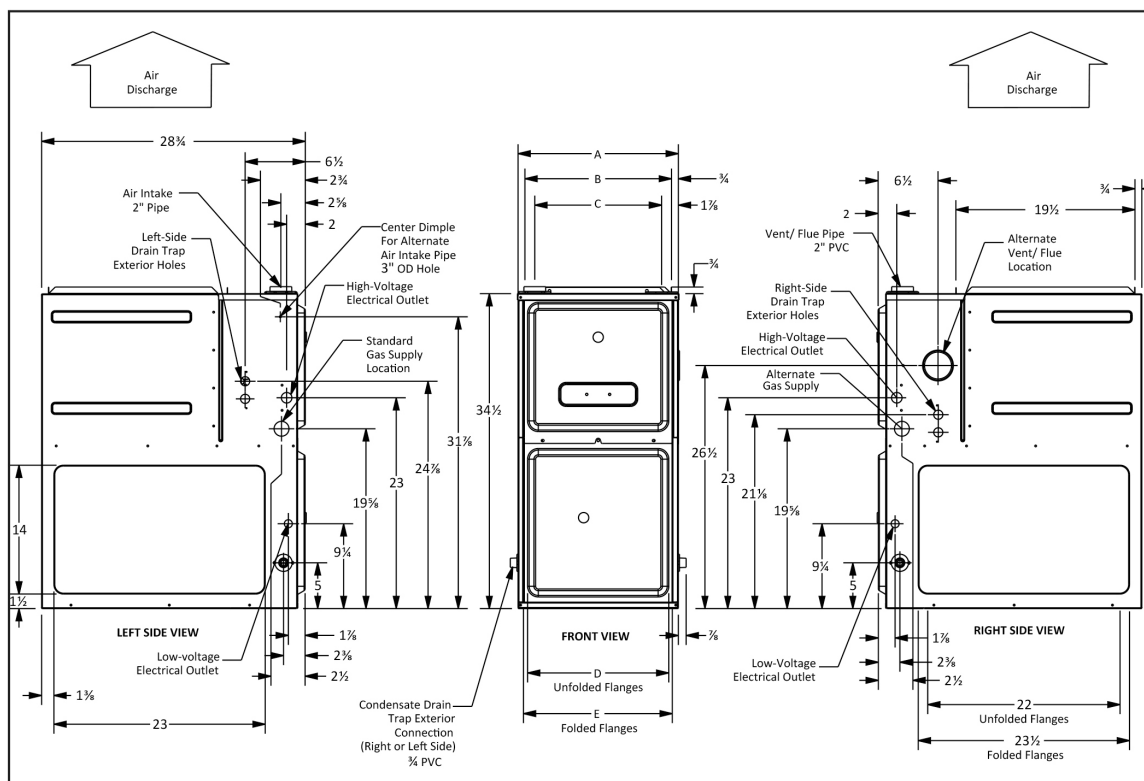
## Submittal Data Sheet

15.2 SEER2, Air Conditioner System, 2.5 Ton, Outdoor Unit-GSXH503010A\*

Submitted By : Goodman/Amana Unitary Test System

Submitted To : N/A

Tags : AHRI 208144850 Products [GSXH503010A\* , CAPTA3626\*4A\* , GM9S960603BNA\*] , SEER2 15.2 , EER2 12.0



MODEL	A	B	C	D	E
GM9S960403AN	14"	12 1/2"	10 1/2"	8 5/8"	10 5/8"
GM9S960603BN	17 1/2"	16"	13 3/4"	12 1/2"	13 3/4"
GM9S960803BN	17 1/2"	16"	13 3/8"	12 1/2"	13 3/8"
GM9S960804CN	21"	19 1/2"	17 3/4"	16"	17 1/2"
GM9S960805CN	21"	19 1/2"	17 3/8"	16"	17 1/2"
GM9S961005CN	21"	19 1/2"	17 3/8"	16"	17 1/2"
GM9S961205DN	24 1/2"	23"	20 5/8"	19 3/8"	20 5/8"

### MINIMUM CLEARANCES TO COMBUSTIBLE MATERIALS

POSITION	SIDES	REAR	FRONT	BOTTOM	FLUE	TOP
Upflow	0"	0"	3"	C	0"	1"
Horizontal	6"	0"	3"	C	0"	6"

C = If placed on combustible floor, the floor MUST be wood ONLY.



designed, engineered and assembled in the U.S.A.

re

