

## Submittal Data Sheet

15.0 SEER2, Air Conditioner System, 2.5 Ton, Outdoor Unit-GSXH503010A\*

Submitted By : Goodman/Amana Unitary Test System

Submitted To : N/A

Tags : AHRI 210626282 Products [GSXH503010A\* , CA\*FA3626\*6A\*+TXV, GM9C960603BNA\*] , SEER2 15.0 , EER2 12.0

### STANDARD FEATURES:

- High-efficiency scroll compressor
- Copper tube/enhanced aluminum fin coil -5mm diameter on 1.5-3.0T
- Fully charged for 15' of tubing length
- Factory-installed filter drier
- Service valves with sweat connections and easy-to-access gauge ports
- Contactor with lug connection
- Ground lug connection
- AHRI Certified, ETL Listed

### CABINET FEATURES:

- Removable grille-style top design compliant with UL 60335-2-40
- Venturi for increased velocity of airflow
- Heavy-gauge galvanized-steel cabinet
- Attractive Architectural Gray powder-paint finish with 500-hour salt-spray approval
- Steel louver coil guard
- Rust-resistant coated screws
- Single-panel access to controls with space provided for field-installed accessories
- When properly anchored, meets the 2020 Florida Building Code unit integrity requirements for hurricane-type winds (Anchor bracket kits available.)



At Goodman, we believe in American dependability. Units are designed, engineered and assembled in the U.S.A.



## Submittal Data Sheet

15.0 SEER2, Air Conditioner System, 2.5 Ton, Outdoor Unit-GSXH503010A\*

Submitted By : Goodman/Amana Unitary Test System

Submitted To : N/A

Tags : AHRI 210626282 Products [GSXH503010A\* , CA\*FA3626\*6A\*+TXV, GM9C960603BNA\*] , SEER2 15.0 , EER2 12.0

### SYSTEM PERFORMANCE

Outdoor Unit Model No.:	GSXH503010A*	Description :	15.0 SEER2, Air Conditioner System, 2.5 Ton Outdoor System
Indoor Unit Model No.:	CAUFA3626B6A*		
TXV/PISTON :	TX3N4		
Furnace Unit Model No.:	GM9C960603BN		
Rated Cooling Conditions:	Outdoor (°F DB/WB):N/A/N/A Indoor (°F DB/WB):N/A/N/A	Rated Heating Conditions:	Outdoor (°F DB/WB):N/A/N/A Indoor (°F DB/WB):N/A/N/A
Rated Cooling Capacity (Btu/hr):	28400	OD Rated Heating Capacity (Btu/hr)	N/A
EER2:	12.0	EER:	12.5
Heating COP:	N/A	SEER2:	15.0
SEER:	15.5	AFUE:	96

### OUTDOOR UNIT DETAILS : GSXH503010A\*

Power Supply (V/Hz/Ph):	208/230/60/1	Compressor Type:	Scroll
Min. Circuit Amps MCA (A):	17.0	Compressor Stages:	Single Stage
Quantity:	1	Max Overcurrent Protection (MOP) (A):	25
Suction Valve Connection Size (in):	-	Compressor Rated Load Amps :	12.8
Liquid Valve Connection Size (in):	-	Refrigerant Type:	R-410A
Sound Power(High/Med/Low) (dBA):	- / - / -	Holding Refrigerant Charge (oz):	101
Cooling Operation Range (°F DB):	- - -	Additional Charge (oz/ft):	-
Heating Operation Range (°F DB):	N/A	Pre-charge Piping (Length) (ft):	-
Net Weight (lb):	-	Dimensions (HxWxD) (in):	- x - x -
Gross Weight (lb):	216	*Max. Pipe Length (Vertical) (ft):	-
*Max. Pipe Length (Total) (ft):	-		

*\*Refer to Long Line Set Application TP-107 for lines greater than 80 ft. or vertical elevation changes more than 50 ft. for single stage equipment and 25 ft. for 2-stage equipment.*



At Goodman, we believe in American dependability. Units are designed, engineered and assembled in the U.S.A.



## Submittal Data Sheet

15.0 SEER2, Air Conditioner System, 2.5 Ton, Outdoor Unit-GSXH503010A\*

Submitted By : Goodman/Amana Unitary Test System

Submitted To : N/A

Tags : AHRI 210626282 Products [GSXH503010A\* , CA\*FA3626\*6A\*+TXV, GM9C960603BNA\*] , SEER2 15.0 , EER2 12.0

**Outdoor ( GSXH503010 ) Dimensional Drawing is not available**



At Goodman, we believe in American dependability. Units are designed, engineered and assembled in the U.S.A.



## Submittal Data Sheet

15.0 SEER2, Air Conditioner System, 2.5 Ton, Outdoor Unit-GSXH503010A\*

Submitted By : Goodman/Amana Unitary Test System

Submitted To : N/A

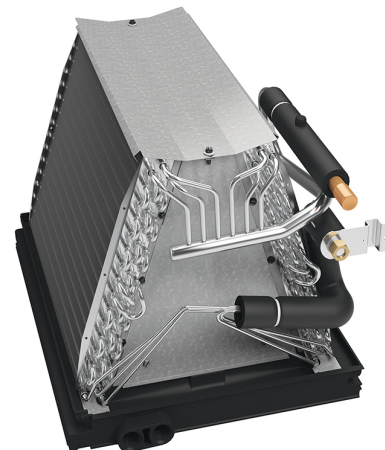
Tags : AHRI 210626282 Products [GSXH503010A\* , CA\*FA3626\*6A\*+TXV, GM9C960603BNA\*] , SEER2 15.0 , EER2 12.0

### STANDARD FEATURES:

- Compact and lightweight all-aluminum evaporator coil with AlumaFin7™ technology
- Optimized for use with R-401A refrigerant
- Check flowrator for cooling and applications
- Rust resistant, thermoplastic drain pans featuring a low water-retention design
- Foil-faced insulation covers the internal casing to reduce cabinet condensation
- Single-piece access panel with tight seal helps to keep conditioned air from escaping
- Seal tight customized suction and liquid grommets for easy installation and removal
- 21" depth for easier attic access
- Vertical application
- AHRI certified
- ETL Listed

### CABINET FEATURES:

- **DATA IS NOT AVAILABLE**



At Goodman, we believe in American dependability. Units are designed, engineered and assembled in the U.S.A.



Submittal Data Sheet

15.0 SEER2, Air Conditioner System,2.5 Ton, Outdoor Unit-GSXH503010A\*

Submitted By : Goodman/Amana Unitary Test System

Submitted To : N/A

Tags : AHRI 210626282 Products [GSXH503010A\* , CA\*FA3626\*6A\*+TXV, GM9C960603BNA\*] , SEER2 15.0 , EER2 12.0

INDOOR UNIT DETAILS : CAUFA3626B6A\*

Quantity:	1	Configuration:	
Cased VS Uncased:	Uncased	Dimensions (HxWxD) (in) :	21.00 x 16.00 x 20
Suction Connection Size (in) :	7/8	Net Weight (lb):	25
Liquid Connection Size (in) :	3/8	Gross Weight (lb):	26
Condensate Connection (in) :	3/4	Power Voltage (lb):	-
Current Type :	-	Power Phase:	-
Power Frequency :	-	Min Voltage :	-
Max Voltage :	-	MCA :	-
MOP :	-	Electric Heat Range :	-
Indoor Blower FLA :	-	Fan Motor Output :	-



At Goodman, we believe in American dependability. Units are designed, engineered and assembled in the U.S.A.



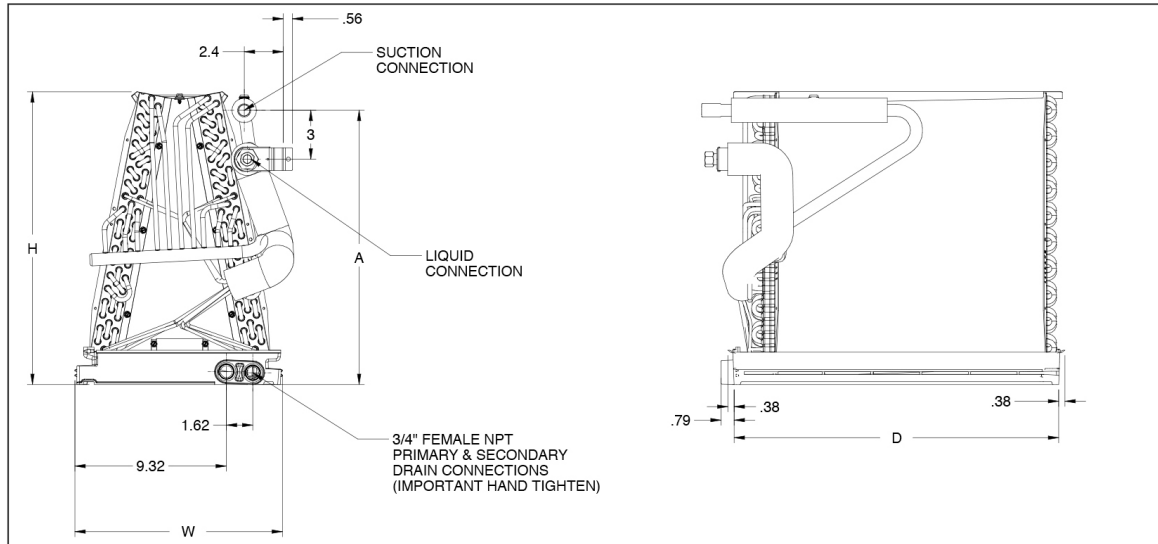
## Submittal Data Sheet

15.0 SEER2, Air Conditioner System, 2.5 Ton, Outdoor Unit-GSXH503010A\*

Submitted By : Goodman/Amana Unitary Test System

Submitted To : N/A

Tags : AHRI 210626282 Products [GSXH503010A\* , CA\*FA3626\*6A\*+TXV, GM9C960603BNA\*] , SEER2 15.0 , EER2 12.0



At Goodman, we believe in American dependability. Units are designed, engineered and assembled in the U.S.A.



## Submittal Data Sheet

15.0 SEER2, Air Conditioner System, 2.5 Ton, Outdoor Unit-GSXH503010A\*

Submitted By : Goodman/Amana Unitary Test System

Submitted To : N/A

Tags : AHRI 210626282 Products [GSXH503010A\* , CA\*FA3626\*6A\*+TXV, GM9C960603BNA\*] , SEER2 15.0 , EER2 12.0

### STANDARD FEATURES:

- DATA IS NOT AVAILABLE

### CABINET FEATURES:

- DATA IS NOT AVAILABLE



At Goodman, we believe in American dependability. Units are designed, engineered and assembled in the U.S.A.



### Submittal Data Sheet

15.0 SEER2, Air Conditioner System,2.5 Ton, Outdoor Unit-GSXH503010A\*

Submitted By : Goodman/Amana Unitary Test System

Submitted To : N/A

Tags : AHRI 210626282 Products [GSXH503010A\* , CA\*FA3626\*6A\*+TXV, GM9C960603BNA\*] , SEER2 15.0 , EER2 12.0

#### INDOOR FURNACE UNIT DETAILS : GM9C960603BNA\*

Configuration:	Upflow/Horizontal	Blower/Motor Size:	Multi Speed ECM
NOx:	Natural Gas	Communication:	Non-Communicating
Power Supply (V/Hz/Ph):	115/60/1	Temperature Rise Range High Fire (° F):	35-65
Min. Circuit Amps MCA (A):	7.5	Temperature Rise Range Low Fire (° F):	25-55
Max Overcurrent Protection (MOP) (A):	15	High Fire Input Capacity :	60000
AFUE :	96	High Fire Output Capacity :	57600
Vent Diameter (In):	-	Low Fire Input Capacity :	42000
Net Weight (lb):	1105	Low fire output Capacity :	40320
Gross Weight (lb):	120	Dimensions (HxWxD) (in):	33-3/8 x 17-1/2 x 28
Power Voltage (lb):	115	Current Type :	-
Power Phase:	1	Power Frequency :	60
Min Voltage :	-	Max Voltage :	-
MCA :	7.5	MOP :	15
Electric Heat Range :	-	Indoor Blower FLA :	-
Fan Motor Output :	-	Outdoor Fan LRA :	-



At Goodman, we believe in American dependability. Units are designed, engineered and assembled in the U.S.A.





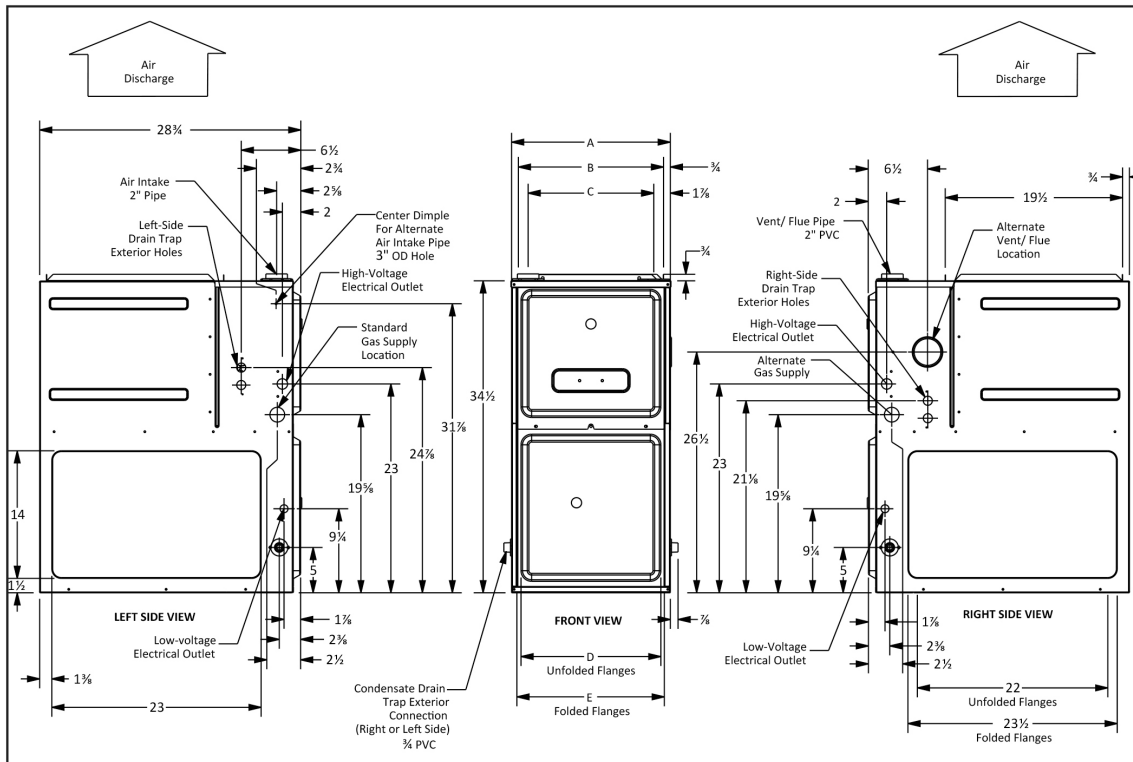
## Submittal Data Sheet

15.0 SEER2, Air Conditioner System, 2.5 Ton, Outdoor Unit-GSXH503010A\*

Submitted By : Goodman/Amana Unitary Test System

Submitted To : N/A

Tags : AHRI 210626282 Products [GSXH503010A\* , CA\*FA3626\*6A\*+TXV, GM9C960603BNA\*], SEER2 15.0 , EER2 12.0



		AIR DISCHARGE			AIR RETURN
MODEL	A	B	C	D	E
GM9C960303ANA	14"	12½"	10½"	8¾"	10⅝"
GM9C960403ANA	14"	12½"	10½"	8¾"	10⅝"
GM9C960603ANA	14"	12½"	10½"	8¾"	10⅝"
GM9C960603BNA	17½"	16"	13⅝"	12⅝"	13⅝"
GM9C960803BNA	17½"	16"	13⅝"	12⅝"	13⅝"
GM9C960804CNA	21"	19½"	17⅝"	16"	17½"
GM9C961004CNA	21"	19½"	17⅝"	16"	17½"
GM9C961005CNA	21"	19½"	17⅝"	16"	17½"
GM9C961205DNA	24½"	23"	20⅝"	19⅝"	20⅝"

### MINIMUM CLEARANCES TO COMBUSTIBLE MATERIALS

POSITION	SIDES	REAR	FRONT	BOTTOM	FLUE	TOP
Upflow	0"	0"	3"	C	0"	1"
Horizontal	6"	0"	3"	C	0"	6"

C = If placed on combustible floor, the floor **MUST** be wood **ONLY**.

