

Submittal Data Sheet

15.0 SEER2, Air Conditioner System, 3.0 Ton, Outdoor Unit-GSXN403610A*

Submitted By : Goodman/Amana Unitary Test System

Submitted To : N/A

Tags : AHRI 208799871 Products [GSXN403610A* , CAPTA4230*4A* , GMVC961005CNB*] , SEER2 15.0 , EER2 11.7

STANDARD FEATURES:

- Energy-efficient compressor
- Copper tube/enhanced aluminum fin coil-5mm diameter on 1.5-4.0 Ton
- Factory-installed filter drier
- Fully charged for 15' of tubing length
- Service valves with sweat connections and easy-to-access gauge ports
- Contactor with lug connection
- Ground lug connection
- AHRI Certified
- ETL Tested

CABINET FEATURES:

- Removable grille-style top design compliant with UL 60335-2-40
- Venturi for increased velocity of airflow
- Heavy-gauge galvanized-steel cabinet
- Attractive Architectural Gray powder-paint finish with 500-hour salt-spray approval
- Steel louver coil guard
- Rust-resistant coated screws
- Single-panel access to controls with space provided for field-installed accessories
- When properly anchored, meets the 2020 Florida Building Code unit integrity requirements for hurricane-type winds (Anchor bracket kits available.)



At Goodman, we believe in American dependability. Units are designed, engineered and assembled in the U.S.A.



Submittal Data Sheet

15.0 SEER2, Air Conditioner System, 3.0 Ton, Outdoor Unit-GSXN403610A*

Submitted By : Goodman/Amana Unitary Test System

Submitted To : N/A

Tags : AHRI 208799871 Products [GSXN403610A* , CAPTA4230*4A* , GMVC961005CNB*] , SEER2 15.0 , EER2 11.7

SYSTEM PERFORMANCE

Outdoor Unit Model No.:	GSXN403610A*	Description :	15.0 SEER2, Air Conditioner System, 3.0 Ton Outdoor System
Indoor Unit Model No.:	CAPTA4230A4A*		
TXV/PISTON :	N/A		
Furnace Unit Model No.:	GMVC961005CN		
Rated Cooling Conditions:	Outdoor (°F DB/WB):N/A/N/A Indoor (°F DB/WB):N/A/N/A	Rated Heating Conditions:	Outdoor (°F DB/WB):N/A/N/A Indoor (°F DB/WB):N/A/N/A
Rated Cooling Capacity (Btu/hr):	N/A	OD Rated Heating Capacity (Btu/hr)	N/A
EER2:	11.7	EER:	N/A
Heating COP:	N/A	SEER2:	15.0
SEER:	N/A	AFUE:	96

OUTDOOR UNIT DETAILS : GSXN403610A*

Power Supply (V/Hz/Ph):	208/230/60/1	Compressor Type:	-
Min. Circuit Amps MCA (A):	23.3	Compressor Stages:	-
Quantity:	1	Max Overcurrent Protection (MOP) (A):	35
Suction Valve Connection Size (in):	-	Compressor Rated Load Amps :	16.0
Liquid Valve Connection Size (in):	-	Refrigerant Type:	-
Sound Power(High/Med/Low) (dBA):	- / - / -	Holding Refrigerant Charge (oz):	95.6
Cooling Operation Range (°F DB):	- - -	Additional Charge (oz/ft):	-
Heating Operation Range (°F DB):	N/A	Pre-charge Piping (Length) (ft):	-
Net Weight (lb):	210	Dimensions (HxWxD) (in):	35.75 x 35.5 x 35.5
Gross Weight (lb):	212	*Max. Pipe Length (Vertical) (ft):	-
*Max. Pipe Length (Total) (ft):	-		

**Refer to Long Line Set Application TP-107 for lines greater than 80 ft. or vertical elevation changes more than 50 ft. for single stage equipment and 25 ft. for 2-stage equipment.*



At Goodman, we believe in American dependability. Units are designed, engineered and assembled in the U.S.A.



Submittal Data Sheet

15.0 SEER2, Air Conditioner System, 3.0 Ton, Outdoor Unit-GSXN403610A*

Submitted By : Goodman/Amana Unitary Test System

Submitted To : N/A

Tags : AHRI 208799871 Products [GSXN403610A* , CAPTA4230*4A* , GMVC961005CNB*] , SEER2 15.0 , EER2 11.7

Outdoor (GSXN403610) Dimensional Drawing is not available



At Goodman, we believe in American dependability. Units are designed, engineered and assembled in the U.S.A.



Submittal Data Sheet

15.0 SEER2, Air Conditioner System, 3.0 Ton, Outdoor Unit-GSXN403610A*

Submitted By : Goodman/Amana Unitary Test System

Submitted To : N/A

Tags : AHRI 208799871 Products [GSXN403610A* , CAPTA4230*4A* , GMVC961005CNB*] , SEER2 15.0 , EER2 11.7

STANDARD FEATURES:

- Compact and lightweight all-aluminum evaporator coil with AlumaFin7™ technology
- Optimized for use with R-401A refrigerant
- Factory-installed thermal expansion valves for cooling applications
- Rust resistant, thermoplastic drain pans featuring a low water-retention design
- Foil-faced insulation covers the internal casing to reduce cabinet condensation
- Single-piece access panel with tight seal helps to keep conditioned air from escaping
- Seal tight customized suction and liquid grommets for easy installation and removal
- 21" depth for easier attic access
- Vertical application
- AHRI certified
- ETL Listed

CABINET FEATURES:

- **DATA IS NOT AVAILABLE**



At Goodman, we believe in American dependability. Units are designed, engineered and assembled in the U.S.A.



Submittal Data Sheet

15.0 SEER2, Air Conditioner System,3.0 Ton, Outdoor Unit-GSXN403610A*

Submitted By : Goodman/Amana Unitary Test System

Submitted To : N/A

Tags : AHRI 208799871 Products [GSXN403610A* , CAPTA4230*4A*, GMVC961005CNB*] , SEER2 15.0 , EER2 11.7

INDOOR UNIT DETAILS : CAPTA4230A4A*

Quantity:	1	Configuration:	
Cased VS Uncased:	CASED	Dimensions (HxWxD) (in) :	32.50 x 27.00 x 26.00
Suction Connection Size (in) :	7/8	Net Weight (lb):	63
Liquid Connection Size (in) :	3/8	Gross Weight (lb):	64
Condensate Connection (in) :	3/4	Power Voltage (lb):	-
Current Type :	-	Power Phase:	-
Power Frequency :	-	Min Voltage :	-
Max Voltage :	-	MCA :	-
MOP :	-	Electric Heat Range :	-
Indoor Blower FLA :	-	Fan Motor Output :	-



At Goodman, we believe in American dependability. Units are designed, engineered and assembled in the U.S.A.



Submittal Data Sheet

15.0 SEER2, Air Conditioner System, 3.0 Ton, Outdoor Unit-GSXN403610A*

Submitted By : Goodman/Amana Unitary Test System

Submitted To : N/A

Tags : AHRI 208799871 Products [GSXN403610A* , CAPTA4230*4A* , GMVC961005CNB*] , SEER2 15.0 , EER2 11.7

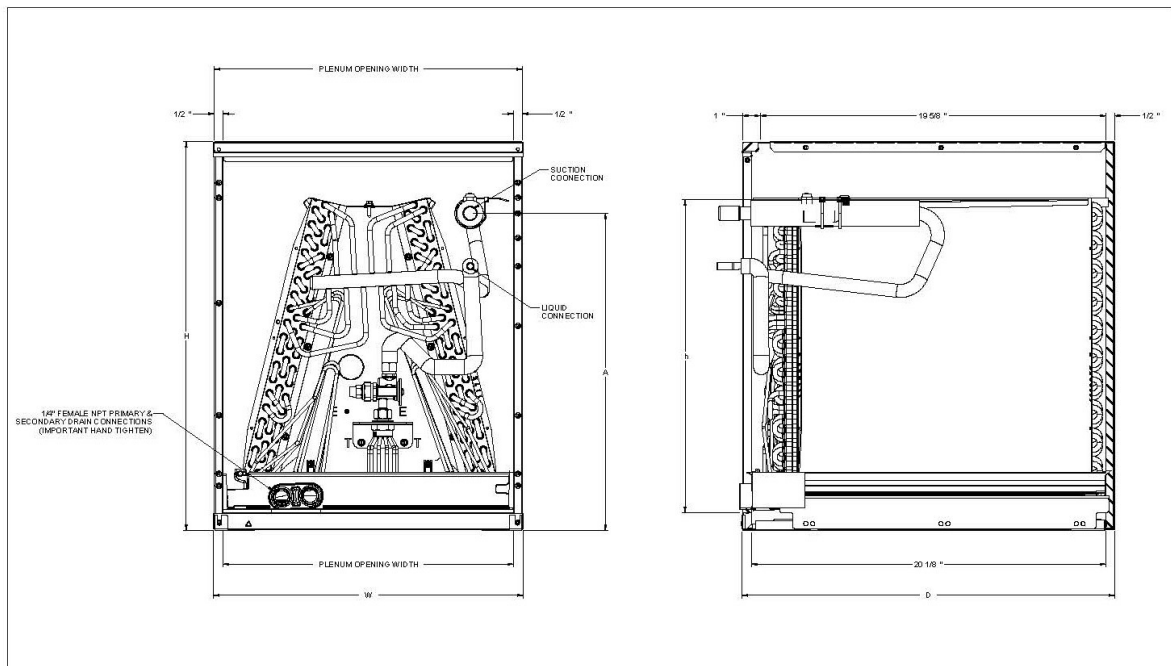
MODEL	CABINET DIMENSIONS			NOMINAL TONS	CONNECTION		SHIP WEIGHT (LBS)
	W	D	H		LIQUID	SUCTION	
CAPTA1818A4	14"	21"	18"	1.5	3/8"	3/4"	36
CAPTA1818B4	17.5"	21"	18"	1.5	3/8"	3/4"	41
CAPTA2422A4	14"	21"	22"	2	3/8"	3/4"	44
CAPTA2422B4	17.5"	21"	22"	2	3/8"	3/4"	48
CAPTA2422C4	21"	21"	22"	2	3/8"	3/4"	53
CAPTA3022A4	14"	21"	22"	2.5	3/8"	3/4"	44
CAPTA3022B4	17.5"	21"	22"	2.5	3/8"	3/4"	48
CAPTA3022C4	21"	21"	22"	2.5	3/8"	3/4"	53
CAPTA3026B4	17.5"	21"	26"	2.5	3/8"	7/8"	50
CAPTA3026C4	21"	21"	26"	2.5	3/8"	7/8"	52
CAPTA3626B4	17.5"	21"	26"	3	3/8"	7/8"	54
CAPTA3626C4	21"	21"	26"	3	3/8"	7/8"	57
CAPTA4230C4	21"	21"	30"	3.5	3/8"	7/8"	63
CAPTA4230D4	24.5"	21"	30"	3.5	3/8"	7/8"	66

¹ (ft²)

² Shipped with Coil

Note: For a properly matched system and piston sizing information, refer to the piston kit chart of the corresponding outdoor unit.

DIMENSIONS



At Goodman, we believe in American dependability. Our units are designed, engineered and assembled in the U.S.A.



Submittal Data Sheet

15.0 SEER2, Air Conditioner System, 3.0 Ton, Outdoor Unit-GSXN403610A*

Submitted By : Goodman/Amana Unitary Test System

Submitted To : N/A

Tags : AHRI 208799871 Products [GSXN403610A* , CAPTA4230*4A* , GMVC961005CNB*] , SEER2 15.0 , EER2 11.7

STANDARD FEATURES:

- Heavy-duty aluminized-steel tubular heat exchanger
- Efficient and quiet variable-speed Blower
- Integrated communicating ComfortBridge™ technology
- Commissioning and diagnostics via on board Bluetooth with the CoolCloud™ phone and tablet application
- Stainless-steel sloped secondary heat exchanger
- Silicon Nitride igniter
- Dual 7-segment display
- Color-coded low-voltage terminals
- Two-Stage gas valve
- All models comply with California 40 ng/J
- AHRI Certified, ETL Listed
- Energy Star
- Furnace control board with self-diagnostics and provisions for electronic air cleaner and 120-volt or 24-volt humidifiers

CABINET FEATURES:

- Multi-position installation: upflow, horizontal left or right
- Certified for direct vent (2-pipe) or non-direct vent (1 pipe)
- Easy to install top venting with optional side vent
- Convenient left or right connection for gas and electrical service
- Cabinet air leakage (Qleak) less than or equal to 2%
- Fully insulated heat exchanger and blower section
- Bottom or side return air applications
- Heavy-gage steel cabinet with durable finish



At Goodman, we believe in American dependability. Units are designed, engineered and assembled in the U.S.A.



Submittal Data Sheet

15.0 SEER2, Air Conditioner System,3.0 Ton, Outdoor Unit-GSXN403610A*

Submitted By : Goodman/Amana Unitary Test System

Submitted To : N/A

Tags : AHRI 208799871 Products [GSXN403610A* , CAPTA4230*4A*, GMVC961005CNB*] , SEER2 15.0 , EER2 11.7

INDOOR FURNACE UNIT DETAILS : GMVC961005CNB*

Configuration:	Upflow/Horizontal	Blower/Motor Size:	Variable Speed ECM
NOx:	Natural Gas	Communication:	Communicating
Power Supply (V/Hz/Ph):	115/60/1	Temperature Rise Range High Fire (° F):	35-65
Min. Circuit Amps MCA (A):	14.4	Temperature Rise Range Low Fire (° F):	35-65
Max Overcurrent Protection (MOP) (A):	20.0	High Fire Input Capacity :	100000
AFUE :	96	High Fire Output Capacity :	96100
Vent Diameter (In):	2;3	Low Fire Input Capacity :	70000
Net Weight (lb):	-	Low fire output Capacity :	67270
Gross Weight (lb):	144	Dimensions (HxWxD) (in):	34-1/2 x 21 x 29
Power Voltage (lb):	115	Current Type :	AC
Power Phase:	1	Power Frequency :	60
Min Voltage :	-	Max Voltage :	-
MCA :	14.4	MOP :	20.0
Electric Heat Range :	-	Indoor Blower FLA :	-
Fan Motor Output :	-	Outdoor Fan LRA :	-



At Goodman, we believe in American dependability. Units are designed, engineered and assembled in the U.S.A.



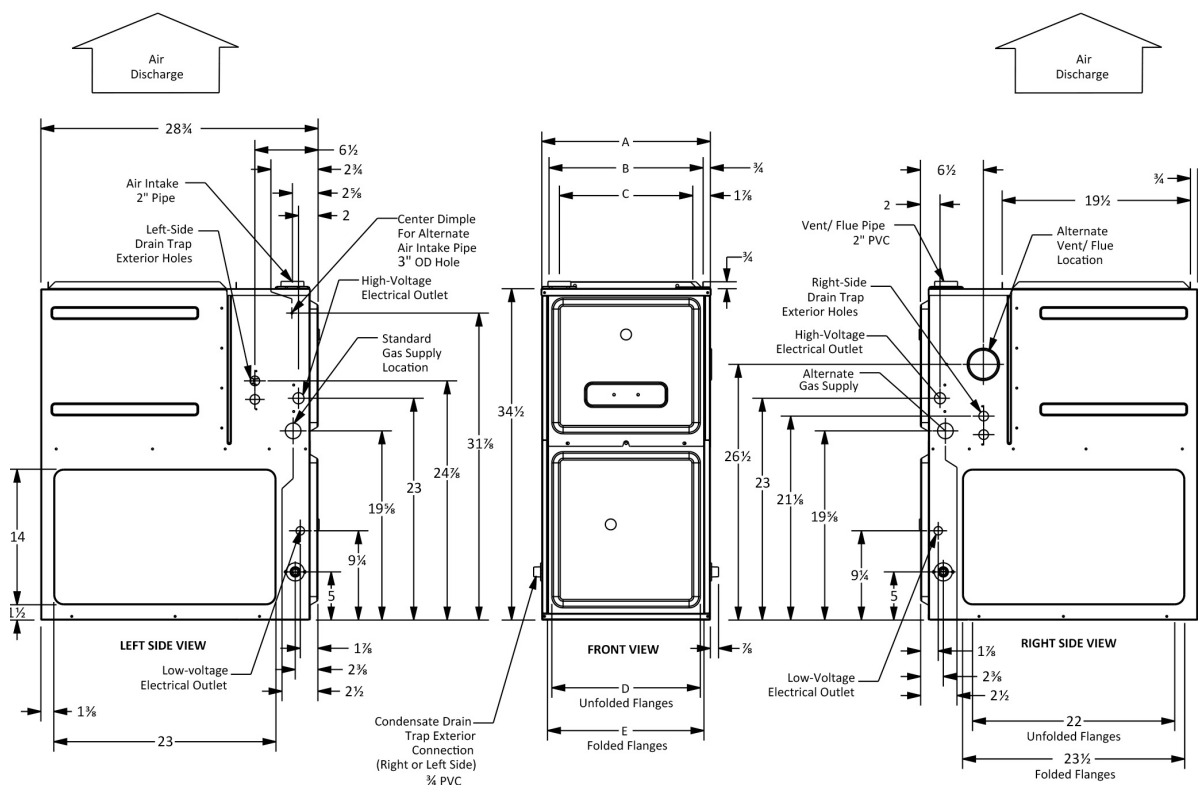
Submittal Data Sheet

15.0 SEER2, Air Conditioner System, 3.0 Ton, Outdoor Unit-GSXN403610A*

Submitted By : Goodman/Amana Unitary Test System

Submitted To : N/A

Tags : AHRI 208799871 Products [GSXN403610A* , CAPTA4230*4A* , GMVC961005CNB*] , SEER2 15.0 , EER2 11.7



At Goodman, we believe in American dependability. Units are designed, engineered and assembled in the U.S.A.

