

PEAD-A18AA8 MID STATIC HORIZONTAL-DUCTED INDOOR UNIT



Job Name:

System Reference:

Date:



GENERAL FEATURES

- Unobtrusive ceiling-concealed design for short-run ductwork
- Wide ranging external static pressure (0.14-0.60 in. WG)
- Built-in condensate lift mechanism (up to 27-9/16")
- Auto fan speed mode
- Optional FB Series filter boxes for easy access and service
- Ideal for residential homes, retail shopping centers, larger classrooms, office complexes, conference rooms, ballrooms, fitness centers, and more
- Multiple control options available:
 - kumo cloud® smart device app for remote access
 - Third-party interface options
 - Wired or wireless controllers

| Specifications | | | System |
|---------------------------------|---|---------------------|--|
| Unit Type | | | PEAD-A18AA8 |
| Cooling Capacity ^{1,3} | | BTU/H | 18,000 |
| Heating Capacity ^{2,3} | | BTU/H | 19,000 |
| Electrical | Voltage, Phase, Frequency | | 208/230, 1, 60 |
| | Guaranteed Voltage Range | V AC | 198- 253V |
| | Voltage: Indoor - Outdoor, S1-S2 | V AC | 208/230 |
| | Voltage: Indoor - Outdoor, S2-S3 | V DC | 24 |
| | Short-circuit Current Rating [SCCR] | kA | 5 |
| Indoor Unit | MCA | A | 2.44 |
| | Fan Motor Full Load Amperage | A | 1.95 |
| | Fan Motor Output | W | 121 |
| | Airflow Rate at Cooling, Dry | CFM | 424-512-600 |
| | Airflow Rate at Cooling, Wet | CFM | 382-461-540 |
| | Airflow Rate at Heating, Dry | CFM | 424-512-600 |
| | Sound Pressure Level [Cooling] | dB[A] | 29-34-37 |
| | Sound Pressure Level [Heating] | dB[A] | 29-34-37 |
| | External Static Pressure | in.WG | 0.14-0.2-0.28-0.4-0.6 |
| | Drain Pipe Size | In. [mm] | 1-1/4 [32] |
| | Condensate Lift Mechanism, Maximum Distance | In. [mm] | 27-9/16 [700] |
| | Coating on Heat Exchanger | | — |
| | External Finish Color | | Galvanized |
| | Unit Dimensions | W x D x H: In. [mm] | 35-7/16 x 28-7/8 x 9-7/8 [900 x 732 x 250] |
| | Package Dimensions | W x D x H: In. [mm] | 46-1/16 x 35-7/16 x 13 [1,170 x 900 x 330] |
| Refrigerant | Unit Weight | Lbs. [kg] | 60 [27] |
| | Package Weight | Lbs. [kg] | 71 [32] |
| Piping | Type | | R410A |
| | Gas Pipe Size O.D. [Flared] | In.[mm] | 1/2 [12.7] |
| | Liquid Pipe Size O.D. [Flared] | In.[mm] | 1/4 [6.35] |

NOTES:

Conditions

¹Cooling (Indoor // Outdoor)

²Heating at 47°F (Indoor // Outdoor)

°F

80 DB, 67 WB // 95 DB, 75 WB

°F

70 DB, 60 WB // 47 DB, 43 WB

³Capacity varies based on the number of indoor units operating and the model of the Multi-zone Outdoor Unit. For reference to connected capacity charts, please refer Multi-zone Outdoor Unit Operational Performance.

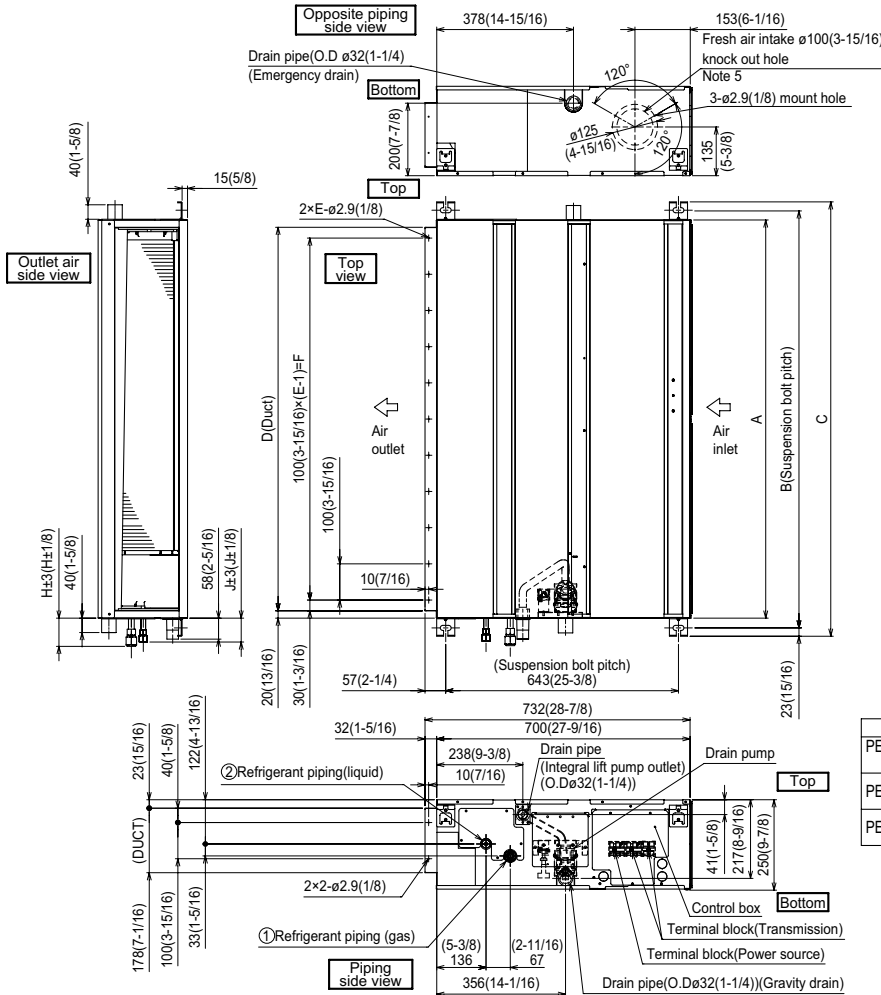
INDOOR UNIT ACCESSORIES: PEAD-A18AA8

| | | |
|----------------------------|---|-------------------|
| Control Interface | 3-Pin Connector | PAC-715AD |
| | BACnet® and Modbus® Interface | PAC-UKPRC001-CN-1 |
| | CN24 Relay Kit | CN24RELAY-KIT-CM3 |
| | IT Extender | PAC-WHS01IE-E |
| | kumo station® for kumo cloud® | PAC-WHS01HC-E |
| | Lockdown bracket for remote controller | RCMKP1CB |
| | Remote Operation Adapter† | PAC-SF40RM-E |
| | Thermostat Interface | PAC-US444CN-1 |
| | Thermostat Interface | PAC-US445CN-1 |
| | USNAP Adapter | PAC-WHS01UP-E |
| | Wireless Interface for kumo cloud® | PAC-USWHS002-WF-2 |
| Remote Sensor | Flush Mount Remote Temperature Sensor | PAC-USSEN002-FM-1 |
| | Flush Mount Temperature Sensor | PAC-USSEN001-FM-1 |
| | Remote Temperature Sensor | PAC-SE41TS-E |
| | Wireless temperature and humidity sensor for kumo cloud® | PAC-USWHS003-TH-1 |
| Wired Remote Controller | Airzone ZBS Wired Blueface Principal Controller White | AZZBSBLUEFACECB |
| | Airzone ZBS Wired Lite Controller White | AZZBSLITECB |
| | Airzone ZBS Wired Think Controller White | AZZBSTHINKCB |
| | Airzone ZBS Wireless Lite Controller White | AZZBSLITERB |
| | Airzone ZBS Wireless Think Controller White | AZZBSTHINKRB |
| | Deluxe Wired MA Remote Controller† | PAR-40MAAU |
| | Simple MA Remote Controller† | PAC-YT53CRAU-J |
| | Touch MA Controller† | PAR-CT01MAU-SB |
| Wireless Remote Controller | kumo touch™ RedLINK™ Wireless Controller | MHK2 |
| | Wireless MA Receiver | PAR-FA32MA-W |
| | Wireless MA Remote Controller | PAR-FL32MA-E |
| Condensate | Blue Diamond (Advanced) Mini Condensate Pump w/ Reservoir & Sensor (208/230V) [recommended] | X87-721 |
| | Blue Diamond (MegaBlue Advanced) Condensate Pump w/ Reservoir & Sensor | X87-835 |
| | Blue Diamond Sensor Extension Cable — 15 Ft. | C13-103 |
| | Refco Condensate Pump (100-240 VAC) up to 120,000 BTU/H | COMBI |
| Control Wire | 20/2PR, 1PR shielded + 1PR plenum wire for Airzone, 100 ft reel | CW2042S2-100 |
| | 20/2PR, shielded + 1PR plenum wire for Airzone, 500 ft reel | CW2042S2-500 |
| Disconnect Switch | (30A/600V/UL) [fits 2" X 4" utility box] - Black | TAZ-MS303 |
| | (30A/600V/UL) [fits 2" X 4" utility box] - White | TAZ-MS303W |
| Filter Box | Filter Box with MERV 13 Filter | FBM2-2-A |
| Lineset | 100' x 1/4" x 100' / 1/2" Lineset (Twin-Tube Insulation) | MLS141212T-100 |
| | 15' x 1/4" x 15' / 1/2" Lineset (Twin-Tube Insulation) | MLS141212T-15 |
| | 30' x 1/4" x 30' / 1/2" Lineset (Twin-Tube Insulation) | MLS141212T-30 |
| | 50' x 1/4" x 50' / 1/2" Lineset (Twin-Tube Insulation) | MLS141212T-50 |
| | 65' x 1/4" x 65' / 1/2" Lineset (Twin-Tube Insulation) | MLS141212T-65 |

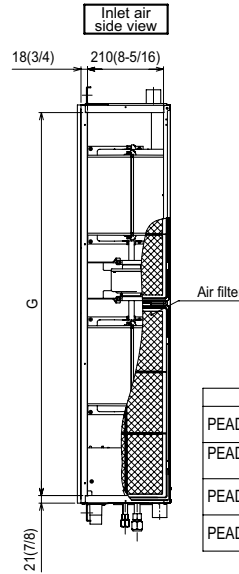
NOTES:

†PAC-SF40RM-E (Unable to use with wireless remote controller)

INDOOR UNIT DIMENSIONS: PEAD-A18AA8



- Notes
1. Use an M10 screw for the suspension bolt (field supply).
 2. Keep the service space for maintenance at the bottom.
 3. This drawing is for PEAD-A09-12-15-18-24-30AA8 models, which have 2 fans. PEAD-A36AA8 model has 3 fans.
 4. If the inlet duct is used, remove the air filter (supplied with the unit), then install the filter (field supply) at the suction side.
 5. Heat air to 0°C (32°F) or higher when taking fresh air with a fresh air intake.



Unit:mm(in.)

| Model | J | ①Gas pipe | ②Liquid pipe |
|-------------------|---------------|-----------------|----------------|
| PEAD-A09AA8 | 62 (2-1/2) | ø9.52 (3/8) | ø6.35 (1/4) |
| PEAD-A12,15,18AA8 | 62 (2-1/2) | ø12.7 (1/2) | ø6.35 (1/4) |
| PEAD-A24,30AA8 | 66 (2-5/8) | ø15.88 (5/8) | ø9.52 (3/8) |

Unit:mm(in.)

| Model | A | B | C | D | E | F | G | H |
|----------------------|-------------------|-------------------|-------------------|-------------------|----|-------------------|--------------------|---------------|
| PEAD-A09,12,15,18AA8 | 900 (35-7/16) | 954 (37-9/16) | 1000 (39-3/8) | 860 (33-7/8) | 9 | 800 (31-1/2) | 858 (33-13/16) | 72 (2-7/8) |
| PEAD-A24,30AA8 | 1100 (43-5/16) | 1154 (45-7/16) | 1200 (47-1/4) | 1060 (41-3/4) | 11 | 1000 (39-3/8) | 1058 (41-11/16) | 78 (3-1/8) |
| PEAD-A36AA8 | 1400 (55-1/8) | 1454 (57-1/4) | 1500 (59-1/16) | 1360 (53-9/16) | 14 | 1300 (51-3/16) | 1358 (53-1/2) | |

1340 Satellite Boulevard Suwanee, GA 30024
Toll Free: 800-433-4822 www.mehvac.com



FORM# PEAD-A18AA8 - 202211