

MSZ-EF09NAB-U2

9,000 BTU/H BLACK DESIGNER WALL MOUNT



Job Name:

System Reference:

Date:



GENERAL FEATURES

- Modern, sleek design
- For use with MXZ multi-zone units only
- Multiple control options available:
 - Back-lit screen handheld remote controller (provided with unit)
 - kumo cloud® smart device app for remote access
 - Third-party interface options
 - Wired or wireless controllers

| Specifications | | | System |
|---------------------------------|-------------------------------------|---------------------|---|
| Unit Type | | | MSZ-EF09NAB-U2 |
| Cooling Capacity ^{1,3} | | BTU/H | 9,000 |
| Heating Capacity ^{2,3} | | BTU/H | 10,000 |
| Electrical | Voltage, Phase, Frequency | | 208/230, 1, 60 |
| | Guaranteed Voltage Range | V AC | 187- 253V |
| | Voltage: Indoor - Outdoor, S1-S2 | V AC | 208/230 |
| | Voltage: Indoor - Outdoor, S2-S3 | V DC | 24 |
| | Short-circuit Current Rating [SCCR] | kA | 5 |
| Indoor Unit | MCA | A | 1.0 |
| | Fan Motor Full Load Amperage | A | 0.67 |
| | Airflow Rate at Cooling, Dry | CFM | 141–162–222–293–371 |
| | Airflow Rate at Cooling, Wet | CFM | 121–140–191–252–319 |
| | Airflow Rate at Heating, Dry | CFM | 141–162–219–314–420 |
| | Sound Pressure Level [Cooling] | dB[A] | 21–23–29–36–42 |
| | Sound Pressure Level [Heating] | dB[A] | 21–24–29–37–45 |
| | Drain Pipe Size | In. [mm] | 5/8 [15.88] |
| | Coating on Heat Exchanger | | — |
| | External Finish Color | | Munsell 3.7PB 2.0/0.1 |
| | Unit Dimensions | W x D x H: In. [mm] | 34-13/16 x 7-11/16 x 11-3/4 [884 x 195 x 299] |
| | Package Dimensions | W x D x H: In. [mm] | 38-3/4 x 10-3/4 x 14-1/4 [884 x 273 x 362] |
| | Unit Weight | Lbs. [kg] | 26 [11.8] |
| | Package Weight | Lbs. [kg] | 29 [13] |
| Refrigerant | Type | | R410A |
| Piping | Gas Pipe Size O.D. [Flared] | In.[mm] | 3/8 [9.52] |
| | Liquid Pipe Size O.D. [Flared] | In.[mm] | 1/4 [6.35] |

NOTES:

Conditions

¹Cooling (Indoor // Outdoor)

°F 80 DB, 67 WB // 95 DB, 75 WB

²Heating at 47°F (Indoor // Outdoor)

°F 70 DB, 60 WB // 47 DB, 43 WB

³Capacity varies based on the number of indoor units operating and the model of the Multi-zone Outdoor Unit. For reference to connected capacity charts, please refer Multi-zone Outdoor Unit Operational Performance.:

INDOOR UNIT ACCESSORIES: MSZ-EF09NAB-U2

| | | |
|----------------------------|---|-------------------|
| Control Interface | BACnet® and Modbus® Interface | PAC-UKPRC001-CN-1 |
| | IT Extender | PAC-WHS01IE-E |
| | kumo station® for kumo cloud® | PAC-WHS01HC-E |
| | Lockdown bracket for remote controller | RCMKP1CB |
| | System Control Interface | MAC-334IF-E |
| | Thermostat Interface | PAC-US444CN-1 |
| | Thermostat Interface | PAC-US445CN-1 |
| | USNAP Adapter | PAC-WHS01UP-E |
| Remote Sensor | Wired Remote Sensor | M21EAA307 |
| | Wireless temperature and humidity sensor for kumo cloud® | PAC-USWHS003-TH-1 |
| Wired Remote Controller | Deluxe Wired MA Remote Controller† | PAR-40MAAU |
| | Simple MA Remote Controller† | PAC-YT53CRAU-J |
| | Touch MA Controller† | PAR-CT01MAU-SB |
| Wireless Remote Controller | kumo touch™ RedLINK™ Wireless Controller | MHK2 |
| Condensate | Blue Diamond (Advanced) Mini Condensate Pump w/ Reservoir & Sensor (208/230V) [recommended] | X87-721 |
| | Blue Diamond (MicroBlue) Mini Condensate Pump (110/208/230V) up to 18,000 BTU/H | X86-003 |
| | Blue Diamond Alarm Extension Cable — 6.5 Ft. | C13-192 |
| | Blue Diamond MultiTank — collection tank for use with multiple pumps | C21-014 |
| | Blue Diamond Sensor Extension Cable — 15 Ft. | C13-103 |
| | Drain Pan Level Sensor/Control | SS610E |
| | Refco Condensate Pump (100-240 VAC) up to 120,000 BTU/H | COMBI |
| | Refco Condensate Pump (100-240 VAC) up to 120,000 BTU/H | GOBI-II |
| | Sauermann Condensate Pump | SI30-230 |
| Disconnect Switch | (30A/600V/UL) [fits 2" X 4" utility box] - White | TAZ-MS303W |
| Drain Hose | Flexible Mini-Split Drain Hose | DRX-16 |
| Lineset | 15' x 1/4" x 15' / 3/8" Lineset (Twin-Tube Insulation) | MLS143812T-15 |
| | 30' x 1/4" x 30' / 3/8" Lineset (Twin-Tube Insulation) | MLS143812T-30 |
| | 50' x 1/4" x 50' / 3/8" Lineset (Twin-Tube Insulation) | MLS143812T-50 |
| | 65' x 1/4" x 65' / 3/8" Lineset (Twin-Tube Insulation) | MLS143812T-65 |
| Soft Dry Cloth | Soft Dry Cloth | MAC-1001CL-E |

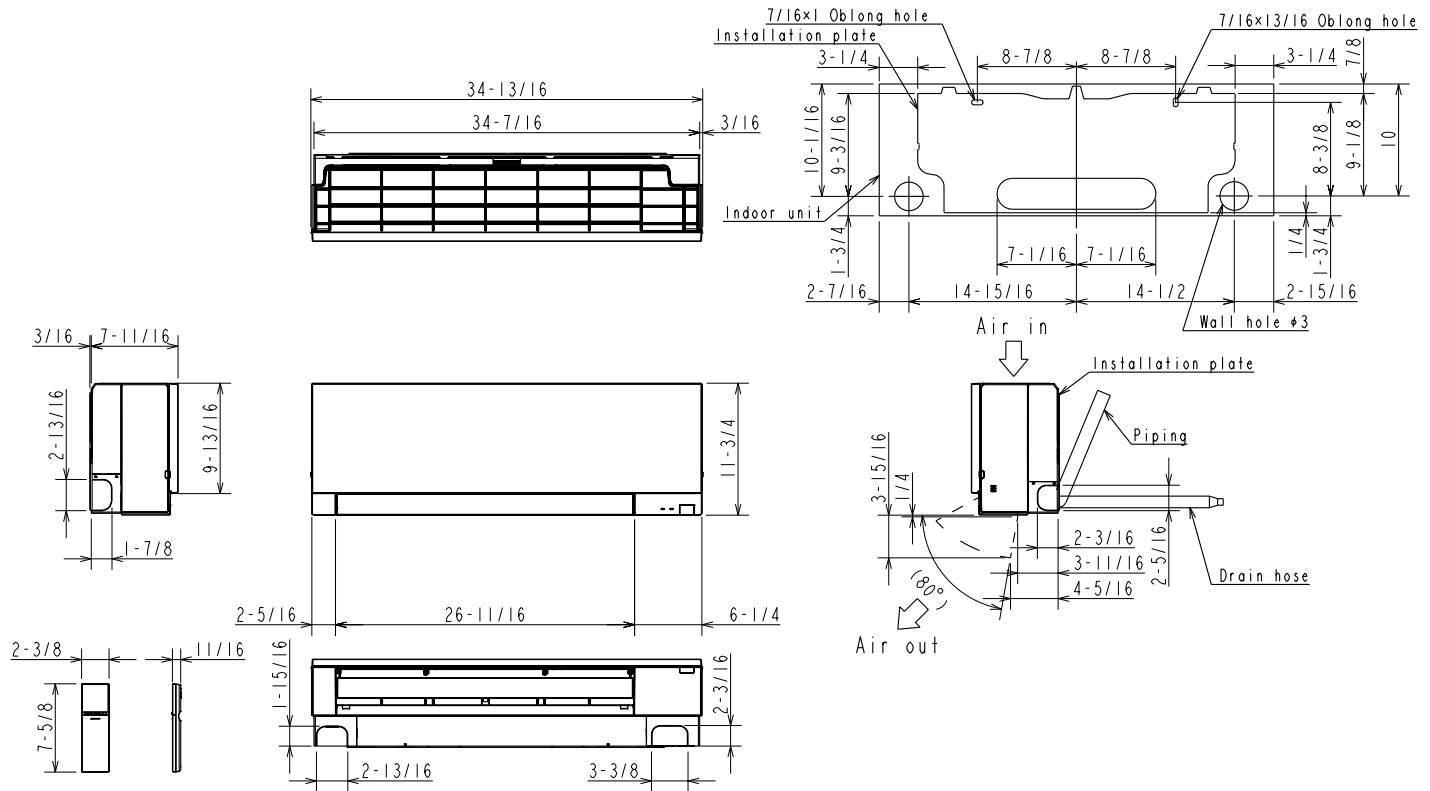
NOTES:

†Requires MAC-334IF-E

- M-Series EZ FIT® Recessed Ceiling Cassette, Floor-mount and Wall-mount
Allows indoor units to connect to an MA Controller:
Deluxe MA Remote Controller
Simple MA Controller
Touch MA Controller

INDOOR UNIT DIMENSIONS: MSZ-EF09NAB-U2

Unit: inch



MSZ-EF09/12NA

| | | |
|--------|-------------|--|
| Piping | Insulation | 1-7/16 O.D |
| | Liquid line | 1/4 - 19-11/16 (Flared connection 1/4) |
| | Gas line | 3/8 - 16-15/16 (Flared connection 3/8) |
| | Drain hose | Insulation 1-1/8 Connected part 5/8 O.D active length 15-3/8 |

Note: Extension pipe size refer to the specifications table.

MSZ-EF15/18NA

| | | |
|--------|-------------|--|
| Piping | Insulation | 1-7/16 O.D |
| | Liquid line | 1/4 - 19-11/16 (Flared connection 1/4) |
| | Gas line | 3/8 - 16-15/16 (Flared connection 1/2) |
| | Drain hose | Insulation 1-1/8 Connected part 5/8 O.D active length 15-3/8 |

Note: Extension pipe size refer to the specifications table.