

Submittal Data Sheet

14.3 SEER2, Air Conditioner System, 2.0 Ton, Outdoor Unit-GSXN402410A*

Submitted By : Goodman/Amana Unitary Test System

Submitted To : N/A

Tags : AHRI 209322021 Products [GSXN402410A* , CA*FA2422*6B*+TXV, GC9S960603BNA*] , SEER2 14.3 , EER2 11.7

STANDARD FEATURES:

- Energy-efficient compressor
- Copper tube/enahnced aluminum fin coil-5mm diameter on 1.5-4.0 Ton
- Factory-installed filter drier
- Fully charged for 15' of tubing length
- Service valvess with sweat connections and easy-to-access guage ports
- Contactor with lug connection
- Ground lug connection
- AHRI Certified
- ETL Tested

Data Missing

CABINET FEATURES:

- Removable grille-style top design
compliant with UL 60335-2-40
- Venturi for increased velocity of airflow
- Heavy-gauge galvanized-steel cabinet
- Attractive Architectural Gray powder-paint
finish with 500-hour salt-spray approval
- Steel louver coil guard
- Rust-resistant coated screws
- Single-panel access to controls with space
provided for field-installed accessories
- When properly anchored, meets the 2020 Florida
Building Code unit integrity requirements for
hurricane-type winds (Anchor bracket kits available.)



At Goodman, we believe in American dependability. Units are designed, engineered and assembled in the U.S.A.



Submittal Data Sheet

14.3 SEER2, Air Conditioner System, 2.0 Ton, Outdoor Unit-GSXN402410A*

Submitted By : Goodman/Amana Unitary Test System

Submitted To : N/A

Tags : AHRI 209322021 Products [GSXN402410A* , CA*FA2422*6B*+TXV, GC9S960603BNA*] , SEER2 14.3 , EER2 11.7

SYSTEM PERFORMANCE

Outdoor Unit Model No.:	GSXN402410A*	Description :	14.3 SEER2, Air Conditioner System, 2.0 Ton Outdoor System
Indoor Unit Model No.:	CAPFA2422B6B*		
TXV/PISTON :	TX2N4A		
Furnace Unit Model No.:	GC9S960603BN		
Rated Cooling Conditions:	Outdoor (°F DB/WB):N/A/N/A Indoor (°F DB/WB):N/A/N/A	Rated Heating Conditions:	Outdoor (°F DB/WB):N/A/N/A Indoor (°F DB/WB):N/A/N/A
Rated Cooling Capacity (Btu/hr):	N/A	OD Rated Heating Capacity (Btu/hr)	N/A
EER2:	11.7	EER:	N/A
Heating COP:	N/A	SEER2:	14.3
SEER:	N/A	AFUE:	96

OUTDOOR UNIT DETAILS : GSXN402410A*

Power Supply (V/Hz/Ph):	208/230/60/1	Compressor Type:	Rotary
Min. Circuit Amps MCA (A):	13.8	Compressor Stages:	Single Stage
Quantity:	1	Max Overcurrent Protection (MOP) (A):	15
Suction Valve Connection Size (in):	3/8	Compressor Rated Load Amps :	8.4
Liquid Valve Connection Size (in):	3/4	Refrigerant Type:	-
Sound Power(High/Med/Low) (dBA):	72.0 / - / -	Holding Refrigerant Charge (oz):	71
Cooling Operation Range (°F DB):	- - -	Additional Charge (oz/ft):	-
Heating Operation Range (°F DB):	N/A	Pre-charge Piping (Length) (ft):	-
Net Weight (lb):	138	Dimensions (HxWxD) (in):	32.5 x 26 x 26
Gross Weight (lb):	142	*Max. Pipe Length (Vertical) (ft):	-
*Max. Pipe Length (Total) (ft):	-		

**Refer to Long Line Set Application TP-107 for lines greater than 80 ft. or vertical elevation changes more than 50 ft. for single stage equipment and 25 ft. for 2-stage equipment.*



At Goodman, we believe in American dependability. Units are designed, engineered and assembled in the U.S.A.



Submittal Data Sheet

14.3 SEER2, Air Conditioner System, 2.0 Ton, Outdoor Unit-GSXN402410A*

Submitted By : Goodman/Amana Unitary Test System

Submitted To : N/A

Tags : AHRI 209322021 Products [GSXN402410A* , CA*FA2422*6B*+TXV, GC9S960603BNA*] , SEER2 14.3 , EER2 11.7

**Outdoor (GSXN402410) Dimensional Drawing is
not available**



At Goodman, we believe in American dependability. Units are designed, engineered and assembled in the U.S.A.



Submittal Data Sheet

14.3 SEER2, Air Conditioner System, 2.0 Ton, Outdoor Unit-GSXN402410A*

Submitted By : Goodman/Amana Unitary Test System

Submitted To : N/A

Tags : AHRI 209322021 Products [GSXN402410A* , CA*FA2422*6B*+TXV, GC9S960603BNA*] , SEER2 14.3 , EER2 11.7

STANDARD FEATURES:

- Compact and lightweight all-aluminum evaporator coil with AlumaFin7™ technology
- Optimized for use with R-410A refrigerant
- Check flowrator for cooling applications
- Rust resistant, thermoplastic drain pans featuring a low water-retention design
- Foil-faced insulation covers the internal casing to reduce cabinet condensation
- Single-piece access panel with tight seal helps to keep conditioned air from escaping
- Seal tight customized suction and liquid grommets for easy installation and removal
- 21" depth for easier attic access
- Vertical application
- Galvanized, leather grain-embossed finish
- AHRI certified
- ETL listed

CABINET FEATURES:

- **DATA IS NOT AVAILABLE**



At Goodman, we believe in American dependability. Units are designed, engineered and assembled in the U.S.A.



Submittal Data Sheet

14.3 SEER2, Air Conditioner System,2.0 Ton, Outdoor Unit-GSXN402410A*

Submitted By : Goodman/Amana Unitary Test System

Submitted To : N/A

Tags : AHRI 209322021 Products [GSXN402410A* , CA*FA2422*6B*+TXV, GC9S960603BNA*] , SEER2 14.3 , EER2 11.7

INDOOR UNIT DETAILS : CAPFA2422B6B*

Quantity:	1	Configuration:	
Cased VS Uncased:	Cased	Dimensions (HxWxD) (in) :	22 x 17.5 x 21
Suction Connection Size (in) :	3/4	Net Weight (lb):	40
Liquid Connection Size (in) :	3/8	Gross Weight (lb):	43
Condensate Connection (in) :	3/4	Power Voltage (lb):	-
Current Type :	-	Power Phase:	-
Power Frequency :	-	Min Voltage :	-
Max Voltage :	-	MCA :	-
MOP :	-	Electric Heat Range :	-
Indoor Blower FLA :	-	Fan Motor Output :	-



At Goodman, we believe in American dependability. Units are designed, engineered and assembled in the U.S.A.



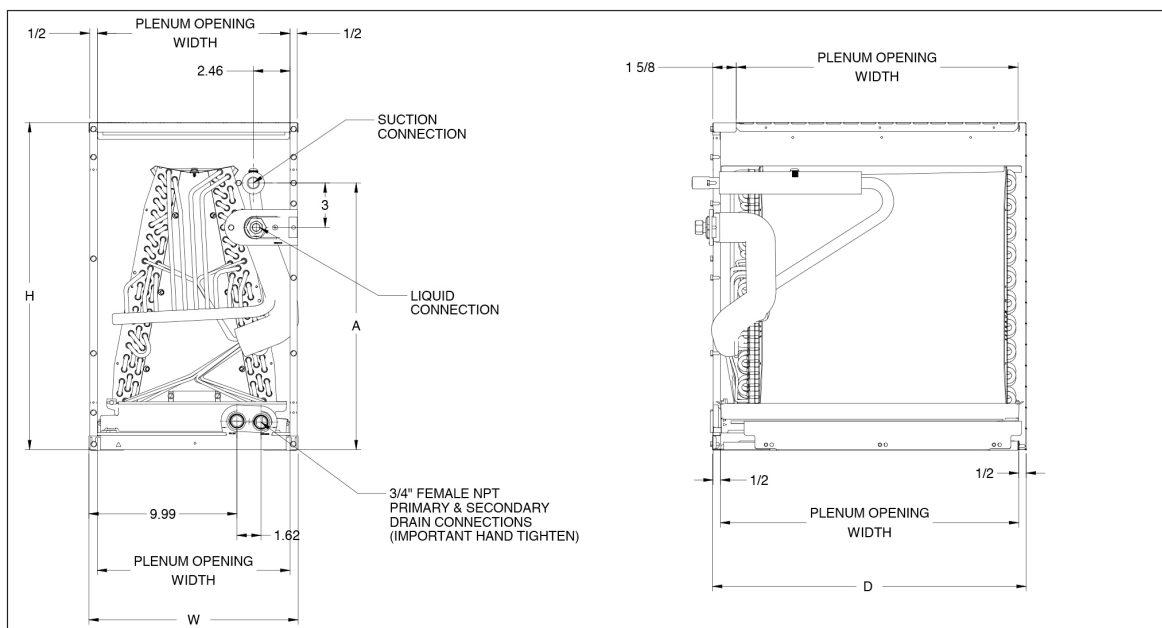
Submittal Data Sheet

14.3 SEER2, Air Conditioner System, 2.0 Ton, Outdoor Unit-GSXN402410A*

Submitted By : Goodman/Amana Unitary Test System

Submitted To : N/A

Tags : AHRI 209322021 Products [GSXN402410A* , CA*FA2422*6B*+TXV, GC9S960603BNA*] , SEER2 14.3 , EER2 11.7



At Goodman, we believe in American dependability. Units are designed, engineered and assembled in the U.S.A.



Submittal Data Sheet

14.3 SEER2, Air Conditioner System, 2.0 Ton, Outdoor Unit-GSXN402410A*

Submitted By : Goodman/Amana Unitary Test System

Submitted To : N/A

Tags : AHRI 209322021 Products [GSXN402410A* , CA*FA2422*6B*+TXV, GC9S960603BNA*] , SEER2 14.3 , EER2 11.7

STANDARD FEATURES:

- Heavy-duty aluminized-steel tubular heat exchanger
- Stainless-steel secondary heat exchanger
- Single-stage gas valve
- Durable Silicon Nitride igniter
- Quiet single-speed induced draft blower
- Self-diagnostic control board with constant memory fault code history output to a LED
- All models comply with California 40 ng/J Low NOx emissions standard
- Can no longer be installed in California's South Coast Air Quality Management District (SCAQMD) on or after October 1, 2019
- AHRI Certified
- ETL Listed

CABINET FEATURES:

- DATA IS NOT AVAILABLE



At Goodman, we believe in American dependability. Units are designed, engineered and assembled in the U.S.A.



Submittal Data Sheet

14.3 SEER2, Air Conditioner System,2.0 Ton, Outdoor Unit-GSXN402410A*

Submitted By : Goodman/Amana Unitary Test System

Submitted To : N/A

Tags : AHRI 209322021 Products [GSXN402410A* , CA*FA2422*6B*+TXV, GC9S960603BNA*] , SEER2 14.3 , EER2 11.7

INDOOR FURNACE UNIT DETAILS : GC9S960603BNA*

Configuration:	Downflow/Horizontal	Blower/Motor Size:	Multi Speed ECM
NOx:	Natural Gas	Communication:	Non-Communicating
Power Supply (V/Hz/Ph):	115/60/1	Temperature Rise Range High Fire (° F):	35-65
Min. Circuit Amps MCA (A):	10.3	Temperature Rise Range Low Fire (° F):	-
Max Overcurrent Protection (MOP) (A):	15.0	High Fire Input Capacity :	60000
AFUE :	96	High Fire Output Capacity :	57660
Vent Diameter (In):	-	Low Fire Input Capacity :	-
Net Weight (lb):	116	Low fire output Capacity :	-
Gross Weight (lb):	121	Dimensions (HxWxD) (in):	33-3/8 x 17-1/2 x 28
Power Voltage (lb):	115	Current Type :	-
Power Phase:	1	Power Frequency :	60
Min Voltage :	-	Max Voltage :	-
MCA :	10.3	MOP :	15.0
Electric Heat Range :	-	Indoor Blower FLA :	-
Fan Motor Output :	-	Outdoor Fan LRA :	-



At Goodman, we believe in American dependability. Units are designed, engineered and assembled in the U.S.A.



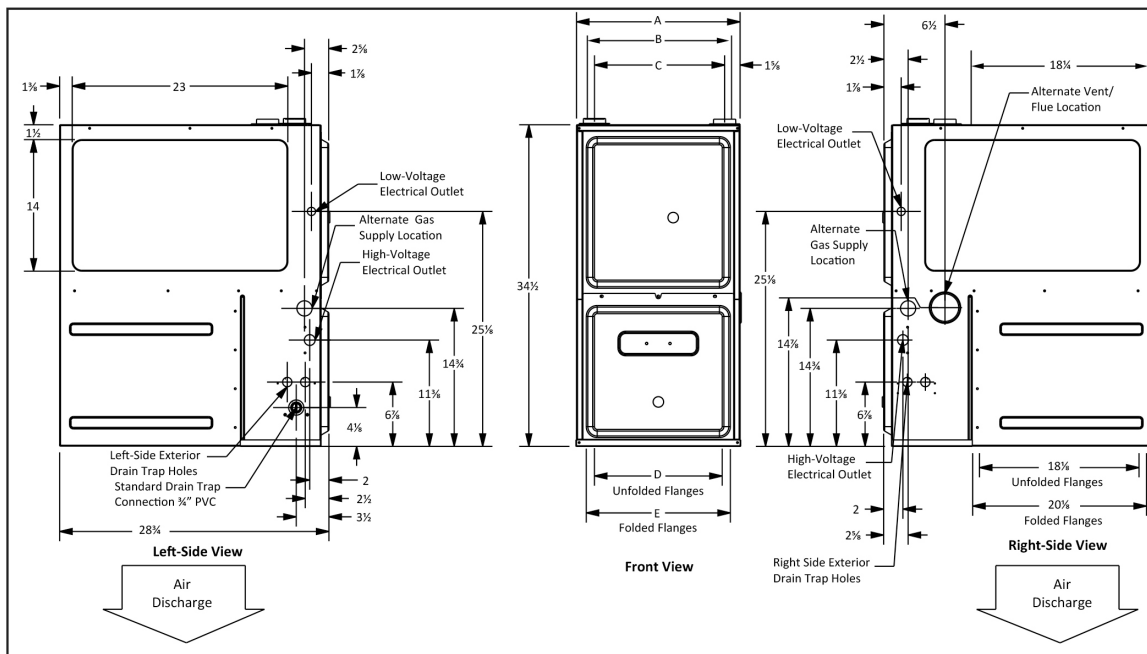
Submittal Data Sheet

14.3 SEER2, Air Conditioner System, 2.0 Ton, Outdoor Unit-GSXN402410A*

Submitted By : Goodman/Amana Unitary Test System

Submitted To : N/A

Tags : AHRI 209322021 Products [GSXN402410A* , CA*FA2422*6B*+TXV, GC9S960603BNA*] , SEER2 14.3 , EER2 11.7



MODEL	A	B	C	D	E
GC9S960403BN	17 1/2"	16"	13 3/8"	12 1/8"	13 3/8"
GC9S960603BNA	17 1/2"	16"	13 3/8"	12 1/8"	13 3/8"
GC9S960804CN	21"	19 1/2"	17 3/8"	16"	17 1/2"
GC9S961005CN	21"	19 1/2"	17 3/8"	16"	17 1/2"
GC9S961205DN	24 1/2"	23"	20 7/8"	19 3/8"	20 7/8"

MINIMUM CLEARANCES TO COMBUSTIBLE MATERIALS

POSITION	SIDES	REAR	FRONT	BOTTOM	FLUE	TOP
Downflow	0"	0"	3"	NC	0"	1"
Horizontal	6"	0"	3"	C	0"	6"

C = If placed on combustible floor, the floor MUST be wood ONLY.

NC = For installation on non-combustible floors only. A combustible floor sub-base must be used for installations on combustible flooring.



At Goodman, we believe in American dependability. Units are designed, engineered and assembled in the U.S.A.

