

Submittal Data Sheet

14.3 SEER2, Air Conditioner System, 4.0 Ton, Outdoor Unit-GSXN404810A*

Submitted By : Goodman/Amana Unitary Test System

Submitted To : N/A

Tags : AHRI 209322357 Products [GSXN404810A* , CA*F4961*6D*+TXV, GM9S801005CNA*], SEER2 14.3 , EER2 11.7

STANDARD FEATURES:

- Energy-efficient compressor
- Copper tube/enhanced aluminum fin coil-5mm diameter on 1.5-4.0 Ton
- Factory-installed filter drier
- Fully charged for 15' of tubing length
- Service valves with sweat connections and easy-to-access gauge ports
- Contactor with lug connection
- Ground lug connection
- AHRI Certified
- ETL Tested

Data Missing

CABINET FEATURES:

- Removable grille-style top design
compliant with UL 60335-2-40
- Venturi for increased velocity of airflow
- Heavy-gauge galvanized-steel cabinet
- Attractive Architectural Gray powder-paint
finish with 500-hour salt-spray approval
- Steel louver coil guard
- Rust-resistant coated screws
- Single-panel access to controls with space
provided for field-installed accessories
- When properly anchored, meets the 2020 Florida
Building Code unit integrity requirements for
hurricane-type winds (Anchor bracket kits available.)



At Goodman, we believe in American dependability. Units are designed, engineered and assembled in the U.S.A.



Submittal Data Sheet

14.3 SEER2, Air Conditioner System, 4.0 Ton, Outdoor Unit-GSXN404810A*

Submitted By : Goodman/Amana Unitary Test System

Submitted To : N/A

Tags : AHRI 209322357 Products [GSXN404810A* , CA*F4961*6D*+TXV, GM9S801005CNA*], SEER2 14.3 , EER2 11.7

SYSTEM PERFORMANCE

Outdoor Unit Model No.:	GSXN404810A*	Description :	14.3 SEER2, Air Conditioner System, 4.0 Ton Outdoor System
Indoor Unit Model No.:	CAPF4961C6D*		
TXV/PISTON :	TX5N4		
Furnace Unit Model No.:	GM9S801005CN		
Rated Cooling Conditions:	Outdoor (°F DB/WB):N/A/N/A Indoor (°F DB/WB):N/A/N/A	Rated Heating Conditions:	Outdoor (°F DB/WB):N/A/N/A Indoor (°F DB/WB):N/A/N/A
Rated Cooling Capacity (Btu/hr):	N/A	OD Rated Heating Capacity (Btu/hr)	N/A
EER2:	11.7	EER:	N/A
Heating COP:	N/A	SEER2:	14.3
SEER:	N/A	AFUE:	80

OUTDOOR UNIT DETAILS : GSXN404810A*

Power Supply (V/Hz/Ph):	208/230/60/1	Compressor Type:	-
Min. Circuit Amps MCA (A):	23.7	Compressor Stages:	-
Max Overcurrent Protection (MOP) (A):	45	Suction Valve Connection Size (in):	-
Compressor Rated Load Amps :	19.9	Liquid Valve Connection Size (in):	-
Refrigerant Type:	-	Sound Power(High/Med/Low) (dBA):	- / - / -
Holding Refrigerant Charge (oz):	120.6	Cooling Operation Range (°F DB):	- - -
Additional Charge (oz/ft):	-	Heating Operation Range (°F DB):	N/A
Pre-charge Piping (Length) (ft):	-	Net Weight (lb):	248
Dimensions (HxWxD) (in):	39.5 x 35.5 x 35.5	Gross Weight (lb):	249
*Max. Pipe Length (Vertical) (ft):	-	*Max. Pipe Length (Total) (ft):	-

**Refer to Long Line Set Application TP-107 for lines greater than 80 ft. or vertical elevation changes more than 50 ft. for single stage equipment and 25 ft. for 2-stage equipment.*



At Goodman, we believe in American dependability. Units are designed, engineered and assembled in the U.S.A.



Submittal Data Sheet

14.3 SEER2, Air Conditioner System, 4.0 Ton, Outdoor Unit-GSXN404810A*

Submitted By : Goodman/Amana Unitary Test System

Submitted To : N/A

Tags : AHRI 209322357 Products [GSXN404810A* , CA*F4961*6D*+TXV, GM9S801005CNA*], SEER2 14.3 , EER2 11.7

Outdoor (GSXN404810) Dimensional Drawing is not available



At Goodman, we believe in American dependability. Units are designed, engineered and assembled in the U.S.A.



Submittal Data Sheet

14.3 SEER2, Air Conditioner System, 4.0 Ton, Outdoor Unit-GSXN404810A*

Submitted By : Goodman/Amana Unitary Test System

Submitted To : N/A

Tags : AHRI 209322357 Products [GSXN404810A* , CA*F4961*6D*+TXV, GM9S801005CNA*], SEER2 14.3 , EER2 11.7

STANDARD FEATURES:

- All-Aluminum evaporator coil
- Optimized for use with R-410A refrigerant
- Check flowrator for cooling and heat pump applications
- Vertical application
- 21" depth for easier attic access
- Galvanized, leather grain-embossed finish
- Rust resistant, thermoplastic drain pans featuring a low water-retention design
- AHRI certified
- ETL Listed

CABINET FEATURES:

- Twenty one inch depth for easier attic access
- Split seam front for easy access
- Foil-faced insulation covers the internal casing to reduce cabinet condensation
- Galvanized, leather grain-embossed finish



At Goodman, we believe in American dependability. Units are designed, engineered and assembled in the U.S.A.



Submittal Data Sheet

14.3 SEER2, Air Conditioner System,4.0 Ton, Outdoor Unit-GSXN404810A*

Submitted By : Goodman/Amana Unitary Test System

Submitted To : N/A

Tags : AHRI 209322357 Products [GSXN404810A* , CA*F4961*6D*+TXV, GM9S801005CNA*] , SEER2 14.3 , EER2 11.7

INDOOR UNIT DETAILS : CAPF4961C6D*

Dimensions (HxWxD) (in) :	30 x 21 x 21	Suction Connection Size (in) :	7/8
Net Weight (lb):	73	Liquid Connection Size (in) :	3/8
Gross Weight (lb):	75	Condensate Connection (in) :	3/4
Power Voltage (lb):	-	Current Type :	-
Power Phase:	-	Power Frequency :	-
Min Voltage :	-	Max Voltage :	-
MCA :	-	MOP :	-
Electric Heat Range :	-	Indoor Blower FLA :	-
Fan Motor Output :	-	Outdoor Fan LRA :	-



At Goodman, we believe in American dependability. Units are designed, engineered and assembled in the U.S.A.



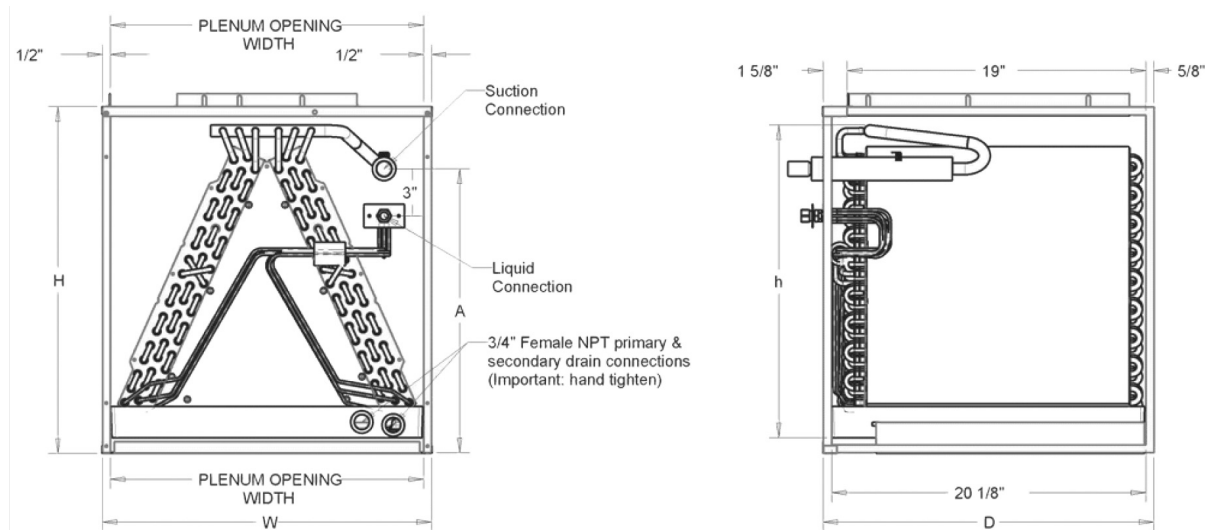
Submittal Data Sheet

14.3 SEER2, Air Conditioner System, 4.0 Ton, Outdoor Unit-GSXN404810A*

Submitted By : Goodman/Amana Unitary Test System

Submitted To : N/A

Tags : AHRI 209322357 Products [GSXN404810A* , CA*F4961*6D*+TXV, GM9S801005CNA*], SEER2 14.3 , EER2 11.7



At Goodman, we believe in American dependability. Units are designed, engineered and assembled in the U.S.A.



Submittal Data Sheet

14.3 SEER2, Air Conditioner System, 4.0 Ton, Outdoor Unit-GSXN404810A*

Submitted By : Goodman/Amana Unitary Test System

Submitted To : N/A

Tags : AHRI 209322357 Products [GSXN404810A* , CA*F4961*6D*+TXV, GM9S801005CNA*], SEER2 14.3 , EER2 11.7

STANDARD FEATURES:

- Heavy-duty aluminized-steel tubular heat exchanger
- "Silicon Nitride igniter"
- Color-coded low-voltage terminals
- Multi-speed ECM blower motor with continuous fan speed
- Fault code LED Output
- Single-Stage gas Valve
- Single-speed inducer draft blower

CABINET FEATURES:

- DATA IS NOT AVAILABLE



At Goodman, we believe in American dependability. Units are designed, engineered and assembled in the U.S.A.



Submittal Data Sheet

14.3 SEER2, Air Conditioner System,4.0 Ton, Outdoor Unit-GSXN404810A*

Submitted By : Goodman/Amana Unitary Test System

Submitted To : N/A

Tags : AHRI 209322357 Products [GSXN404810A* , CA*F4961*6D*+TXV, GM9S801005CNA*] , SEER2 14.3 , EER2 11.7

INDOOR FURNACE UNIT DETAILS : GM9S801005CNA*

Power Supply (V/Hz/Ph):	115/60/1	Temperature Rise Range High Fire (° F):	35-65
Min. Circuit Amps MCA (A):	12.45	Temperature Rise Range Low Fire (° F):	-
Max Overcurrent Protection (MOP) (A):	15	High Fire Input Capacity :	100000
AFUE :	80	High Fire Output Capacity :	80,000
Vent Diameter (In):	4	Low Fire Input Capacity :	-
Net Weight (lb):	132	Low fire output Capacity :	-
Gross Weight (lb):	116	Dimensions (HxWxD) (in):	33-3/8 x 21 x 28
Power Voltage (lb):	115	Current Type :	-
Power Phase:	1	Power Frequency :	60
Min Voltage :	-	Max Voltage :	-
MCA :	12.45	MOP :	15
Electric Heat Range :	-	Indoor Blower FLA :	-
Fan Motor Output :	-	Outdoor Fan LRA :	-



At Goodman, we believe in American dependability. Units are designed, engineered and assembled in the U.S.A.



Submittal Data Sheet

14.3 SEER2, Air Conditioner System, 4.0 Ton, Outdoor Unit-GSXN404810A*

Submitted By : Goodman/Amana Unitary Test System

Submitted To : N/A

Tags : AHRI 209322357 Products [GSXN404810A* , CA*F4961*6D*+TXV, GM9S801005CNA*], SEER2 14.3 , EER2 11.7

INDOOR Furnance (GM9S801005CN)
Dimensional Drawing is not available



At Goodman, we believe in American dependability. Units are designed, engineered and assembled in the U.S.A.

