

# REPAIR PARTS

---

## CHPE Indoor Horizontal Cased Coil

CHPE2430B4AA  
CHPE2430B4AB  
CHPE3636B4AA  
CHPE3636B4AB  
CHPE3642C4AA  
CHPE3642C4AB  
CHPE3743C4AA  
CHPE3743C4AB  
CHPE3743D4AA  
CHPE3743D4AB  
CHPE4860D4AA  
CHPE4860D4AB



This manual is to be used by qualified technicians only.

This manual replaces RP-4322A

---

© 2018 , 2021 Goodman Manufacturing Company, L.P. ♦ 5151 San Felipe St, Suite 500 ♦ Houston, TX 77056

RP-4322B

[www.goodmanmfg.com](http://www.goodmanmfg.com)

[www.amana-hac.com](http://www.amana-hac.com)

June 2021

## Important Information

---

### Index

Functional Parts List .....	3
Illustration and Parts .....	4 - 7

*Views shown are for parts illustrations only, not servicing procedures*

#### Text Codes:

AR - As Required

NA - Not Available

NS - Not Shown

00000000 - See Note

QTY - Quantity    Example (QTY 3) (If Quantity not shown, Quantity = 1)

M - Model        Example (M1) (If M Code not shown, then part is used on all Models)

#### Expanded Model Nomenclature:

Example M1 - Model#1 M2 - Model#2 M3 - Model#3
---

Goodman Manufacturing Company, L.P. is not responsible for personal injury or property damage resulting from improper service. Review all service information before beginning repairs.

Warranty service must be performed by an authorized technician, using authorized factory parts. If service is required after the warranty expires, Goodman Manufacturing Company, L.P. also recommends contacting an authorized technician and using authorized factory parts.

Goodman Manufacturing Company, L.P. reserves the right to discontinue, or change at any time, specifications or designs without notice or without incurring obligations.

For assistance within the U.S.A. contact:

Homeowner Support

Goodman Manufacturing Company, L.P.

19001 Kermier Road

Waller, Texas 77484

877-254-4729-Telephone

713-863-2382-Facsimile

For assistance outside the U.S.A. contact:

International Division

Goodman Manufacturing Company, L.P.

19001 Kermier Road

Waller, Texas 77484

713-861-2500-Telephone

713-863-2382-Facsimile

# Functional Parts

## Part

## No:

## Description:

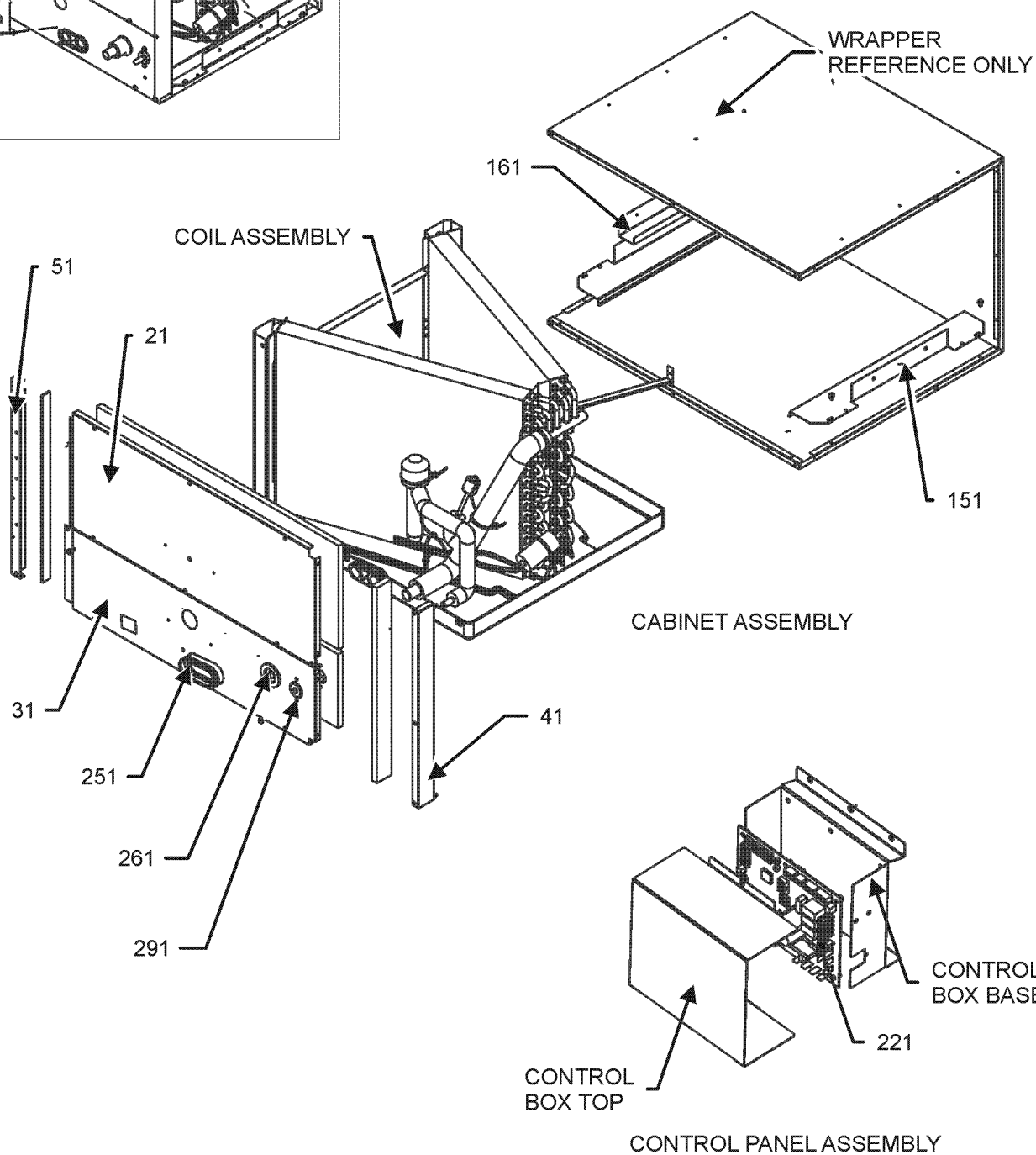
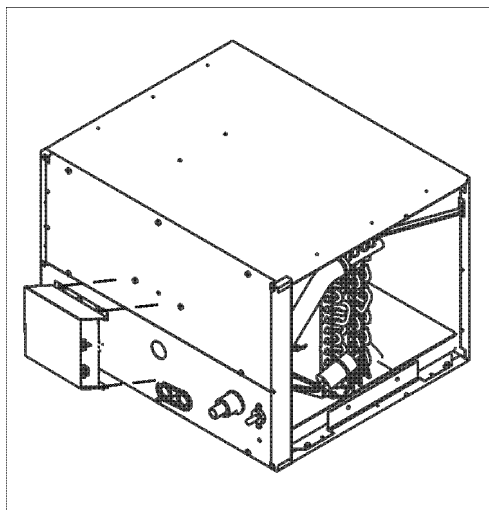
---

3P381420-2	EEV COIL
2P383866-2	PCB FAN ASSY
3S481012-1	PRESSURE SENSOR
3S500031-1	PULSE MOTOR EXPANS EEV
0130M00654	SHARED DATA (M6)
0130M00496	SHARED DATA (M1)
0130M00497	SHARED DATA (M3)
0130M00498	SHARED DATA (M5)
0130M00499	SHARED DATA (M7)
0130M00500	SHARED DATA (M9)
0130M00653	SHARED DATA (M4)
0130M00655	SHARED DATA (M8)
0130M00656	SHARED DATA (M10)
0130M00657	SHARED DATA (M12)
0130M00652	SHARED DATA (M2)
0130M00589	SHARED DATA, CHPE4860D4 (M11)

### Expanded Model Nomenclature

M1 - CHPE2430B4AA
M2 - CHPE2430B4AB
M3 - CHPE3636B4AA
M4 - CHPE3636B4AB
M5 - CHPE3642C4AA
M6 - CHPE3642C4AB
M7 - CHPE3743C4AA
M8 - CHPE3743C4AB
M9 - CHPE3743D4AA
M10 - CHPE3743D4AB
M11 - CHPE4860D4AA
M12 - CHPE4860D4AB

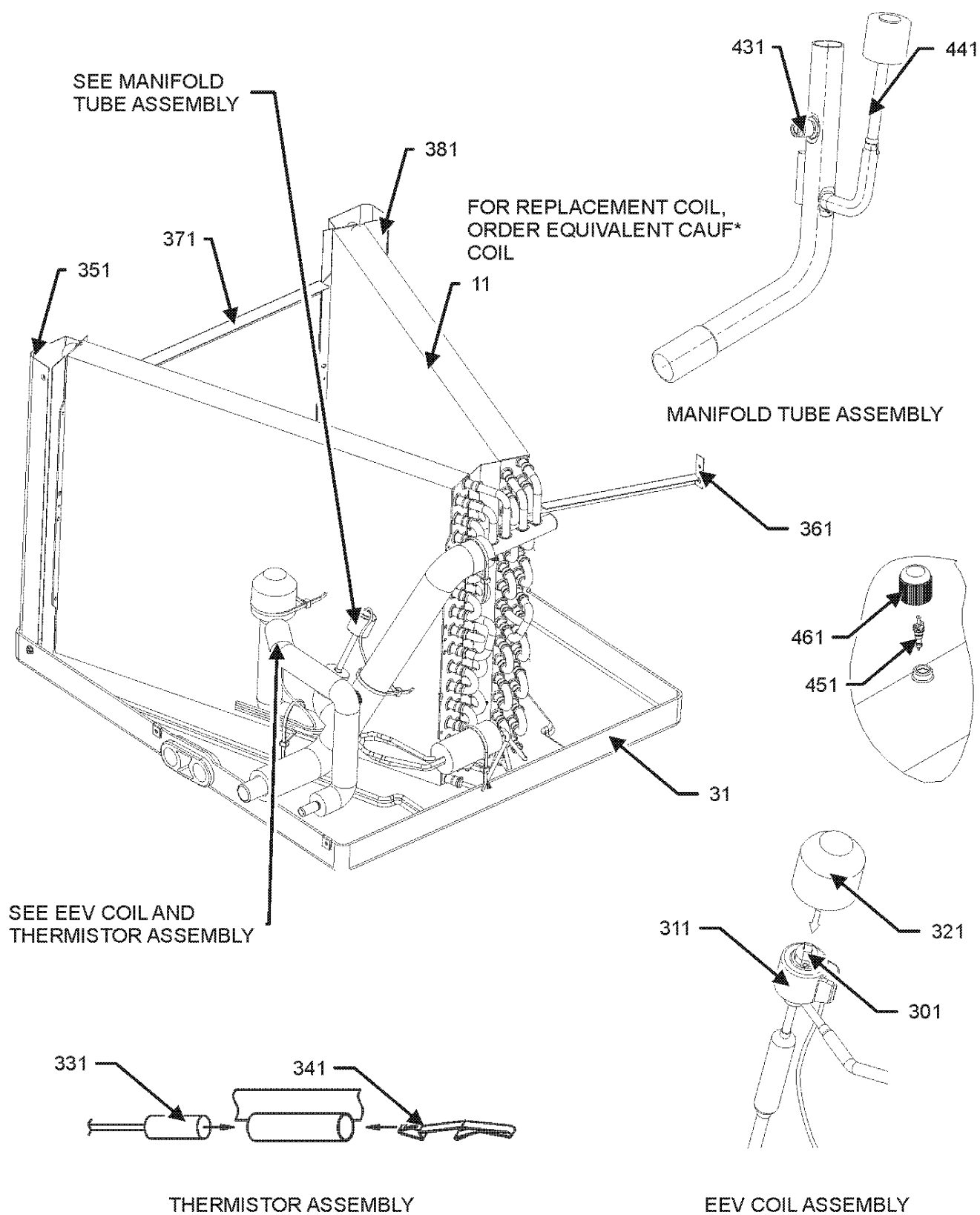
# CABINET ASSEMBLY



# CABINET ASSEMBLY

Ref. Part No: No:	Description:	Ref. Part No: No:	Description:
<b>Image 1:</b>		<b>Expanded Model Nomenclature</b>	
21	0121D00710PDG	PNL ACCESS UPR, CASD E COIL (M1, M2, M3, M4)	M1 - CHPE2430B4AA M2 - CHPE2430B4AB M3 - CHPE3636B4AA M4 - CHPE3636B4AB
21	0121D00711PDG	PNL ACCESS UPR, CASD E COIL (M5, M6, M7, M8)	M5 - CHPE3642C4AA M6 - CHPE3642C4AB M7 - CHPE3743C4AA M8 - CHPE3743C4AB
21	0121D00712PDG	PNL ACCESS UPR, CASD E COIL (M9, M10, M11, M12)	M9 - CHPE3743D4AA M10 - CHPE3743D4AB M11 - CHPE4860D4AA M12 - CHPE4860D4AB
31	0121D00724PDG	PNL ACCESS LWR, CASD E COIL	
41	0121A00790PDG	RAIL, TOP 17.5" PAINTED (M1, M2, M3, M4)	
41	0121A00791PDG	RAIL, TOP 21" PAINTED (M5, M6, M7, M8)	
41	0121A00792PDG	RAIL, TOP 21" PAINTED (M9, M10, M11, M12)	
51	0121A01125PDG	RAIL, BOTTOM 17.5", PAINTED (M1, M2, M3, M4)	
51	0121A01126PDG	RAIL, BOTTOM 21", PAINTED (M5, M6, M7, M8)	
51	0121A01127PDG	RAIL, BOTTOM 24.5", PAINTED (M9, M10, M11, M12)	
151	3810022D	BOTTOM RAIL BRACKET (QTY 2)	
161	6071200	U CHANNEL BRACKET	
221	2P383866-2	PCB FAN ASSY	
251	0154A00000BL	GASKET DRAIN PAN	
261	B1392630	GROMMET	
291	0164A00002	GROMMET	
NS	5001213	FLANGE FRONT-REAR MED (M1, M2, M3, M4)	
NS	5001215	FLANGE FRONT-REAR XLG (M9, M10, M11, M12)	
NS	M0501302	GROMMET-PIPE	
NS	0121D00590	PNL BASE, CONTROL BOX	
NS	0121D00589PDG	PNL TOP, CONTROL BOX	
NS	0130M00496	SHARED DATA (M1)	
NS	0130M00497	SHARED DATA (M3)	
NS	0130M00498	SHARED DATA (M5)	
NS	0130M00499	SHARED DATA (M7)	
NS	0130M00500	SHARED DATA (M9)	
NS	0130M00652	SHARED DATA (M2)	
NS	0130M00653	SHARED DATA (M4)	
NS	0130M00654	SHARED DATA (M6)	
NS	0130M00655	SHARED DATA (M8)	
NS	0130M00656	SHARED DATA (M10)	
NS	0130M00657	SHARED DATA (M12)	
NS	0130M00589	SHARED DATA, CHPE4860D4 (M11)	
NS	0259A00038	WIRE HARNESS ASSY	
NS	0259A00039	WIRE HARNESS ASSY	
NS	0259A00040	WIRE HARNESS ASSY	
NS	0259D00006	WIRE HARNESS ASSY	
NS	0259D00001	WIRE HARNESS (TRANSFORMER - PCB)	

# COIL TUBING ASSEMBLY



NOTE: COIL ASSEMBLY MAY DIFFER FROM WHAT IS SHOWN

# COIL TUBING ASSEMBLY

Ref. Part No: No:	Description:	Ref. Part No: No:	Description:
----------------------	--------------	----------------------	--------------

## Image 1:

11	NA	ORDER EQUIVALENT CAUF* COIL
31	B1755943DF	SM & MD DRAIN PAN (HT)
301	3S500031-1	PULSE MOTOR EXPANS EEV
311	3P381420-2	EEV COIL
321	4P399446-1	WATERPROOF CAP
331	4P389796-1	THERMISTOR ASSY
341	4PA38890-1	MOUNTING SPRING, THERMISTOR
351	6071000	COIL SUPPORT, LARGE (HT) (M9, M10, M11, M12)
351	3810019D	COIL SUPPORT, MEDIUM (HT) (M1, M2, M3, M4)
351	6071005	SUPPORT, COIL (M5, M6, M7, M8)
361	0121D00082	BRACKET, COIL STIFF FR (M1, M2)
361	0121D00084	BRACKET, COIL STIFF FR (M3, M4, M5, M6, M9, M10)
361	0121D00086	BRACKET, COIL STIFF FR (M7, M8)
361	0121D00847	BRACKET, COIL STIFF FR (M11, M12)
371	3870902	COIL STIFFENING BRACKET (M1, M2, M3, M4)
371	6070905	COIL STIFFENING BRACKET REAR (M5, M6, M7, M8, M9, M10, M11, M12)
381	6071002	COIL EXTENSION, LARGE (HT) (M9, M10)
381	3810028D	COIL EXTENSION, MEDIUM (HT) (M1, M2)
431	B1373311	ACCESS VALVE FITTING
441	3S481012-1	PRESSURE SENSOR
451	B1787000	VALVE CORE C/CL/CU/CP
461	0163M00175	CAP W/O-RING
NS	3P277773-24	FILTER (M1, M2, M3, M4, M5, M6)
NS	3P277773-25	FILTER (M7, M8, M9, M10, M11, M12)
NS	3P277773-5	FILTER (M1, M2, M3, M4, M5, M6)
NS	3P277773-8	FILTER (M7, M8, M9, M10, M11, M12)

## Expanded Model Nomenclature

M1 - CHPE2430B4AA
M2 - CHPE2430B4AB
M3 - CHPE3636B4AA
M4 - CHPE3636B4AB
M5 - CHPE3642C4AA
M6 - CHPE3642C4AB
M7 - CHPE3743C4AA
M8 - CHPE3743C4AB
M9 - CHPE3743D4AA
M10 - CHPE3743D4AB
M11 - CHPE4860D4AA
M12 - CHPE4860D4AB

FOR REPLACEMENT COIL, ORDER EQUIVALENT CAUF\* COIL