

# REPAIR PARTS

---

## CHPE Indoor Horizontal Cased Coil

CHPE2430B4AA

CHPE3636B4AA

CHPE3642C4AA

CHPE3743C4AA

CHPE3743D4AA

CHPE4860D4AA



This manual is to be used by qualified technicians only.

This manual replaces RP-4322

© 2018 Goodman Manufacturing Company, L.P. ♦ 5151 San Felipe St, Suite 500 ♦ Houston, TX 77056

## Important Information

---

### Index

Functional Parts List .....	3
Illustration and Parts .....	4 - 7

*Views shown are for parts illustrations only, not servicing procedures.*

#### Text Codes:

AR - As Required

NA - Not Available

NS - Not Shown

00000000 - See Note

QTY - Quantity    Example (QTY 3) (If Quantity not shown, Quantity = 1)

M - Model        Example (M1) (If M Code not shown, then part is used on all Models)

#### Expanded Model Nomenclature:

Example M1 - Model#1 M2 - Model#2 M3 - Model#3
---

Goodman Manufacturing Company, L.P. is not responsible for personal injury or property damage resulting from improper service. Review all service information before beginning repairs.

Warranty service must be performed by an authorized technician, using authorized factory parts. If service is required after the warranty expires, Goodman Manufacturing Company, L.P. also recommends contacting an authorized technician and using authorized factory parts.

Goodman Manufacturing Company, L.P. reserves the right to discontinue, or change at any time, specifications or designs without notice or without incurring obligations.

For assistance within the U.S.A. contact:

Homeowner Support

Goodman Manufacturing Company, L.P.

19001 Kermier Road

Waller, Texas 77484

877-254-4729-Telephone

713-863-2382-Facsimile

For assistance outside the U.S.A. contact:

International Division

Goodman Manufacturing Company, L.P.

19001 Kermier Road

Waller, Texas 77484

713-861-2500-Telephone

713-863-2382-Facsimile

# Functional Parts

## Part

## No:

## Description:

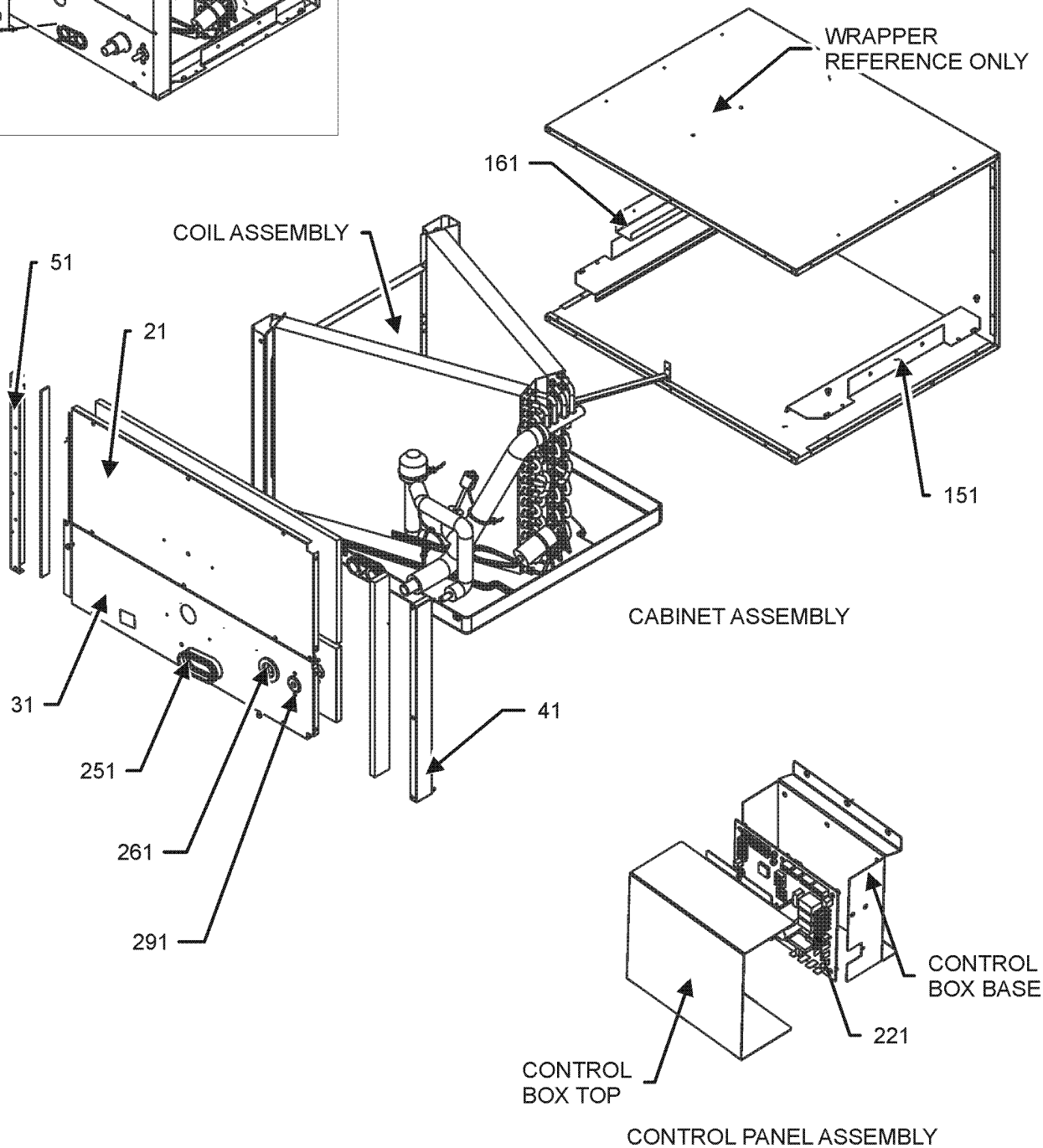
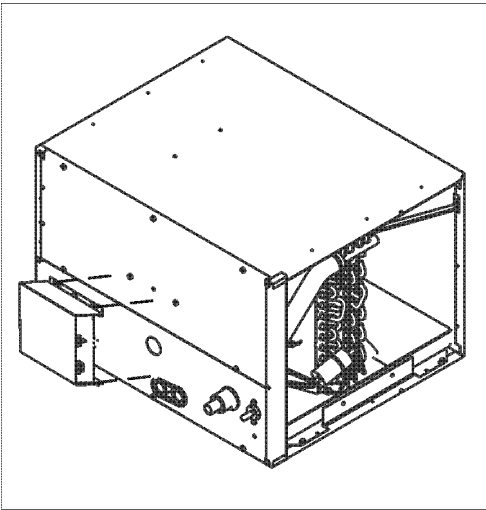
---

3P381420-2	EEV COIL
2P383866-2	PCB FAN ASSY
3S481012-1	PRESSURE SENSOR
3S500031-1	PULSE MOTOR EXPANS EEV
0130M00500	SHARED DATA (M5)
0130M00499	SHARED DATA (M4)
0130M00498	SHARED DATA (M3)
0130M00497	SHARED DATA (M2)
0130M00496	SHARED DATA (M1)
0130M00589	SHARED DATA, CHPE4860D4 (M6)

### Expanded Model Nomenclature

M1 - CHPE2430B4AA
M2 - CHPE3636B4AA
M3 - CHPE3642C4AA
M4 - CHPE3743C4AA
M5 - CHPE3743D4AA
M6 - CHPE4860D4AA

CABINET ASSEMBLY



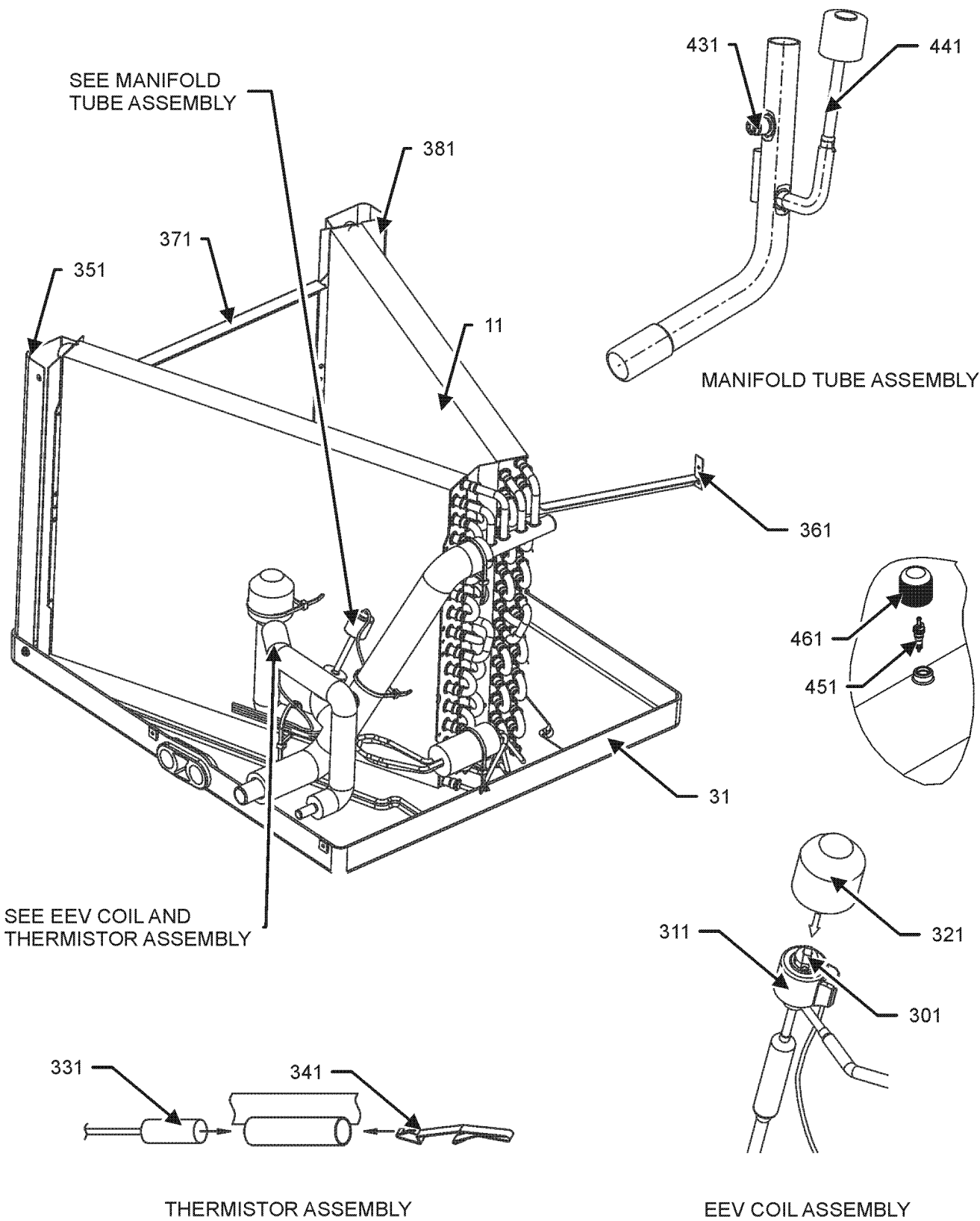
# CABINET ASSEMBLY

Ref. Part No: No:	Description:	Ref. Part No: No:	Description:
<b>Image 1:</b>			
21	0121D00710PDG		PNL ACCESS UPR, CASED E COIL (M1, M2)
21	0121D00711PDG		PNL ACCESS UPR, CASED E COIL (M3, M4)
21	0121D00712PDG		PNL ACCESS UPR, CASED E COIL (M5, M6)
31	0121D00724PDG		PNL ACCESS LWR, CASED E COIL
41	0121A00790PDG		RAIL, TOP 17.5" PAINTED (M1, M2)
41	0121A00791PDG		RAIL, TOP 21" PAINTED (M3, M4)
41	0121A00792PDG		RAIL, TOP 21" PAINTED (M5, M6)
51	0121A01125PDG		RAIL, BOTTOM 17.5", PAINTED (M1, M2)
51	0121A01126PDG		RAIL, BOTTOM 21",PAINTED (M3, M4)
51	0121A01127PDG		RAIL, BOTTOM 24.5",PAINTED (M5, M6)
151	3810022D		BOTTOM RAIL BRACKET (QTY 2)
161	6071200		U CHANNEL BRACKET
221	2P383866-2		PCB FAN ASSY
251	0154A00000BL		GASKET DRAIN PAN
261	B1392630		GROMMET
291	0164A00002		GROMMET
NS	M0501302		GROMMET-PIPE
NS	0121D00590		PNL BASE, CONTROL BOX
NS	0121D00589PDG		PNL TOP, CONTROL BOX
NS	0130M00496		SHARED DATA (M1)
NS	0130M00497		SHARED DATA (M2)
NS	0130M00498		SHARED DATA (M3)
NS	0130M00499		SHARED DATA (M4)
NS	0130M00500		SHARED DATA (M5)
NS	0130M00589		SHARED DATA, CHPE4860D4 (M6)
NS	0259A00038		WIRE HARNESS ASSY
NS	0259A00039		WIRE HARNESS ASSY
NS	0259A00040		WIRE HARNESS ASSY
NS	0259D00006		WIRE HARNESS ASSY
NS	0259D00001		WIRE HARNESS (TRANSFORMER - PCB)

## Expanded Model Nomenclature

M1 - CHPE2430B4AA
M2 - CHPE3636B4AA
M3 - CHPE3642C4AA
M4 - CHPE3743C4AA
M5 - CHPE3743D4AA
M6 - CHPE4860D4AA

COIL TUBING ASSEMBLY



NOTE: COIL ASSEMBLY MAY DIFFER FROM WHAT IS SHOWN

# COIL TUBING ASSEMBLY

Ref. Part No: No:	Description:	Ref. Part No: No:	Description:
<b>Image 1:</b>			
11	0270D00926		TUBING ASSY, E COIL (M1)
11	0270D00927		TUBING ASSY, E COIL (M2)
11	0270D00928		TUBING ASSY, E COIL (M3)
11	0270D00929		TUBING ASSY, E COIL (M4)
11	0270D00930		TUBING ASSY, E COIL (M5)
11	0270D00987		TUBING ASSY, E COIL (M6)
31	B1755943DF		SM & MD DRAIN PAN (HT)
301	3S500031-1		PULSE MOTOR EXPANS EEV
311	3P381420-2		EEV COIL
321	4P399446-1		WATERPROOF CAP
331	4P389796-1		THERMISTOR ASSY
341	4PA38890-1		MOUNTING SPRING, THERMISTOR
351	6071000		COIL SUPPORT, LARGE (HT) (M5, M6)
351	3810019D		COIL SUPPORT, MEDIUM (HT) (M1, M2)
351	6071005		SUPPORT, COIL (M3, M4)
361	0121D00082		BRACKET, COIL STIFF FR (M1)
361	0121D00084		BRACKET, COIL STIFF FR (M2, M3, M5)
361	0121D00086		BRACKET, COIL STIFF FR (M4, M6)
371	3870902		COIL STIFFENING BRACKET (M1, M2)
371	6070905		COIL STIFFENING BRACKET REAR (M3, M4, M5, M6)
381	6071002		COIL EXTENSION, LARGE (HT) (M5)
381	3810028D		COIL EXTENSION, MEDIUM (HT) (M1)
431	B1373311		ACCESS VALVE FITTING
441	3S481012-1		PRESSURE SENSOR
451	B1787000		VALVE CORE C/CL/CU/CP
461	0163M00175		CAP W/O-RING
NS	3P277773-24		FILTER (M1, M2, M3)
NS	3P277773-25		FILTER (M4, M5, M6)
NS	3P277773-5		FILTER (M1, M2, M3)
NS	3P277773-8		FILTER (M4, M5, M6)

## Expanded Model Nomenclature

M1 - CHPE2430B4AA
M2 - CHPE3636B4AA
M3 - CHPE3642C4AA
M4 - CHPE3743C4AA
M5 - CHPE3743D4AA
M6 - CHPE4860D4AA