

REPAIR PARTS

CAPEA Indoor Upflow/Downflow Cased Coil

CAPEA1818B4AA
CAPEA1818B4AB
CAPEA1818C4AA
CAPEA1818C4AB
CAPEA2422B4AA
CAPEA2422B4AB
CAPEA2422C4AA
CAPEA2422C4AB
CAPEA2422D4AB
CAPEA3026B4AA
CAPEA3026B4AB
CAPEA3026C4AA
CAPEA3026C4AB
CAPEA3026D4AA
CAPEA3026D4AB



This manual is to be used by qualified technicians only.

This manual replaces RP-4321

© 2018 , 2021 Goodman Manufacturing Company, L.P. ♦ 5151 San Felipe St, Suite 500 ♦ Houston, TX 77056

Important Information

Index

Functional Parts List	3
Illustration and Parts	4 - 7

Views shown are for parts illustrations only, not servicing procedures

Text Codes:

AR - As Required

NA - Not Available

NS - Not Shown

00000000 - See Note

QTY - Quantity Example (QTY 3) (If Quantity not shown, Quantity = 1)

M - Model Example (M1) (If M Code not shown, then part is used on all Models)

Expanded Model Nomenclature:

Example M1 - Model#1 M2 - Model#2 M3 - Model#3

Goodman Manufacturing Company, L.P. is not responsible for personal injury or property damage resulting from improper service. Review all service information before beginning repairs.

Warranty service must be performed by an authorized technician, using authorized factory parts. If service is required after the warranty expires, Goodman Manufacturing Company, L.P. also recommends contacting an authorized technician and using authorized factory parts.

Goodman Manufacturing Company, L.P. reserves the right to discontinue, or change at any time, specifications or designs without notice or without incurring obligations.

For assistance within the U.S.A. contact:

Homeowner Support

Goodman Manufacturing Company, L.P.

19001 Kermier Road

Waller, Texas 77484

877-254-4729-Telephone

713-863-2382-Facsimile

For assistance outside the U.S.A. contact:

International Division

Goodman Manufacturing Company, L.P.

19001 Kermier Road

Waller, Texas 77484

713-861-2500-Telephone

713-863-2382-Facsimile

Functional Parts

Part

No:

Description:

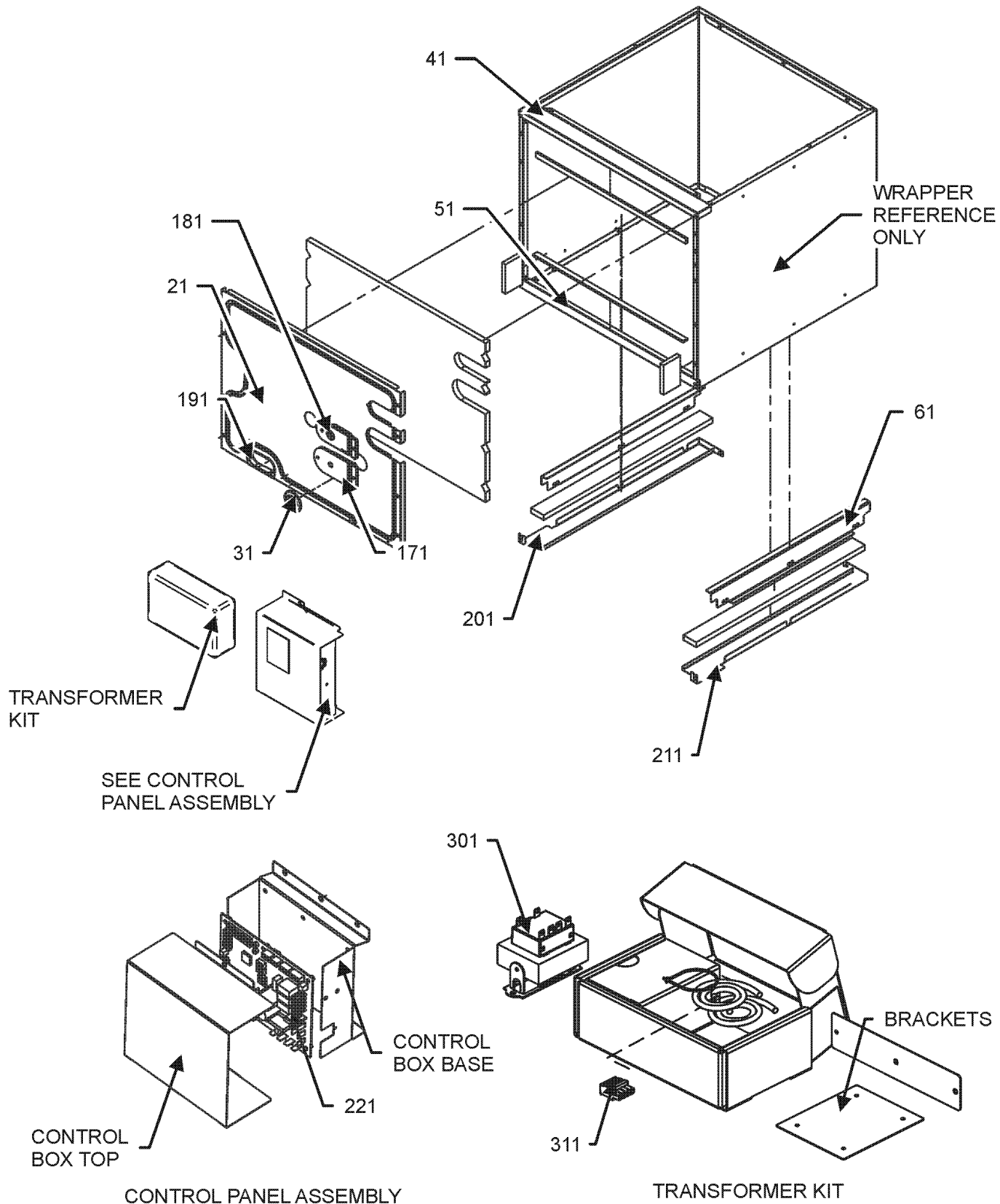
0130D00002	4-PIN WIRE TERMINAL
3P381420-2	EEV COIL
2P383866-2	PCB FAN ASSY
3S481012-1	PRESSURE SENSOR
3S500031-1	PULSE MOTOR EXPANS EEV
0130M00643	SHARED DATA (M8)
0130M00489	SHARED DATA (M1)
0130M00490	SHARED DATA (M5)
0130M00491	SHARED DATA (M7)
0130M00493	SHARED DATA (M10)
0130M00494	SHARED DATA (M12)
0130M00495	SHARED DATA (M14)
0130M00508	SHARED DATA (M3)
0130M00640	SHARED DATA (M2)
0130M00642	SHARED DATA (M6)
0130M00644	SHARED DATA (M9)
0130M00645	SHARED DATA (M11)
0130M00646	SHARED DATA (M13)
0130M00647	SHARED DATA (M15)
0130M00641	SHARED DATA (M4)
0130M00306	TRANSFORMER

Expanded Model Nomenclature

M1 - CAPEA1818B4AA
 M2 - CAPEA1818B4AB
 M3 - CAPEA1818C4AA
 M4 - CAPEA1818C4AB
 M5 - CAPEA2422B4AA
 M6 - CAPEA2422B4AB
 M7 - CAPEA2422C4AA
 M8 - CAPEA2422C4AB
 M9 - CAPEA2422D4AB
 M10 - CAPEA3026B4AA
 M11 - CAPEA3026B4AB
 M12 - CAPEA3026C4AA
 M13 - CAPEA3026C4AB
 M14 - CAPEA3026D4AA
 M15 - CAPEA3026D4AB

CABINET AND CONTROL BOX ASSEMBLY

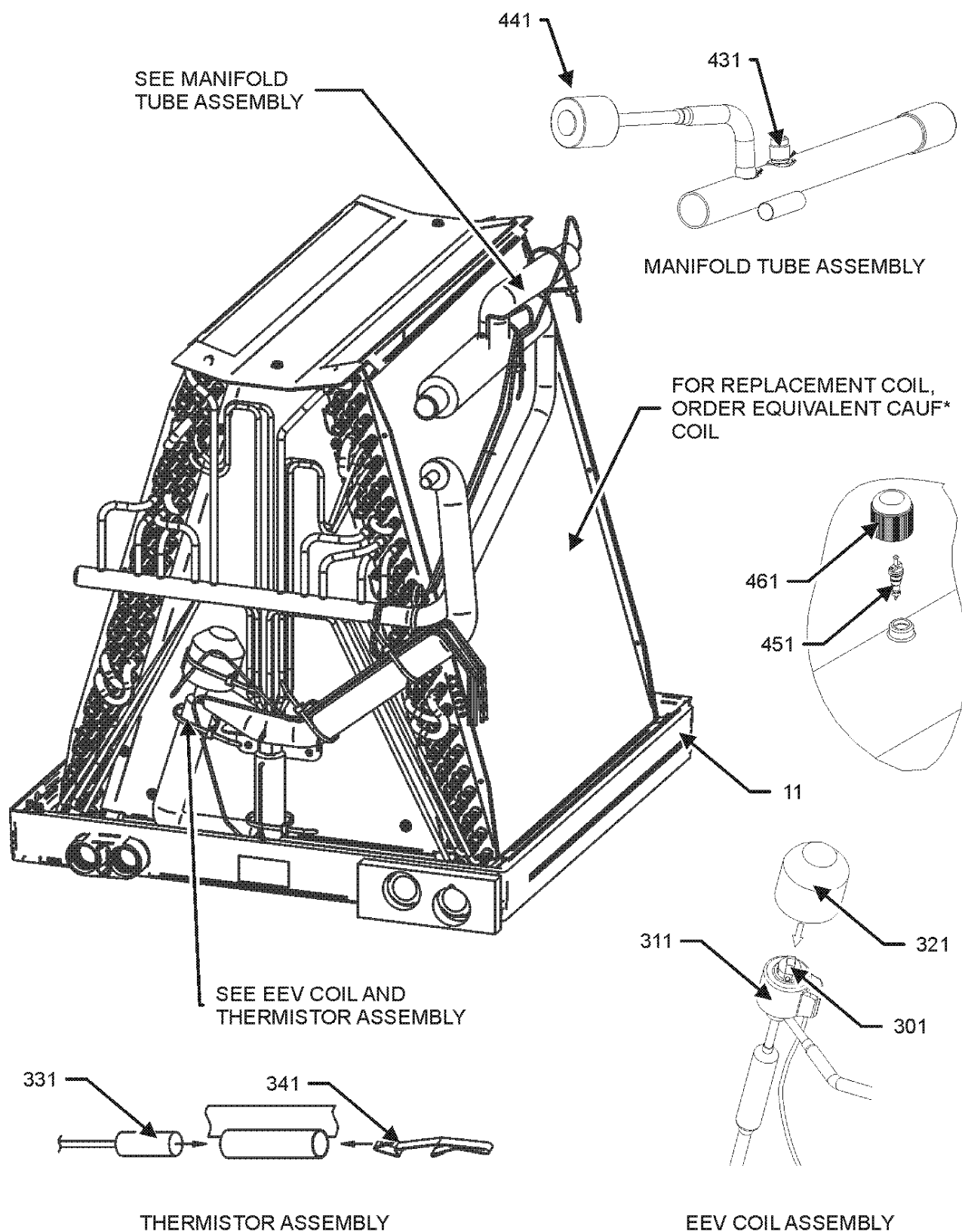
CABINET ASSEMBLY



CABIENT AND CONTROL BOX ASSEMBLY

Ref. Part No: No:	Description:		Ref. Part No: No:	Description:	
Image 1:			Image 1:		
21	0121D00692PDG	PNL ACCESS PNT, CASED E COIL (M1, M2)	NS	0259A00039	WIRE HARNESS ASSY
21	0121D00693PDG	PNL ACCESS PNT, CASED E COIL (M5, M6)	NS	0259A00040	WIRE HARNESS ASSY
21	0121D00694PDG	PNL ACCESS PNT, CASED E COIL (M7, M8)	NS	0259D00006	WIRE HARNESS ASSY
21	0121D00695PDG	PNL ACCESS PNT, CASED E COIL (M9)	NS	0259D00001	WIRE HARNESS (TRANSFORMER - PCB)
21	0121D00696PDG	PNL ACCESS PNT, CASED E COIL (M10, M11)	Expanded Model Nomenclature <div>M1 - CAPEA1818B4AA M2 - CAPEA1818B4AB M3 - CAPEA1818C4AA M4 - CAPEA1818C4AB M5 - CAPEA2422B4AA M6 - CAPEA2422B4AB M7 - CAPEA2422C4AA M8 - CAPEA2422C4AB M9 - CAPEA2422D4AB M10 - CAPEA3026B4AA M11 - CAPEA3026B4AB M12 - CAPEA3026C4AA M13 - CAPEA3026C4AB M14 - CAPEA3026D4AA M15 - CAPEA3026D4AB</div>		
21	0121D00702PDG	PNL ACCESS PNT, CASED E COIL (M12, M13)			
21	0121D00703PDG	PNL ACCESS PNT, CASED E COIL (M14, M15)			
21	0121D00704PDG	PNL ACCESS, CASED E COIL (M3, M4)			
31	M0501302	GROMMET-PIPE			
41	0121D00305PDG	RAIL TOP, CASED E COIL, PAINTED (M1, M2, M5, M6, M10, M11)			
41	0121D00306PDG	RAIL TOP, CASED E COIL, PAINTED (M3, M4, M7, M8, M12, M13)			
41	0121D00307PDG	RAIL TOP, CASED E COIL, PAINTED (M9, M14, M15)			
51	0121D00503PDG	RAIL BOTTOM, CASED COIL, PAINTED (M1, M2, M5, M6, M10, M11)			
51	0121D00504PDG	RAIL BOTTOM, CASED COIL, PAINTED (M3, M4, M7, M8, M12, M13)			
51	0121D00505PDG	RAIL BOTTOM, CASED COIL, PAINTED (M9, M14, M15)			
61	0121D00264	RAIL DRAIN PAN, CASED COIL (QTY 2)			
171	0154D00015	GROMMET, LIQUID LINE (M12, M13, M14, M15)			
171	0154D00006	GROMMET, LIQUID TUBE (M1, M2, M3, M4, M5, M6, M7, M8, M9, M10, M11)			
181	0154D00005	GROMMET, SUCTION (M1, M2, M3, M4, M5, M6, M7, M8, M9)			
181	0154D00014	GROMMET, SUCTION (M10, M11, M12, M13, M14, M15)			
191	0154A00047	GASKET, DRAIN PAN			
201	5001010	PLATE, LEFT BLOCK OFF			
211	5001011	PLATE, RIGHT BLOCK OFF			
221	2P383866-2	PCB FAN ASSY			
301	0130M00306	TRANSFORMER			
311	0130D00002	4-PIN WIRE TERMINAL			
NS	5001215	FLANGE FRONT-REAR XLG (M9)			
NS	5001211	FLANGE SIDE (M9)			
NS	0121D00639	PNL BASE, CONTORL BOX			
NS	0121D00640PDG	PNL TOP, CONTROL BOX			
NS	0130M00489	SHARED DATA (M1)			
NS	0130M00490	SHARED DATA (M5)			
NS	0130M00491	SHARED DATA (M7)			
NS	0130M00493	SHARED DATA (M10)			
NS	0130M00494	SHARED DATA (M12)			
NS	0130M00495	SHARED DATA (M14)			
NS	0130M00508	SHARED DATA (M3)			
NS	0130M00640	SHARED DATA (M2)			
NS	0130M00641	SHARED DATA (M4)			
NS	0130M00642	SHARED DATA (M6)			
NS	0130M00643	SHARED DATA (M8)			
NS	0130M00644	SHARED DATA (M9)			
NS	0130M00645	SHARED DATA (M11)			
NS	0130M00646	SHARED DATA (M13)			
NS	0130M00647	SHARED DATA (M15)			
NS	0259A00038	WIRE HARNESS ASSY			

COIL ASSEMBLY



NOTE: COIL ASSEMBLY MAY DIFFER FROM WHAT IS SHOWN

COIL ASSEMBLY

Ref. Part No: No:	Description:	Ref. Part No: No:	Description:
----------------------	--------------	----------------------	--------------

Image 1:

11	0161D00049	DRAIN PAN MAIN, E COIL (M1, M2, M5, M6, M10, M11)
11	0161D00050	DRAIN PAN MAIN, E COIL (M3, M4, M7, M8, M12, M13)
11	0161D00051	DRAIN PAN MAIN, E COIL (M9, M14, M15)
301	3S500031-1	PULSE MOTOR EXPANS EEV
311	3P381420-2	EEV COIL
321	4P399446-1	WATERPROOF CAP
331	4P389796-1	THERMISTOR ASSY
341	4PA38890-1	MOUNTING SPRING, THERMISTOR
431	B1373311	ACCESS VALVE FITTING
441	3S481012-1	PRESSURE SENSOR
451	B1787000	VALVE CORE C/CL/CU/CP
461	0163M00175	CAP W/O-RING
NS	3P277773-24	FILTER (M1, M2, M3, M4, M5, M6, M7, M8, M9)
NS	3P277773-25	FILTER (M10, M11, M12, M13, M14, M15)
NS	3P277773-5	FILTER (M1, M2, M3, M4, M5, M6, M7, M8, M9)
NS	3P277773-8	FILTER (M10, M11, M12, M13, M14, M15)
NS	0154A00047	GASKET, DRAIN PAN

Expanded Model Nomenclature

M1 - CAPEA1818B4AA
M2 - CAPEA1818B4AB
M3 - CAPEA1818C4AA
M4 - CAPEA1818C4AB
M5 - CAPEA2422B4AA
M6 - CAPEA2422B4AB
M7 - CAPEA2422C4AA
M8 - CAPEA2422C4AB
M9 - CAPEA2422D4AB
M10 - CAPEA3026B4AA
M11 - CAPEA3026B4AB
M12 - CAPEA3026C4AA
M13 - CAPEA3026C4AB
M14 - CAPEA3026D4AA
M15 - CAPEA3026D4AB

FOR REPLACEMENT COIL, ORDER EQUIVALENT CAUF* COIL