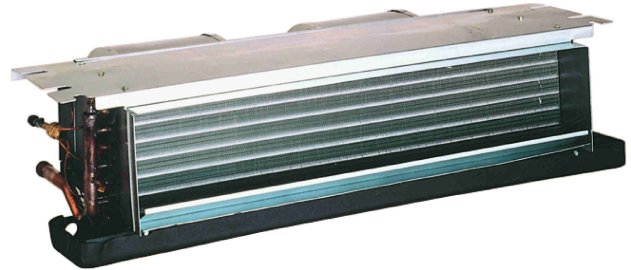


REPAIR PARTS

ACNF Horizontal Fan Coil

ACNF180016DC
ACNF180016DD
ACNF180516DD
ACNF180516DE
ACNF180616DD
ACNF180616DE
ACNF180816DD
ACNF180816DE
ACNF240016DC
ACNF240516DD
ACNF240616DD
ACNF240816DD
ACNF241016DD
ACNF250016AB
ACNF250516AB
ACNF250616AB
ACNF250816AB
ACNF251016AB
ACNF300016DC
ACNF300516DD
ACNF300616DD
ACNF300816DD
ACNF301016DD
ACNF310016AB
ACNF310516AB
ACNF310616AB
ACNF310816AB
ACNF311016AB



This manual is to be used by qualified technicians only.

This manual replaces RP-4311A.

© 2016, 2018, 2020 Goodman Manufacturing Company, L.P. ♦ 5151 San Felipe St, Suite 500 ♦ Houston, TX 77056

Important Information

Index

Functional Parts List	3
Illustration and Parts	4 - 9

Views shown are for parts illustrations only, not servicing procedures

Text Codes:

AR - As Required

NA - Not Available

NS - Not Shown

00000000 - See Note

QTY - Quantity Example (QTY 3) (If Quantity not shown, Quantity = 1)

M - Model Example (M1) (If M Code not shown, then part is used on all Models)

Expanded Model Nomenclature:

Example M1 - Model#1 M2 - Model#2 M3 - Model#3

Goodman Manufacturing Company, L.P. is not responsible for personal injury or property damage resulting from improper service. Review all service information before beginning repairs.

Warranty service must be performed by an authorized technician, using authorized factory parts. If service is required after the warranty expires, Goodman Manufacturing Company, L.P. also recommends contacting an authorized technician and using authorized factory parts.

Goodman Manufacturing Company, L.P. reserves the right to discontinue, or change at any time, specifications or designs without notice or without incurring obligations.

For assistance within the U.S.A. contact:

Homeowner Support

Goodman Manufacturing Company, L.P.

19001 Kermier Road

Waller, Texas 77484

877-254-4729-Telephone

713-863-2382-Facsimile

For assistance outside the U.S.A. contact:

International Division

Goodman Manufacturing Company, L.P.

19001 Kermier Road

Waller, Texas 77484

713-861-2500-Telephone

713-863-2382-Facsimile

Functional Parts

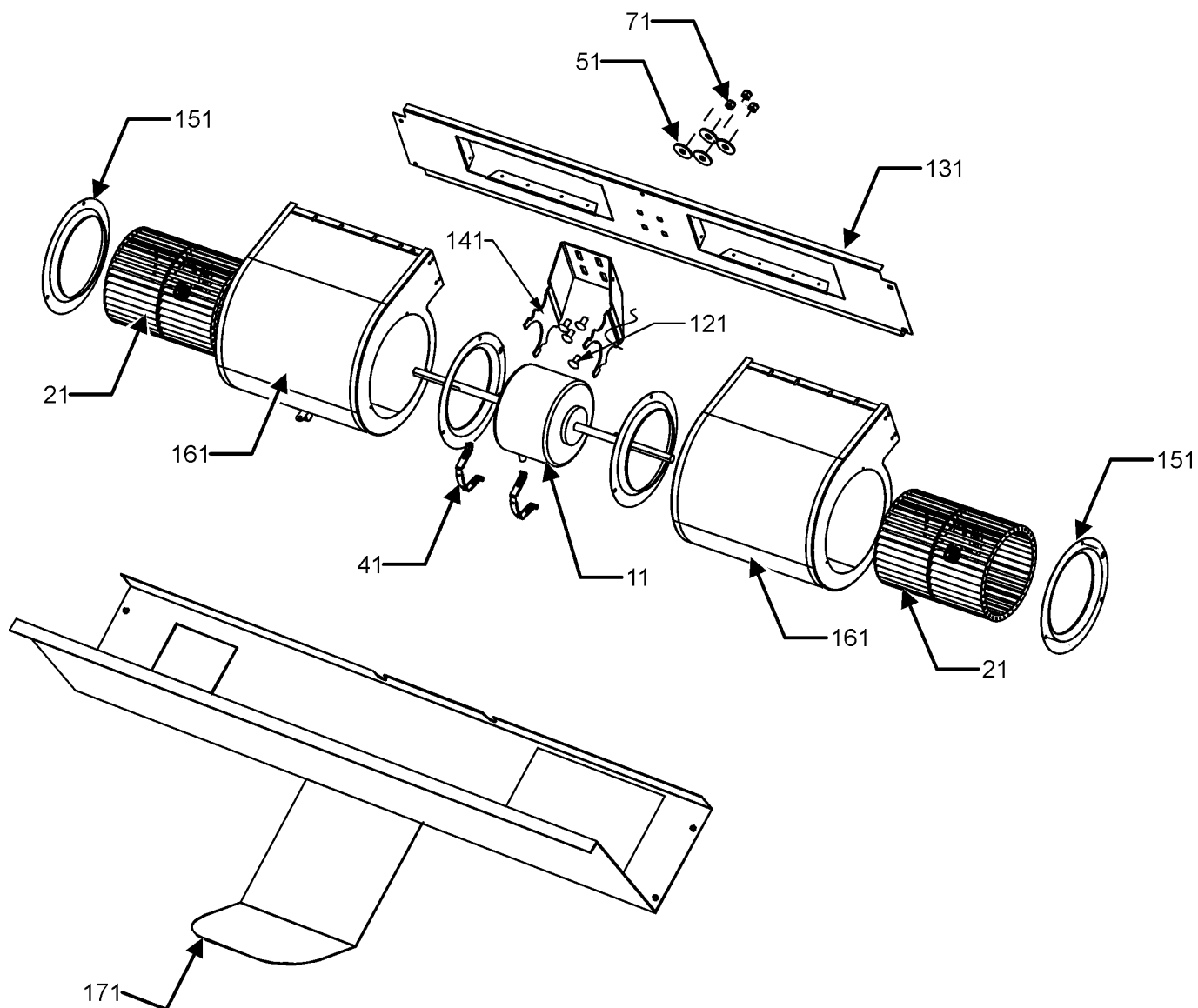
Part

No: **Description:**

		Expanded Model Nomenclature
0131M00779	ACNF25 BLDC CONTROLLER-1/4 HP (M14, M15, M16, M17, M18)	M1 - ACNF180016DC
0131M00780	ACNF31 BLDC CONTROLLER-1/4HP (M24, M25, M26, M27, M28)	M2 - ACNF180016DD
0131M00778	BLDC MOTOR-1/4 HP (M14, M15, M16, M17, M18, M24, M25, M26, M27, M28)	M3 - ACNF180516DD
CAP050000370LA	CAPACITOR 5/370V (M1, M2, M3, M4, M5, M6, M7, M8, M9, M10, M11, M12, M13, M19, M20, M21, M22, M23)	M4 - ACNF180516DE
CONT2P040024V	CONTACTOR 40 AMP, 2P, 24V (M3, M4, M5, M6, M7, M8, M10, M11, M12, M13, M15, M16, M17, M18, M20, M21, M22, M23, M25, M26, M27, M28)	M5 - ACNF180616DD
PCBFM103	ELECTRONIC BLOWER TIME DELAY (M1, M2, M3, M4, M5, M6, M7, M8, M9, M10, M11, M12, M13, M19, M20, M21, M22, M23)	M6 - ACNF180616DE
0175A00000	HEAT ELEMENT 4.8 KW (M3, M4, M10, M15, M20, M25)	M7 - ACNF180816DD
0175A00001	HEAT ELEMENT 6.0 KW (M5, M6, M11, M16, M21, M26)	M8 - ACNF180816DE
0175A00002	HEAT ELEMENT 7.3 KW (M7, M8, M12, M17, M22, M27)	M9 - ACNF240016DC
0175A00003	HEAT ELEMENT 9.8 KW (M13, M18, M23, M28)	M10 - ACNF240516DD
0131M00803	MOTOR, 1/4 HP, 2 SP, 4 PL (M9, M10, M11, M12, M13, M19, M20, M21, M22, M23)	M11 - ACNF240616DD
0131M00802	MOTOR, 1/8 HP, 2 SP, 4 PL (M1, M3, M5, M7)	M12 - ACNF240816DD
0131A00027	MOTOR, 1/8HP, 2SP, 4PL (M2, M4, M6, M8)	M13 - ACNF241016DD
0130M00138	TRANSFORMER 208/230, 24V	M14 - ACNF250016AB
SPECIAL PARTS		M15 - ACNF250516AB
PKCG-4001ZB	PISTON KIT CHART	M16 - ACNF250616AB
		M17 - ACNF250816AB
		M18 - ACNF251016AB
		M19 - ACNF300016DC
		M20 - ACNF300516DD
		M21 - ACNF300616DD
		M22 - ACNF300816DD
		M23 - ACNF301016DD
		M24 - ACNF310016AB
		M25 - ACNF310516AB
		M26 - ACNF310616AB
		M27 - ACNF310816AB
		M28 - ACNF311016AB

Blower Assembly

BLOWER ASSEMBLY



Blower Assembly

Ref. Part No: No:		Description:	Ref. Part No: No: Description:	
Image 1:			Expanded Model Nomenclature	
11	0131M00778	BLDC MOTOR-1/4 HP (M14, M15, M16, M17, M18, M24, M25, M26, M27, M28)	M1 - ACNF180016DC	
11	0131M00803	MOTOR, 1/4 HP, 2 SP, 4 PL (M9, M10, M11, M12, M13, M19, M20, M21, M22, M23)	M2 - ACNF180016DD	
11	0131M00802	MOTOR, 1/8 HP, 2 SP, 4 PL (M1, M3, M5, M7)	M3 - ACNF180516DD	
11	0131A00027	MOTOR, 1/8HP, 2SP, 4PL (M2, M4, M6, M8)	M4 - ACNF180516DE	
21	0150M00025	Blower Wheel 5.75 X 6.50 (M1, M2, M3, M4, M5, M6, M7, M8)	M5 - ACNF180616DD	
21	0150M00026	Blower Wheel 6.30 X 8.06 (M9, M10, M11, M12, M13, M14, M15, M16, M17, M18)	M6 - ACNF180616DE	
21	0150M00027	Blower Wheel 6.70 X 8.06 (M19, M20, M21, M22, M23, M24, M25, M26, M27, M28)	M7 - ACNF180816DD	
41	BT1392500	MOTOR MOUNT CLAMP (QTY 2)	M8 - ACNF180816DE	
51	B1392919	WASHER, 3/8 FENDER (QTY 4)	M9 - ACNF240016DC	
71	B1393804	NYLON LOCKNUT, .31-18 (QTY 4)	M10 - ACNF240516DD	
121	BT1393706	CARRIAGE BOLT .31 - 18 X .625" (QTY 4)	M11 - ACNF240616DD	
131	3614005	BLOWER DECK 10.75", LARGE (M19, M20, M21, M22, M23, M24, M25, M26, M27, M28)	M12 - ACNF240816DD	
131	3614003	BLOWER DECK 10.750", MED (M9, M10, M11, M12, M13, M14, M15, M16, M17, M18)	M13 - ACNF241016DD	
131	3614000	BLOWER DECK 8", SMALL (M1, M2, M3, M4, M5, M6, M7, M8)	M14 - ACNF250016AB	
141	3616000	MOTOR MOUNT BRACKET	M15 - ACNF250516AB	
151	3642000	VENTURI .375" (M1, M2, M3, M4, M5, M6, M7, M8)	M16 - ACNF250616AB	
151	3642001	VENTURI 0.5" (M9, M10, M11, M12, M13, M14, M15, M16, M17, M18, M19, M20, M21, M22, M23, M24, M25, M26, M27, M28)	M17 - ACNF250816AB	
161	3660200	BLOWER HOUSING (M1, M2, M3, M4, M5, M6, M7, M8)	M18 - ACNF251016AB	
161	3660201	BLOWER HOUSING (M9, M10, M11, M12, M13, M14, M15, M16, M17, M18, M19, M20, M21, M22, M23, M24, M25, M26, M27, M28)	M19 - ACNF300016DC	
171	3617000	MOTOR SHIELD	M20 - ACNF300516DD	
			M21 - ACNF300616DD	
			M22 - ACNF300816DD	
			M23 - ACNF301016DD	
			M24 - ACNF310016AB	
			M25 - ACNF310516AB	
			M26 - ACNF310616AB	
			M27 - ACNF310816AB	
			M28 - ACNF311016AB	

Coil/ Coil Pan/ Heater Assemblies

IMAGE 1

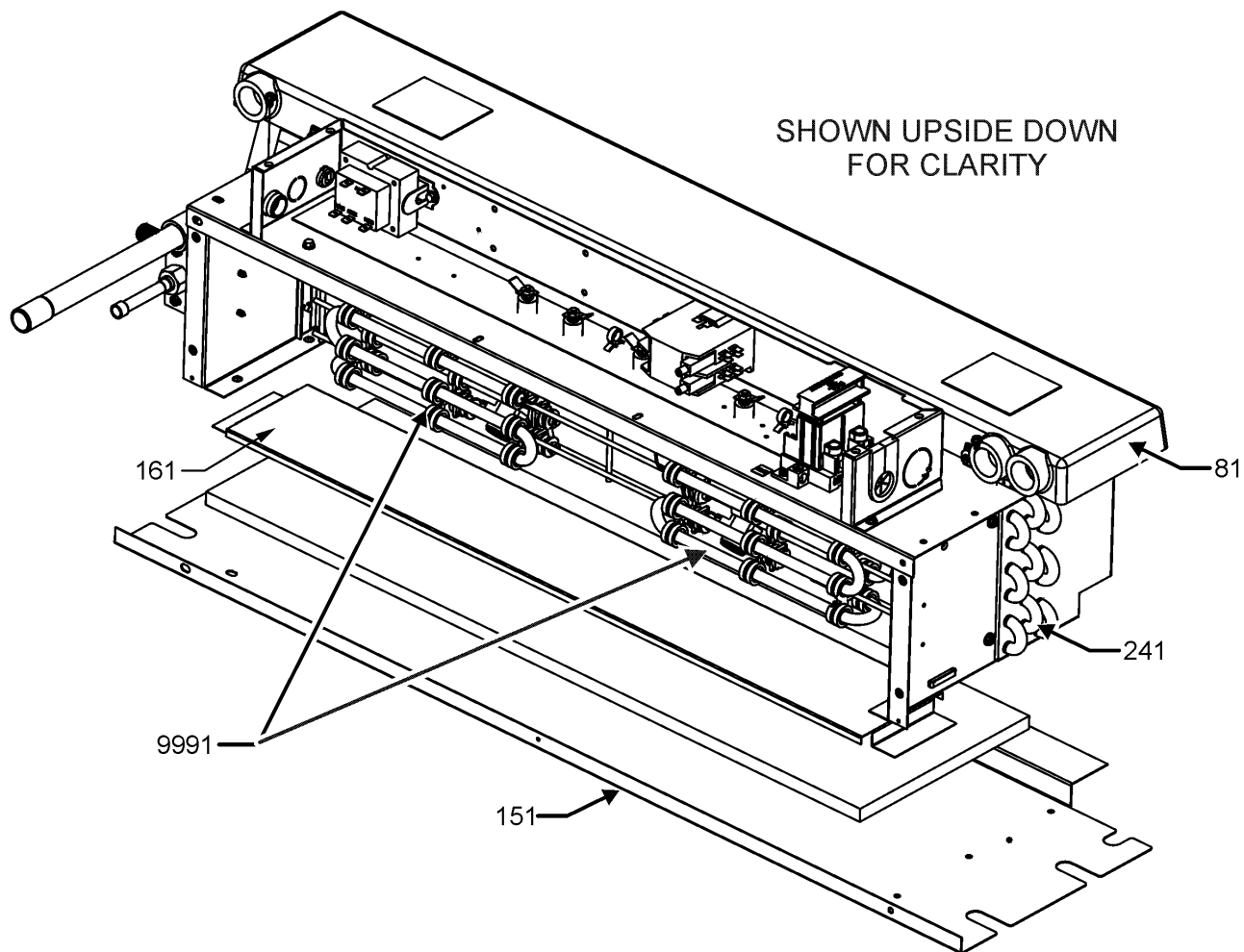
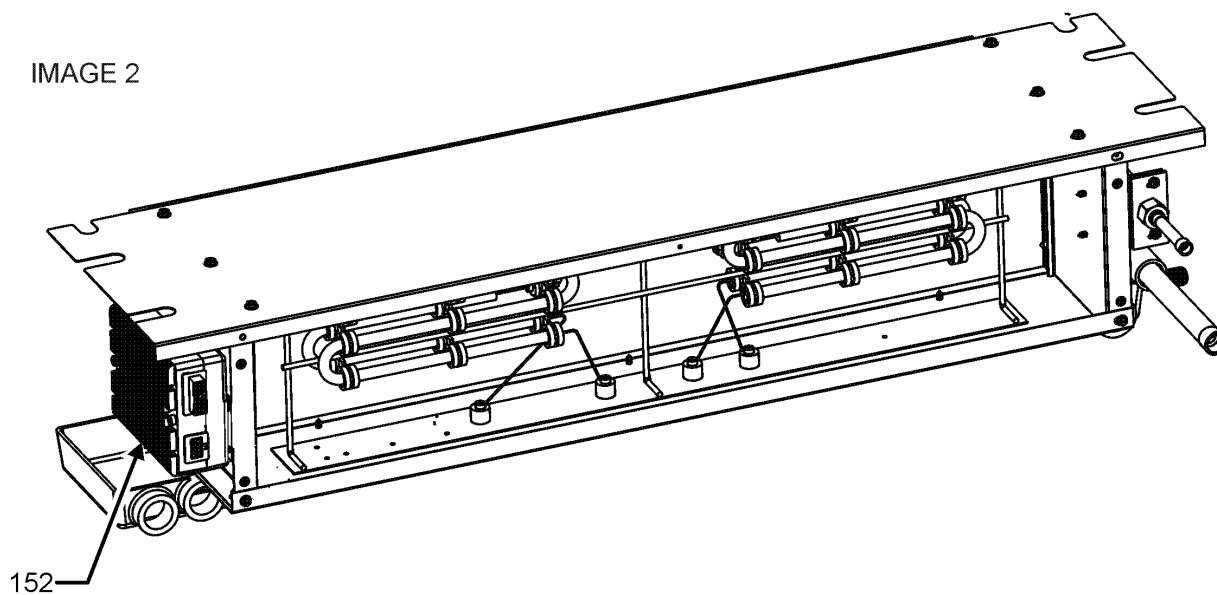


IMAGE 2



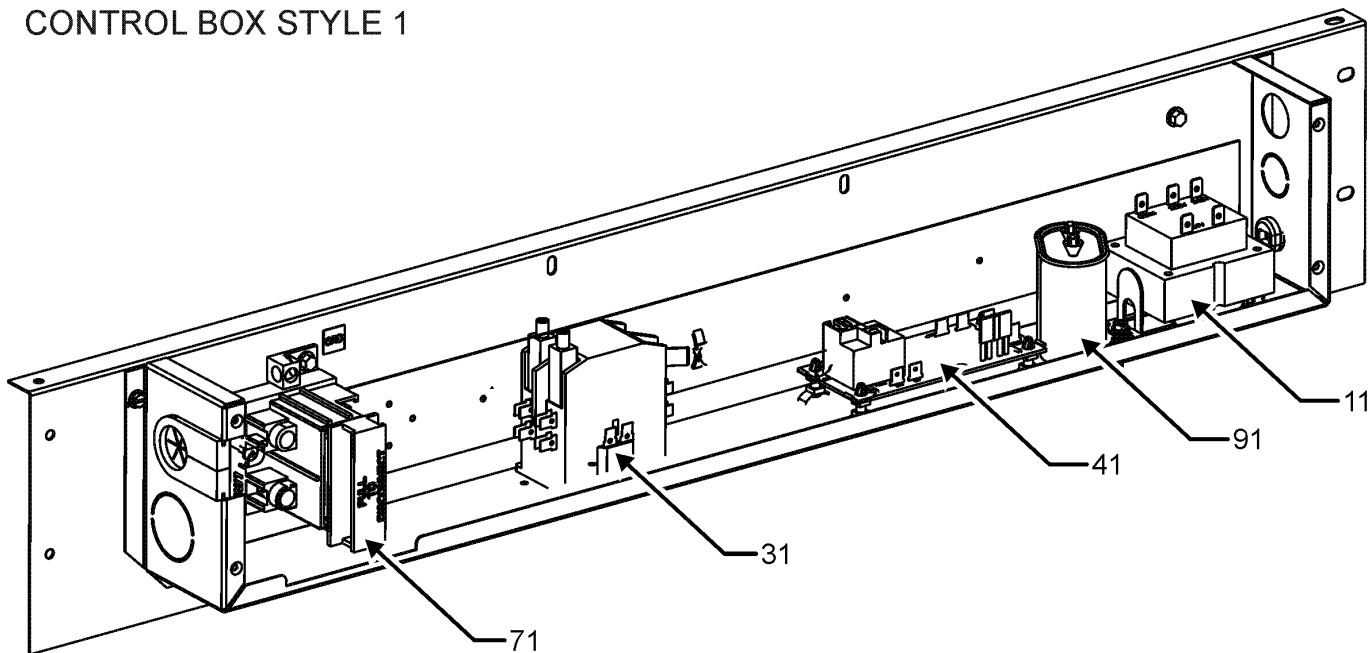
Coil/ Coil Pan/ Heater Assemblies

Ref. Part No: No:	Description:	Ref. Part No: No:	Description:
Image 1:		Expanded Model Nomenclature	
81	BT3076504DF	DRAINPAN, LARGE, FCA, ACHAC (M19, M20, M21, M22, M23, M24, M25, M26, M27, M28)	M1 - ACNF180016DC M2 - ACNF180016DD M3 - ACNF180516DD M4 - ACNF180516DE M5 - ACNF180616DD M6 - ACNF180616DE M7 - ACNF180816DD M8 - ACNF180816DE M9 - ACNF240016DC M10 - ACNF240516DD M11 - ACNF240616DD M12 - ACNF240816DD M13 - ACNF241016DD M14 - ACNF250016AB M15 - ACNF250516AB M16 - ACNF250616AB M17 - ACNF250816AB M18 - ACNF251016AB M19 - ACNF300016DC M20 - ACNF300516DD M21 - ACNF300616DD M22 - ACNF300816DD M23 - ACNF301016DD M24 - ACNF310016AB M25 - ACNF310516AB M26 - ACNF310616AB M27 - ACNF310816AB M28 - ACNF311016AB
81	BT3076503DF	DRAINPAN, MED, FCA, ACHAC (M9, M10, M11, M12, M13, M14, M15, M16, M17, M18)	
81	BT3076502DF	DRAINPAN, SML, FCA, ACHAC (M1, M2, M3, M4, M5, M6, M7, M8)	
151	3613000	EVAP TOP PANEL (M1, M2, M3, M4, M5, M6, M7, M8)	
151	3613001	EVAP TOP PANEL (M9, M10, M11, M12, M13, M14, M15, M16, M17, M18)	
151	3613002	EVAP TOP PANEL (M19, M20, M21, M22, M23, M24, M25, M26, M27, M28)	
161	3615000	EVAP COIL BLOCK-OFF (M1, M2, M3, M4, M5, M6, M7, M8)	
161	3615001	EVAP COIL BLOCK-OFF (M9, M10, M11, M12, M13, M14, M15, M16, M17, M18)	
161	3615002	EVAP COIL BLOCK-OFF (M19, M20, M21, M22, M23, M24, M25, M26, M27, M28)	
241	0270A01252	COIL TUBING ASSY (M1, M2, M3, M4, M5, M6, M7, M8)	
241	0270A01258	COIL TUBING ASSY (M9, M10, M11, M12, M13, M14, M15, M16, M17, M18)	
241	0270A01259	COIL TUBING ASSY (M19, M20, M21, M22, M23, M24, M25, M26, M27, M28)	
9991	0175A00000	HEAT ELEMENT 4.8 KW (M3, M4, M10, M15, M20, M25)	
9991	0175A00001	HEAT ELEMENT 6.0 KW (M5, M6, M11, M16, M21, M26)	
9991	0175A00002	HEAT ELEMENT 7.3 KW (M7, M8, M12, M17, M22, M27)	
9991	0175A00003	HEAT ELEMENT 9.8 KW (M13, M18, M23, M28)	
NS	0163M00175	CAP WITH O-RING	
NS	3631000	DRIP SHIELD, 1.5 & 2 TON (M1, M2, M3, M4, M5, M6, M7, M8)	
NS	3631001	DRIP SHIELD, 2.5 TON (M9, M10, M11, M12, M13, M14, M15, M16, M17, M18)	
NS	3631002	DRIP SHIELD, 3 TON (M19, M20, M21, M22, M23, M24, M25, M26, M27, M28)	
NS	3630005	EVAP SUPPORT ASSY LRG (M19, M20, M21, M22, M23, M24, M25, M26, M27, M28)	
NS	3630004	EVAP SUPPORT ASSY MED (M9, M10, M11, M12, M13, M14, M15, M16, M17, M18)	
NS	3630003	EVAP SUPPORT ASSY SML (M1, M2, M3, M4, M5, M6, M7, M8)	
NS	B1787000	VALVE CORE	
Image 2:			
152	0131M00779	ACNF25 BLDC CONTROLLER-1/4 HP (M14, M15, M16, M17, M18)	
152	0131M00780	ACNF31 BLDC CONTROLLER-1/4HP (M24, M25, M26, M27, M28)	

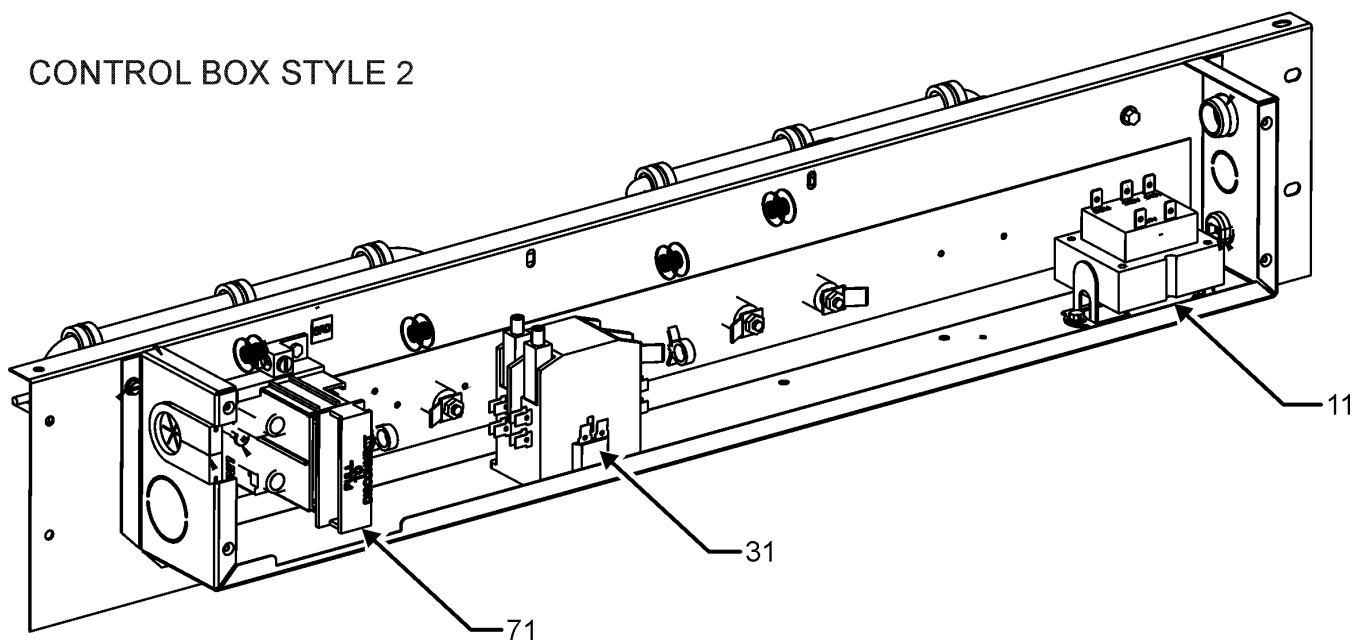
Control Box Assembly

SHOWN UPSIDE DOWN FOR CLARITY

CONTROL BOX STYLE 1



CONTROL BOX STYLE 2



Control Box Assembly

Ref. Part

No: No:

Description:

Ref. Part

No: No:

Description:

Image 1:

11	0130M00138	TRANSFORMER 208/230, 24V
31	CONT2P040024V	CONTACTOR 40 AMP, 2P, 24V (M3, M4, M5, M6, M7, M8, M10, M11, M12, M13, M15, M16, M17, M18, M20, M21, M22, M23, M25, M26, M27, M28)
41	PCBFM103	ELECTRONIC BLOWER TIME DELAY (M1, M2, M3, M4, M5, M6, M7, M8, M9, M10, M11, M12, M13, M19, M20, M21, M22, M23)
71	BT1753510	DISCONNECT, PULL OUT (M1, M2, M9, M14, M19, M24)
71	0130A00091	DISCONNECT, PULLOUT (M3, M4, M5, M6, M7, M8, M10, M11, M12, M13, M15, M16, M17, M18, M20, M21, M22, M23, M25, M26, M27, M28)
91	CAP050000370LA	CAPACITOR 5/370V (M1, M2, M3, M4, M5, M6, M7, M8, M9, M10, M11, M12, M13, M19, M20, M21, M22, M23)
NS	0159A00003	DOUBLE CRIMPED WIRE HARNESS (M14, M15, M16, M17, M18, M24, M25, M26, M27, M28)
NS	0130A00135	X13 LOW VOLTAGE WIRE HARNESS (M14, M15, M16, M17, M18, M24, M25, M26, M27, M28)
NS	0230M00002	X-13 POWER HARNESS (M14, M15, M16, M17, M18, M24, M25, M26, M27, M28)

Expanded Model Nomenclature

M1 - ACNF180016DC
 M2 - ACNF180016DD
 M3 - ACNF180516DD
 M4 - ACNF180516DE
 M5 - ACNF180616DD
 M6 - ACNF180616DE
 M7 - ACNF180816DD
 M8 - ACNF180816DE
 M9 - ACNF240016DC
 M10 - ACNF240516DD
 M11 - ACNF240616DD
 M12 - ACNF240816DD
 M13 - ACNF241016DD
 M14 - ACNF250016AB
 M15 - ACNF250516AB
 M16 - ACNF250616AB
 M17 - ACNF250816AB
 M18 - ACNF251016AB
 M19 - ACNF300016DC
 M20 - ACNF300516DD
 M21 - ACNF300616DD
 M22 - ACNF300816DD
 M23 - ACNF301016DD
 M24 - ACNF310016AB
 M25 - ACNF310516AB
 M26 - ACNF310616AB
 M27 - ACNF310816AB
 M28 - ACNF311016AB