

REPAIR PARTS

AWUF Air Handler

AWUF180316BD
AWUF180516BD
AWUF180816BD
AWUF190316AC
AWUF190516AC
AWUF190816AC
AWUF240316BD
AWUF240516BD
AWUF240816BD
AWUF241016BC
AWUF250316AC
AWUF250516AC
AWUF250816AC
AWUF251016AC
AWUF300516BE
AWUF300816BE
AWUF301016BE
AWUF310516AE
AWUF310816AD
AWUF321016AD
AWUF360516BE
AWUF360816BE
AWUF361016BE
AWUF370516BD
AWUF370816BD
AWUF371016BD



This manual is to be used by qualified technicians only.

© 2017 Goodman Manufacturing Company, L.P. ♦ 5151 San Felipe St., Suite 500 ♦ Houston, TX 77056

Important Information

Index

Functional Parts List	3
Illustration and Parts	4 - 11

Views shown are for parts illustrations only, not servicing procedures

Text Codes:

AR - As Required

NA - Not Available

NS - Not Shown

00000000 - See Note

QTY - Quantity Example (QTY 3) (If Quantity not shown, Quantity = 1)

M - Model Example (M1) (If M Code not shown, then part is used on all Models)

Expanded Model Nomenclature:

Example M1 - Model#1 M2 - Model#2 M3 - Model#3

Goodman Manufacturing Company, L.P. is not responsible for personal injury or property damage resulting from improper service. Review all service information before beginning repairs.

Warranty service must be performed by an authorized technician, using authorized factory parts. If service is required after the warranty expires, Goodman Manufacturing Company, L.P. also recommends contacting an authorized technician and using authorized factory parts.

Goodman Manufacturing Company, L.P. reserves the right to discontinue, or change at any time, specifications or designs without notice or without incurring obligations.

For assistance within the U.S.A. contact:

Homeowner Support

Goodman Manufacturing Company, L.P.

19001 Kermier Road

Waller, Texas 77484

877-254-4729-Telephone

713-863-2382-Facsimile

For assistance outside the U.S.A. contact:

International Division

Goodman Manufacturing Company, L.P.

19001 Kermier Road

Waller, Texas 77484

713-861-2500-Telephone

713-863-2382-Facsimile

Functional Parts

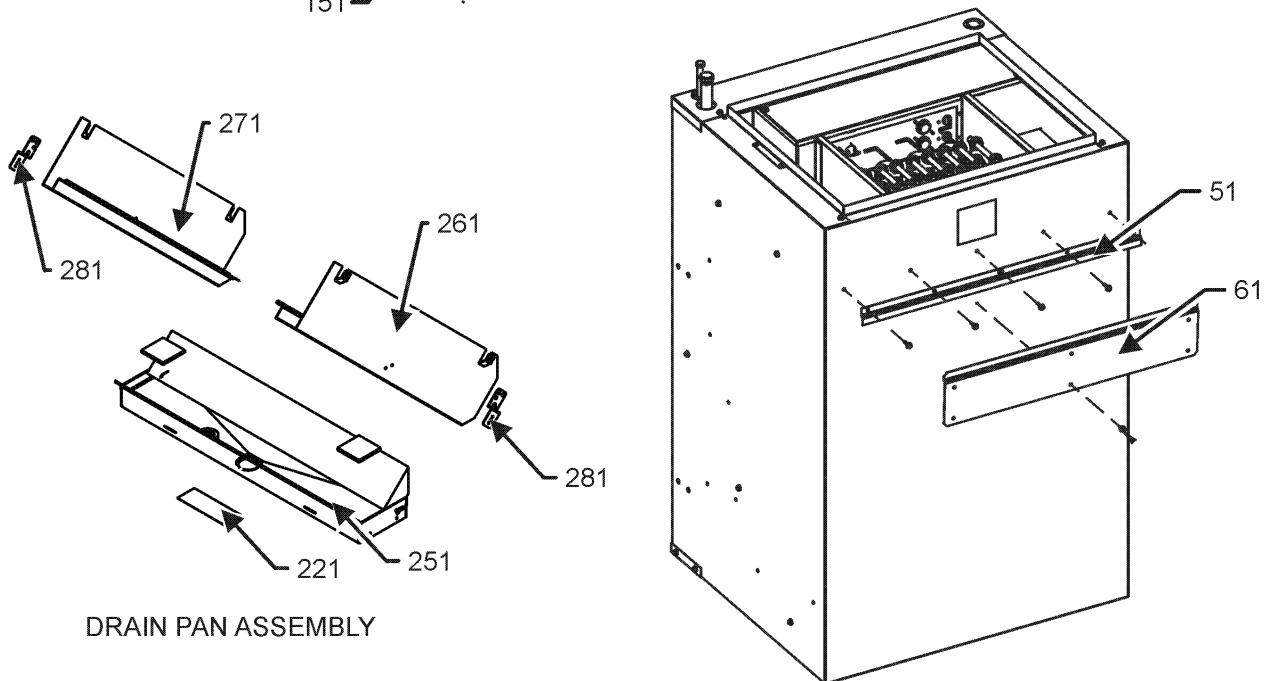
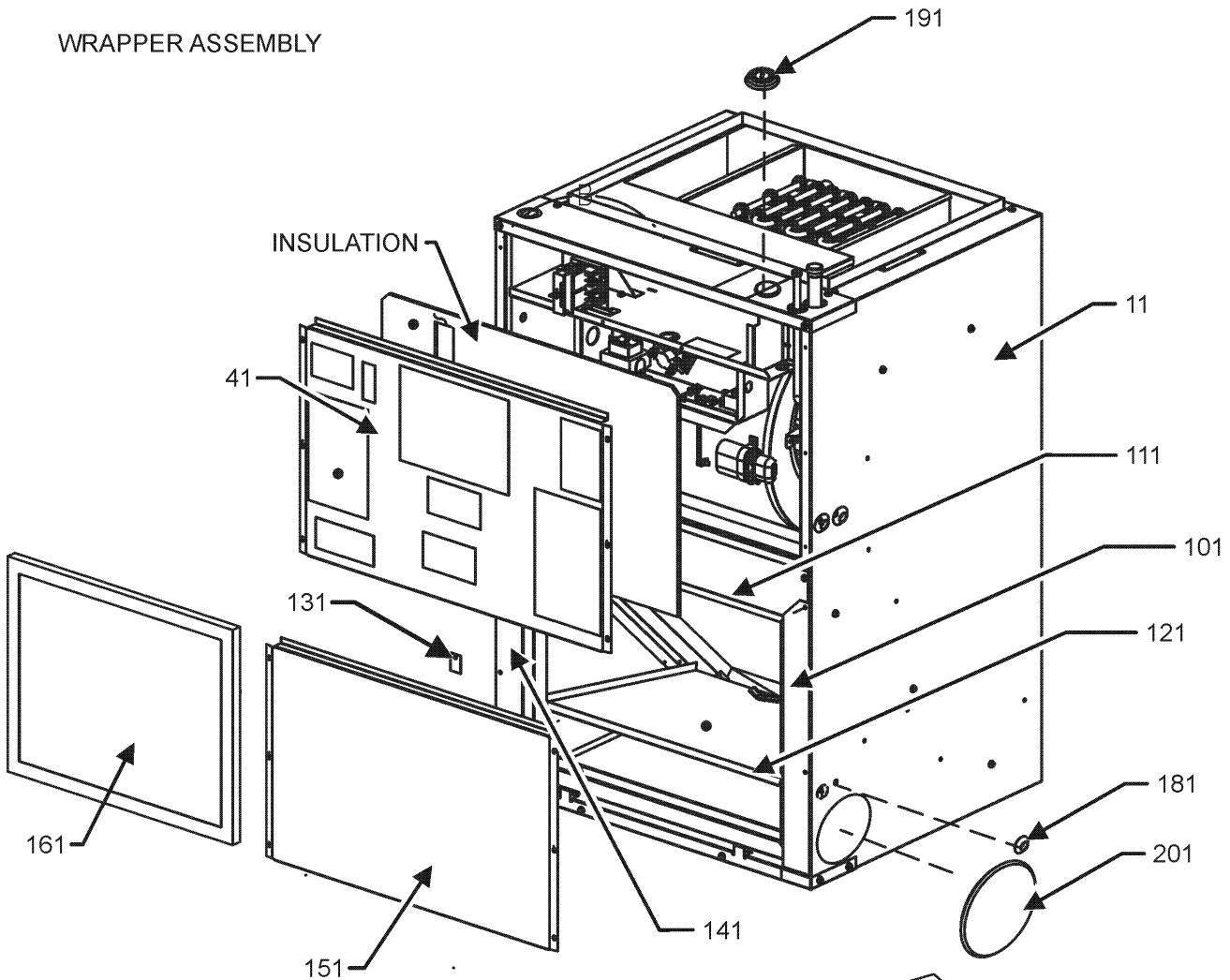
Part

No: Description:

		Expanded Model Nomenclature
BT1420028	ASM, HEATER(SMALL 3KW) (M1, M4, M7, M11)	M1 - AWUF180316BD
BT1420034	ASSY, 10 KW HEATER LRG (M17, M23)	M2 - AWUF180516BD
BT1420039	ASSY, 10 KW HEATER LRG (M20, M26)	M3 - AWUF180816BD
BT1420031	ASSY, 10 KW HEATER SML (M10)	M4 - AWUF190316AC
BT1420032	ASSY, 5 KW HEATER LRG (M15, M18, M21, M24)	M5 - AWUF190516AC
BT1420029	ASSY, 5 KW HEATER SML (M2, M5, M8, M12)	M6 - AWUF190816AC
BT1420030	ASSY, 7.3 KW HEATER SML (M3, M6, M9, M13, M14)	M7 - AWUF240316BD
BT1420040	ASSY, 8 KW HEATER LRG (M19, M25)	M8 - AWUF240516BD
BT1420033	ASSY, 8 KW HEATER LRG (M16, M22)	M9 - AWUF240816BD
BT1340030	BLOWER MOTOR 1/5 HP, 2 SP, 6 PL (M1, M2, M3, M7, M8, M9, M10)	M10 - AWUF241016BC
BT1340031	BLOWER MOTOR, 1/3HP, 2SP, 6PL (M15, M16, M17, M21, M22, M23)	M11 - AWUF250316AC
0131M00503	BLOWER MOTOR,1/2HP,SELECTECH PROGRAM (M24, M25, M26)	M12 - AWUF250516AC
0131M00501	BLOWER MOTOR,1/2HP,SELECTECH PROGRAM (M18)	M13 - AWUF250816AC
0131M00502	BLOWER MOTOR,1/2HP,SELECTECH PROGRAM (M19, M20)	M14 - AWUF251016AC
0131M00739	BLOWER MOTOR,1/3HP,BROAD OCEAN (M4, M5, M6, M11, M12, M13, M14)	M15 - AWUF300516BE
CAP075000370LA	CAPACITOR 7.5/370V (M1, M2, M3, M7, M8, M9, M10, M15, M16, M17, M21, M22, M23)	M16 - AWUF300816BE
CONT2P040024V	CONTACTOR 40 AMP, 2P, 24V	M17 - AWUF301016BE
PCBFM103	ELECTRONIC BLOWER TIME DELAY (M1, M2, M3, M7, M8, M9, M10, M15, M16, M17, M21, M22, M23)	M18 - AWUF310516AE
0130M00138	TRANSFORMER 208/230, 24V	M19 - AWUF310816AD
		M20 - AWUF321016AD
		M21 - AWUF360516BE
		M22 - AWUF360816BE
		M23 - AWUF361016BE
		M24 - AWUF370516BD
		M25 - AWUF370816BD
		M26 - AWUF371016BD

WRAPPER ASSEMBLY

WRAPPER ASSEMBLY



DRAIN PAN ASSEMBLY

WRAPPER ASSEMBLY

Ref. Part
No: No:

Description:

Ref. Part
No: No:

Description:

Image 1:

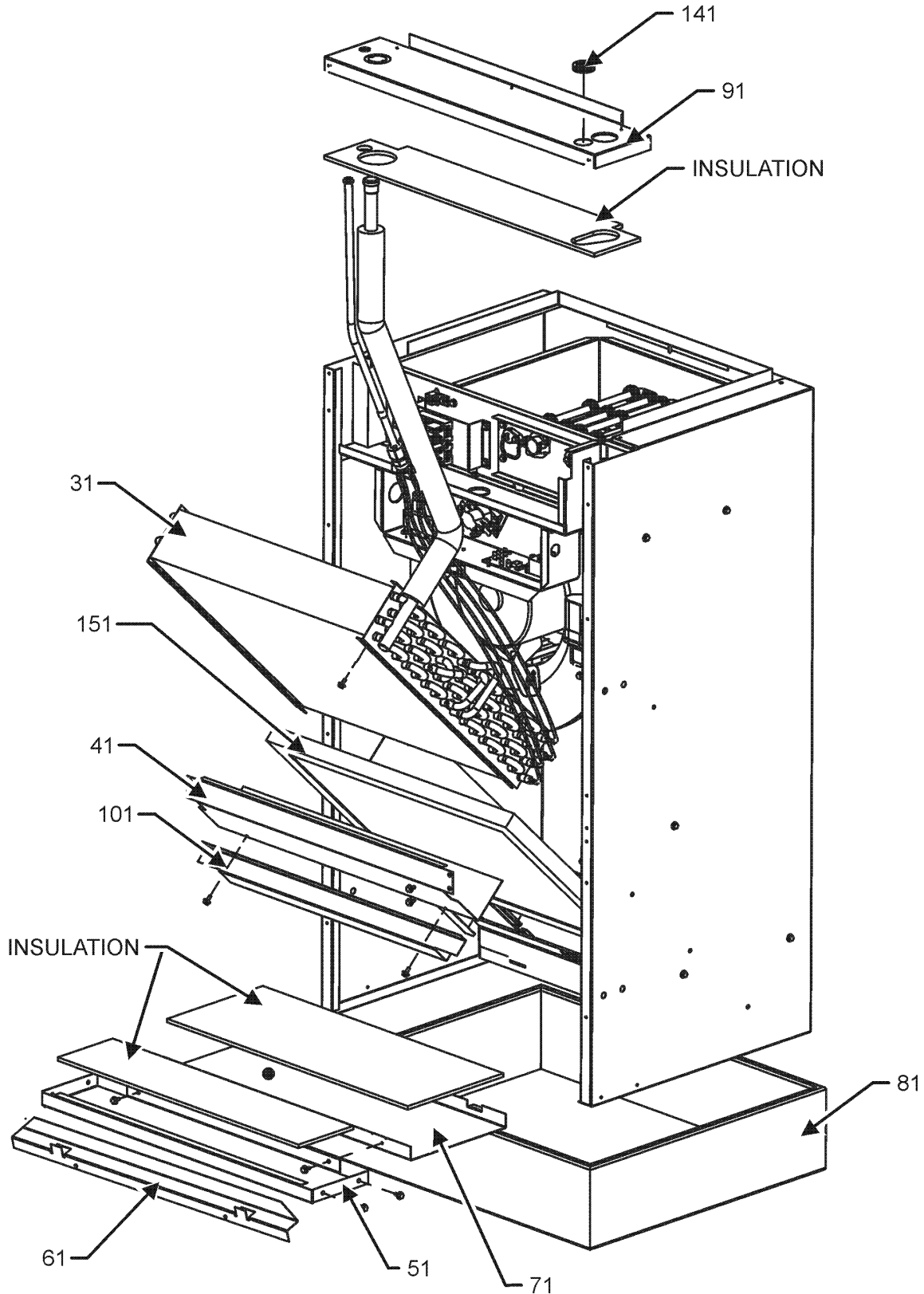
11	3702005	WRAPPER, LARGE (M15, M16, M17, M18, M19, M20, M21, M22, M23, M24, M25, M26)
11	3702004	WRAPPER, SMALL (M1, M2, M3, M4, M5, M6, M7, M8, M9, M10, M11, M12, M13, M14)
41	3701535	ACCESS PANEL, FRONT LRG (M15, M16, M17, M18, M19, M20, M21, M22, M23, M24, M25, M26)
41	0121A00450	PANEL, SMALL FRONT ACCESS (M1, M2, M3, M4, M5, M6, M7, M8, M9, M10, M11, M12, M13, M14)
51	3702500	HANGING BRACKET LRG (M15, M16, M17, M18, M19, M20, M21, M22, M23, M24, M25, M26)
51	3702501	HANGING BRACKET SML (M1, M2, M3, M4, M5, M6, M7, M8, M9, M10, M11, M12, M13, M14)
61	3702800	HANGING BRACKET, FIELD
101	0121A00041	BRKT, LEFT FILTER LRG (M15, M16, M17, M18, M19, M20, M21, M22, M23, M24, M25, M26)
111	0121A00042	BRKT, LRG TOP FILTER (M15, M16, M17, M18, M19, M20, M21, M22, M23, M24, M25, M26)
121	3701242	DRIP SHIELD LRG (M15, M16, M17, M18, M19, M20, M21, M22, M23, M24, M25, M26)
131	3701243	BKT, LRG RETAINER (M15, M16, M17, M18, M19, M20, M21, M22, M23, M24, M25, M26)
141	0121A00043	BRKT, RIGHT FILTER (M15, M16, M17, M18, M19, M20, M21, M22, M23, M24, M25, M26)
151	3701505	LOWER ACCESS PANEL-FRONT (M1, M2, M3, M4, M5, M6, M7, M8, M9, M10, M11, M12, M13, M14)
161	0160L00141	AIR FILTER 18X20X1 (M15, M16, M17, M18, M19, M20, M21, M22, M23, M24, M25, M26)
181	0161A00066	PLUG-BUTTON (QTY 8)
191	0161A00067	FLUSH PLUG
201	0161A00068	PLUG-BUTTON (QTY 2)
221	0128R00007	SHIELD, DRAINPAN
251	0161R00021	DRAIN PAN LARGE (M15, M16, M17, M18, M19, M20, M21, M22, M23, M24, M25, M26)
251	0161R00022	DRAIN PAN SMALL (M1, M2, M3, M4, M5, M6, M7, M8, M9, M10, M11, M12, M13, M14)
261	3701231	GUTTER RAIL, RIGHT LRG (M15, M16, M17, M18, M19, M20, M21, M22, M23, M24, M25, M26)
261	3701224	GUTTER RAIL, RIGHT SML (M1, M2, M3, M4, M5, M6, M7, M8, M9, M10, M11, M12, M13, M14)
271	3701232	GUTTER RAIL, LEFT LRG (M15, M16, M17, M18, M19, M20, M21, M22, M23, M24, M25, M26)
271	3701225	GUTTER RAIL, LEFT SML (M1, M2, M3, M4, M5, M6, M7, M8, M9, M10, M11, M12, M13, M14)
281	3701805	BRACKET, OFFSET (QTY 2)
NS	3701203	FILTER SUPPORT SML (M1, M2, M3, M4, M5, M6, M7, M8, M9, M10, M11, M12, M13, M14)

Expanded Model Nomenclature

M1 - AWUF180316BD
M2 - AWUF180516BD
M3 - AWUF180816BD
M4 - AWUF190316AC
M5 - AWUF190516AC
M6 - AWUF190816AC
M7 - AWUF240316BD
M8 - AWUF240516BD
M9 - AWUF240816BD
M10 - AWUF241016BC
M11 - AWUF250316AC
M12 - AWUF250516AC
M13 - AWUF250816AC
M14 - AWUF251016AC
M15 - AWUF300516BE
M16 - AWUF300816BE
M17 - AWUF301016BE
M18 - AWUF310516AE
M19 - AWUF310816AD
M20 - AWUF321016AD
M21 - AWUF360516BE
M22 - AWUF360816BE
M23 - AWUF361016BE
M24 - AWUF370516BD
M25 - AWUF370816BD
M26 - AWUF371016BD

EVAPORATOR COIL ASSEMBLY

EVAPORATOR COIL ASSEMBLY



EVAPORATOR COIL ASSEMBLY MAY DIFFER FROM WHAT IS SHOWN

EVAPORATOR COIL ASSEMBLY

Ref. Part
No: No:

Description:

Ref. Part
No: No:

Description:

Image 1:

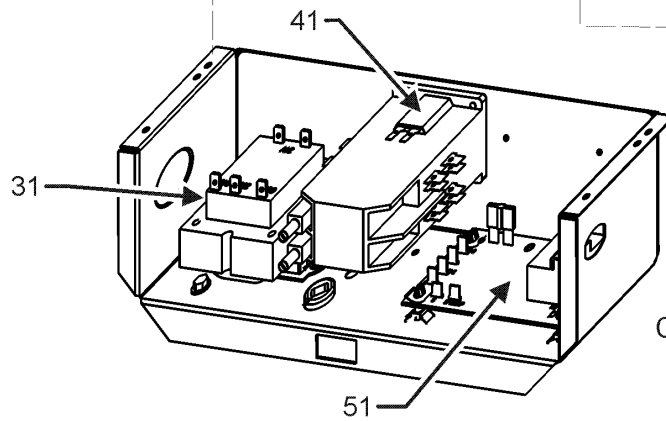
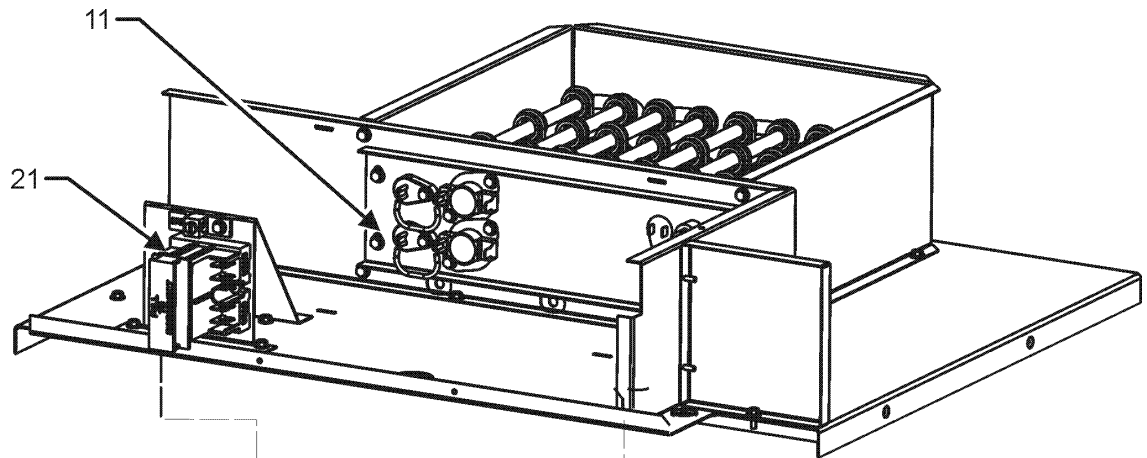
31	0270A01153	COIL TUBING ASSY (M24, M25, M26)
31	0270A01154	COIL TUBING ASSY (M1, M2, M3)
31	0270A01164	COIL TUBING ASSY (M4, M5, M6)
31	0270A01165	COIL TUBING ASSY (M7, M8, M9, M10)
31	0270A01166	COIL TUBING ASSY (M11, M12, M13, M14)
31	0270A01167	COIL TUBING ASSY (M15, M16, M17)
31	0270A01168	COIL TUBING ASSY (M18, M19, M20)
31	0270A01169	COIL TUBING ASSY (M21, M22, M23)
41	0121A00066	CENTER TIE PLATE (M15, M16, M17, M18, M19, M20, M21, M22, M23, M24, M25, M26)
41	0121A00067	CENTER TIE PLATE (M1, M2, M3, M4, M5, M6, M7, M8, M9, M10, M11, M12, M13, M14)
51	3702301	BOTTOM TIE PLATE LRG (M15, M16, M17, M18, M19, M20, M21, M22, M23, M24, M25, M26)
51	3702303	BOTTOM TIE PLATE SML (M1, M2, M3, M4, M5, M6, M7, M8, M9, M10, M11, M12, M13, M14)
61	0121A00040	BRKT, LOWER FILTER LRG (M15, M16, M17, M18, M19, M20, M21, M22, M23, M24, M25, M26)
71	3701500	ACCESS PANEL, DRAIN LRG (M15, M16, M17, M18, M19, M20, M21, M22, M23, M24, M25, M26)
71	3701502	ACCESS PANEL, DRAIN SML (M1, M2, M3, M4, M5, M6, M7, M8, M9, M10, M11, M12, M13, M14)
81	BT1700051	CAP; LG. AIR HANDLER BOTTOM (M15, M16, M17, M18, M19, M20, M21, M22, M23, M24, M25, M26)
81	BT1700050	CAP; SM. AIR HANDLER BOTTOM (M1, M2, M3, M4, M5, M6, M7, M8, M9, M10, M11, M12, M13, M14)
91	3702105	TOP WRAPPER LRG (M15, M16, M17, M18, M19, M20, M21, M22, M23, M24, M25, M26)
91	3702104	TOP WRAPPER SML (M1, M2, M3, M4, M5, M6, M7, M8, M9, M10, M11, M12, M13, M14)
101	3701802	FILTER OFFSET BRACKET SML (M1, M2, M3, M4, M5, M6, M7, M8, M9, M10, M11, M12, M13, M14)
141	0164A00002	GROMMET
151	0160L00139	Air Filter 14x18x1 (M1, M2, M3, M4, M5, M6, M7, M8, M9, M10, M11, M12, M13, M14)
NS	0163M00175	CAP WITH O-RING
NS	B1787000	VALVE CORE

Expanded Model Nomenclature

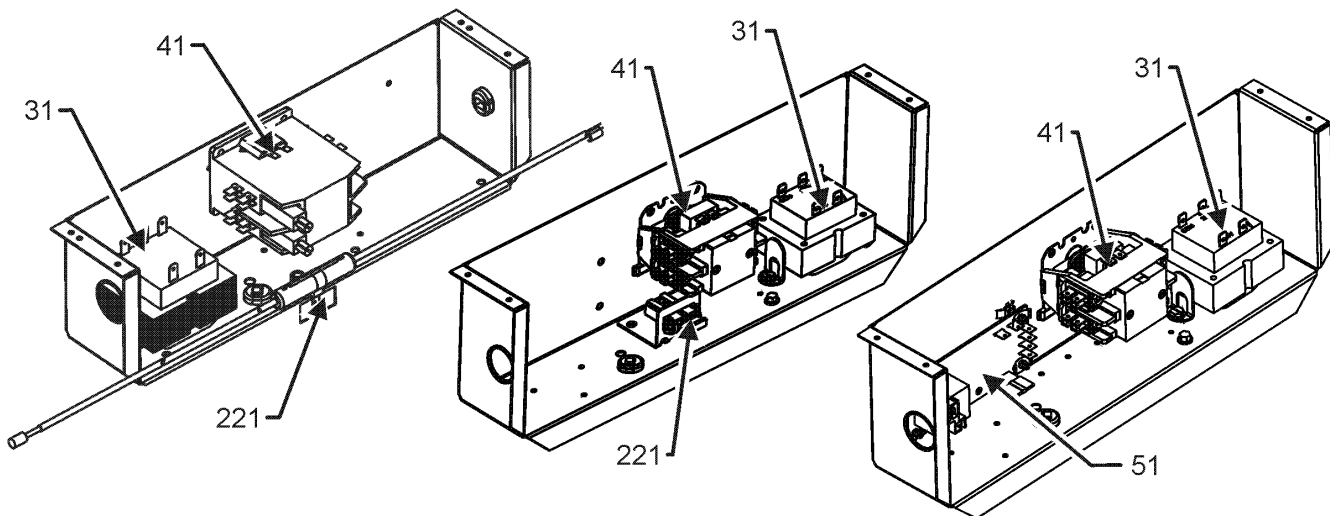
M1 - AWUF180316BD
M2 - AWUF180516BD
M3 - AWUF180816BD
M4 - AWUF190316AC
M5 - AWUF190516AC
M6 - AWUF190816AC
M7 - AWUF240316BD
M8 - AWUF240516BD
M9 - AWUF240816BD
M10 - AWUF241016BC
M11 - AWUF250316AC
M12 - AWUF250516AC
M13 - AWUF250816AC
M14 - AWUF251016AC
M15 - AWUF300516BE
M16 - AWUF300816BE
M17 - AWUF301016BE
M18 - AWUF310516AE
M19 - AWUF310816AD
M20 - AWUF321016AD
M21 - AWUF360516BE
M22 - AWUF360816BE
M23 - AWUF361016BE
M24 - AWUF370516BD
M25 - AWUF370816BD
M26 - AWUF371016BD

HEATER PANEL ASSEMBLY

HEATER PANEL ASSEMBLY



CONTROL PANEL ASSEMBLY



ALTERNATE CONTROL PANEL ASSEMBLIES

CONTROL PANEL ASSEMBLY MAY DIFFER FROM WHAT IS SHOWN

HEATER PANEL ASSEMBLY

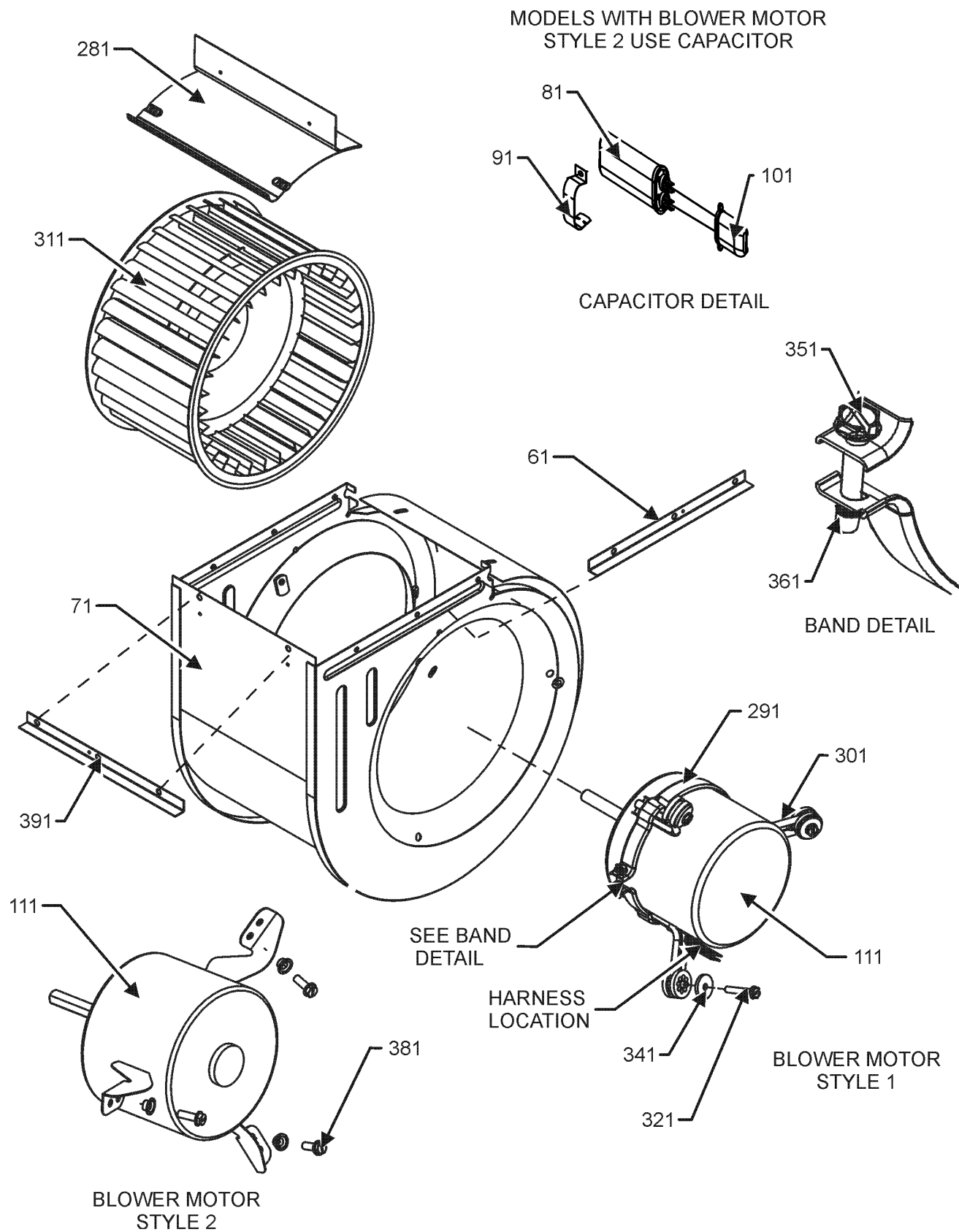
Ref. Part No: No:	Description:	Ref. Part No: No:	Description:
Image 1:			
11	BT1420028	ASM, HEATER(SMALL 3KW) (M1, M4, M7, M11)	
11	BT1420034	ASSY, 10 KW HEATER LRG (M17, M23)	
11	BT1420039	ASSY, 10 KW HEATER LRG (M20, M26)	
11	BT1420031	ASSY, 10 KW HEATER SML (M10)	
11	BT1420032	ASSY, 5 KW HEATER LRG (M15, M18, M21, M24)	
11	BT1420029	ASSY, 5 KW HEATER SML (M2, M5, M8, M12)	
11	BT1420030	ASSY, 7.3 KW HEATER SML (M3, M6, M9, M13, M14)	
11	BT1420033	ASSY, 8 KW HEATER LRG (M16, M22)	
11	BT1420040	ASSY, 8 KW HEATER LRG (M19, M25)	
21	0130A00091	DISCONNECT, PULL OUT	
31	0130M00138	TRANSFORMER 208/230, 24V	
41	CONT2P040024V	CONTACTOR 40 AMP, 2P, 24V	
51	PCBFM103	ELECTRONIC BLOWER TIME DELAY (M1, M2, M3, M7, M8, M9, M10, M15, M16, M17, M21, M22, M23)	
221	0130M00277	FUSE HOLDER (M4, M5, M6, M11, M12, M13, M14, M18, M20, M24, M25, M26)	
221	0161A00033	FUSE HOLDER (M19)	
NS	3701538	BKT, LRG DSCNCT MTG (M15, M16, M17, M18, M19, M20, M21, M22, M23, M24, M25, M26)	
NS	3701537	BKT, SML DSCNCT MTG (M1, M2, M3, M4, M5, M6, M7, M8, M9, M10, M11, M12, M13, M14)	

Expanded Model Nomenclature

M1 - AWUF180316BD
 M2 - AWUF180516BD
 M3 - AWUF180816BD
 M4 - AWUF190316AC
 M5 - AWUF190516AC
 M6 - AWUF190816AC
 M7 - AWUF240316BD
 M8 - AWUF240516BD
 M9 - AWUF240816BD
 M10 - AWUF241016BC
 M11 - AWUF250316AC
 M12 - AWUF250516AC
 M13 - AWUF250816AC
 M14 - AWUF251016AC
 M15 - AWUF300516BE
 M16 - AWUF300816BE
 M17 - AWUF301016BE
 M18 - AWUF310516AE
 M19 - AWUF310816AD
 M20 - AWUF321016AD
 M21 - AWUF360516BE
 M22 - AWUF360816BE
 M23 - AWUF361016BE
 M24 - AWUF370516BD
 M25 - AWUF370816BD
 M26 - AWUF371016BD

BLOWER ASSEMBLY

BLOWER ASSEMBLY



BLOWER ASSEMBLY

Ref. Part No: No:	Description:	Ref. Part No: No:	Description:
Image 1:		Image 1:	
61 3702702	BLOWER ANGLE 6.063" (M1, M2, M3, M4, M5, M6, M7, M8, M9, M10, M11, M12, M13, M14)	391 3702700	BLOWER ANGLE 9" (M1, M2, M3, M4, M5, M6, M7, M8, M9, M10, M11, M12, M13, M14)
61 3702701	BLOWER ANGLE 8.531" (M15, M16, M17, M18, M19, M20, M21, M22, M23, M24, M25, M26)	NS 0130A00112	MOTOR LOW VOLTAGE WIRE HARNESS (M6, M13, M14)
71 3760200	BLOWER HOUSING (M1, M2, M3, M4, M5, M6, M7, M8, M9, M10, M11, M12, M13, M14)	NS 0130A00113	MOTOR LOW VOLTAGE WIRE HARNESS (M4, M5, M11, M12)
71 3760202	BLOWER HOUSING (M15, M16, M17, M18, M19, M20, M21, M22, M23, M24, M25, M26)	NS 0130A00021	X-13 LOW VOLTAGE WIRE HARNESS (M18, M19, M20, M24, M25, M26)
81 CAP075000370LA	CAPACITOR 7.5/370V (M1, M2, M3, M7, M8, M9, M10, M15, M16, M17, M21, M22, M23)	NS 0130M00022	X-13 POWER HARNESS (M4, M5, M6, M11, M12, M13, M14, M18, M19, M20, M24, M25, M26)
91 3784800	CAPACITOR STRAP (M1, M2, M3, M7, M8, M9, M10, M15, M16, M17, M21, M22, M23)	Expanded Model Nomenclature	
101 B821700	CAPACITOR BOOT (M15, M16, M17, M21, M22, M23)	M1 - AWUF180316BD	
111 BT1340030	BLOWER MOTOR 1/5 HP, 2 SP, 6 PL (M1, M2, M3, M7, M8, M9, M10)	M2 - AWUF180516BD	
111 BT1340031	BLOWER MOTOR, 1/3HP, 2SP, 6PL (M15, M16, M17, M21, M22, M23)	M3 - AWUF180816BD	
111 0131M00501	BLOWER MOTOR, 1/2HP, SELECTECH PROGRAM (M18)	M4 - AWUF190316AC	
111 0131M00502	BLOWER MOTOR, 1/2HP, SELECTECH PROGRAM (M19, M20)	M5 - AWUF190516AC	
111 0131M00503	BLOWER MOTOR, 1/2HP, SELECTECH PROGRAM (M24, M25, M26)	M6 - AWUF190816AC	
111 0131M00739	BLOWER MOTOR, 1/3HP, BROAD OCEAN (M4, M5, M6, M11, M12, M13, M14)	M7 - AWUF240316BD	
281 3739000	BLOWER CUT-OFF 6" (M1, M2, M3, M4, M5, M6, M7, M8, M9, M10, M11, M12, M13, M14)	M8 - AWUF240516BD	
281 3739002	BLOWER CUT-OFF LRG (M15, M16, M17, M18, M19, M20, M21, M22, M23, M24, M25, M26)	M9 - AWUF240816BD	
291 0121M00038	MOTOR MOUNT BAND (M4, M5, M6, M11, M12, M13, M14, M18, M19, M20, M24, M25, M26)	M10 - AWUF241016BC	
301 B1376853	MOTOR MOUNT ARM (M4, M5, M6, M11, M12, M13, M14)	M11 - AWUF250316AC	
301 B1376861	MOTOR MOUNT ARM (M18, M19, M20, M24, M25, M26)	M12 - AWUF250516AC	
311 B1368034	BLOWER WHEEL 10 X 6 (M4, M5, M6, M7, M8, M9, M10, M11, M12, M13, M14)	M13 - AWUF250816AC	
311 B1368016	BLOWER WHEEL 10 X 8 (M18, M19, M20, M24, M25, M26)	M14 - AWUF251016AC	
311 B1368042	BLOWER WHEEL 9 X 6 (M1, M2, M3)	M15 - AWUF300516BE	
311 B1368036	BLOWER WHEEL 9 X 8 (M15, M16, M17, M21, M22, M23)	M16 - AWUF300816BE	
321 M0250565	TC SCREW 1.25" (M4, M5, M6, M11, M12, M13, M14, M18, M19, M20, M24, M25, M26)	M17 - AWUF301016BE	
341 B1392918	WASHER, FLAT 1/4 ID X 1 OD (M4, M5, M6, M11, M12, M13, M14, M18, M19, M20, M24, M25, M26)	M18 - AWUF310516AE	
351 B1393323	MACHINE SCREW HWH 1/4-20 X 1-1/2 BZ (M4, M5, M6, M11, M12, M13, M14, M18, M19, M20, M24, M25, M26)	M19 - AWUF310816AD	
361 B1393800	LOCKNUT, NYLON, INSERT 1/4, 20 (M4, M5, M6, M11, M12, M13, M14, M18, M19, M20, M24, M25, M26)	M20 - AWUF321016AD	
381 M0250558	TC SCREW (M1, M2, M3, M7, M8, M9, M10, M15, M16, M17, M21, M22, M23)	M21 - AWUF360516BE	
391 3702705	BLOWER ANGLE 10" (M15, M16, M17, M18, M19, M20, M21, M22, M23, M24, M25, M26)	M22 - AWUF360816BE	
		M23 - AWUF361016BE	
		M24 - AWUF370516BD	
		M25 - AWUF370816BD	
		M26 - AWUF371016BD	