

# REPAIR PARTS

---

## AWUF Electric Heat Air Handler

AWUF180316BE  
AWUF180516BE  
AWUF180816BE  
AWUF310516AF  
AWUF310816AE  
AWUF321016AE  
AWUF370516BE  
AWUF370816BE  
AWUF371016BE



This manual is to be used by qualified technicians only.

© 2021 Goodman Manufacturing Company, L.P. ♦ 5151 San Felipe St, Suite 500 ♦ Houston, TX 77056

## Important Information

---

### Index

Functional Parts List .....	3
Illustration and Parts .....	4 - 11

*Views shown are for parts illustrations only, not servicing procedures.*

#### Text Codes:

AR - As Required

NA - Not Available

NS - Not Shown

00000000 - See Note

QTY - Quantity    Example (QTY 3) (If Quantity not shown, Quantity = 1)

M - Model        Example (M1) (If M Code not shown, then part is used on all Models)

#### Expanded Model Nomenclature:

Example

M1 - Model#1

M2 - Model#2

M3 - Model#3

Goodman Manufacturing Company, L.P. is not responsible for personal injury or property damage resulting from improper service. Review all service information before beginning repairs.

Warranty service must be performed by an authorized technician, using authorized factory parts. If service is required after the warranty expires, Goodman Manufacturing Company, L.P. also recommends contacting an authorized technician and using authorized factory parts.

Goodman Manufacturing Company, L.P. reserves the right to discontinue, or change at any time, specifications or designs without notice or without incurring obligations.

For assistance within the U.S.A. contact:

Homeowner Support

Goodman Manufacturing Company, L.P.

19001 Kermier Road

Waller, Texas 77484

877-254-4729-Telephone

713-863-2382-Facsimile

For assistance outside the U.S.A. contact:

International Division

Goodman Manufacturing Company, L.P.

19001 Kermier Road

Waller, Texas 77484

713-861-2500-Telephone

713-863-2382-Facsimile

# Functional Parts

## Part

**No:**                      **Description:**

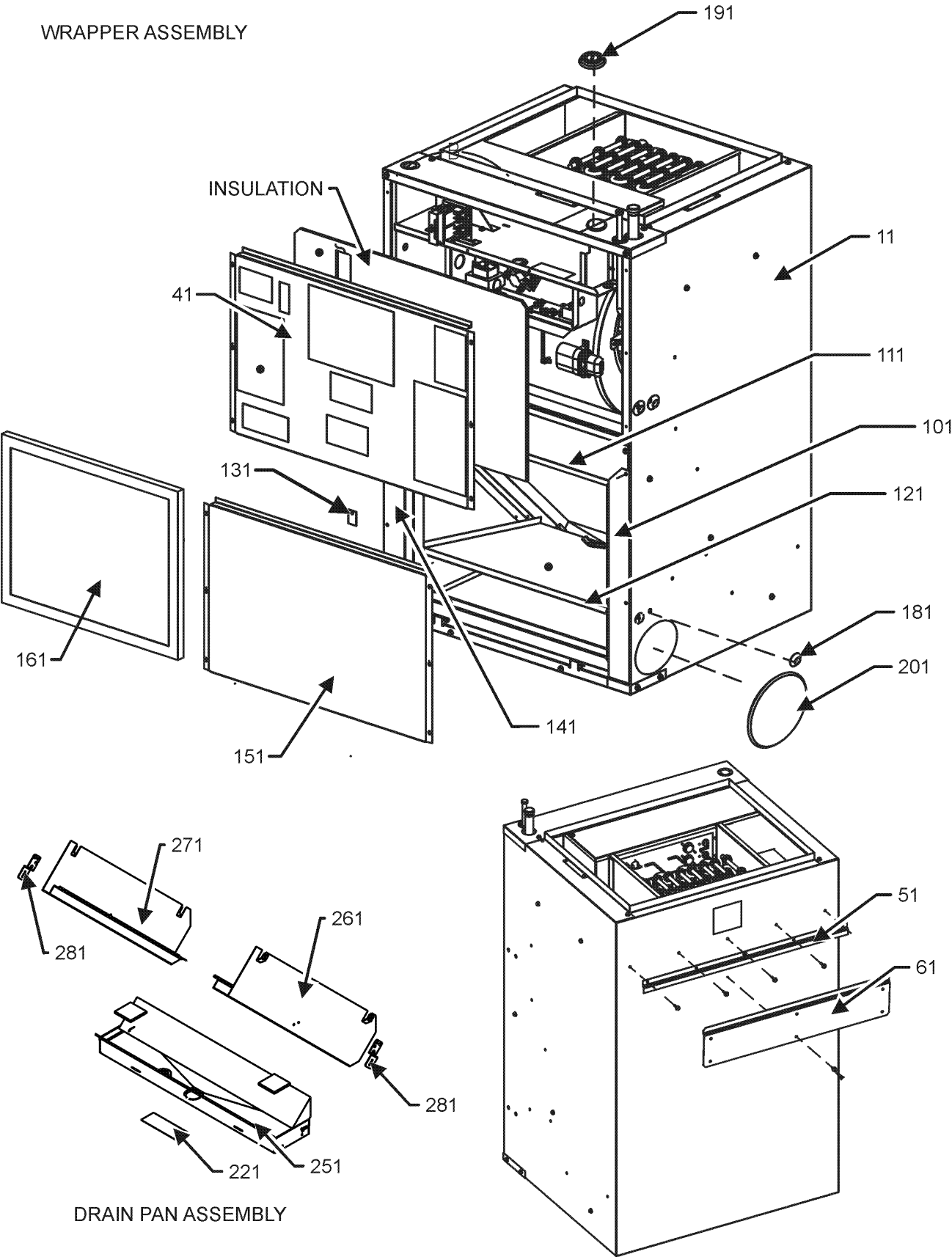
---

BT1420028	ASM, HEATER(SMALL 3KW) (M1)
CAP075000370LA	CAPACITOR 7.5/370V (M1, M2, M3)
CONT2P040024V	CONTACTOR 40 AMP, 2P, 24V
BT1420032	ELEMENT, 4.8 KW LARGE HEATER (M4, M7)
BT1420029	ELEMENT, 4.8 KW SMALL HEATER (M2)
BT1420030	ELEMENT, 7.3 KW SMALL HEATER (M3)
BT1420040	ELEMENT, 7.3KW HEATER (M5, M8)
BT1420039	ELEMENT, 9.8KW HEATER (M6, M9)
0131A00026	MOTOR, 1/5HP, 2SP,6PL (M1, M2, M3)
0131M01022	MOTOR-PROGRAMMED (M7, M8, M9)
0131M01021	MOTOR-PROGRAMMED (M5, M6)
0131M01020	MOTOR-PROGRAMMED (M4)
PCBFM103	PCB, TIME DELAY, EBTDR (M1, M2, M3)
0130M00138	TRANSFORMER, 208/230, 24V

### Expanded Model Nomenclature

M1 - AWUF180316BE
M2 - AWUF180516BE
M3 - AWUF180816BE
M4 - AWUF310516AF
M5 - AWUF310816AE
M6 - AWUF321016AE
M7 - AWUF370516BE
M8 - AWUF370816BE
M9 - AWUF371016BE

WRAPPER ASSEMBLY



# WRAPPER ASSEMBLY

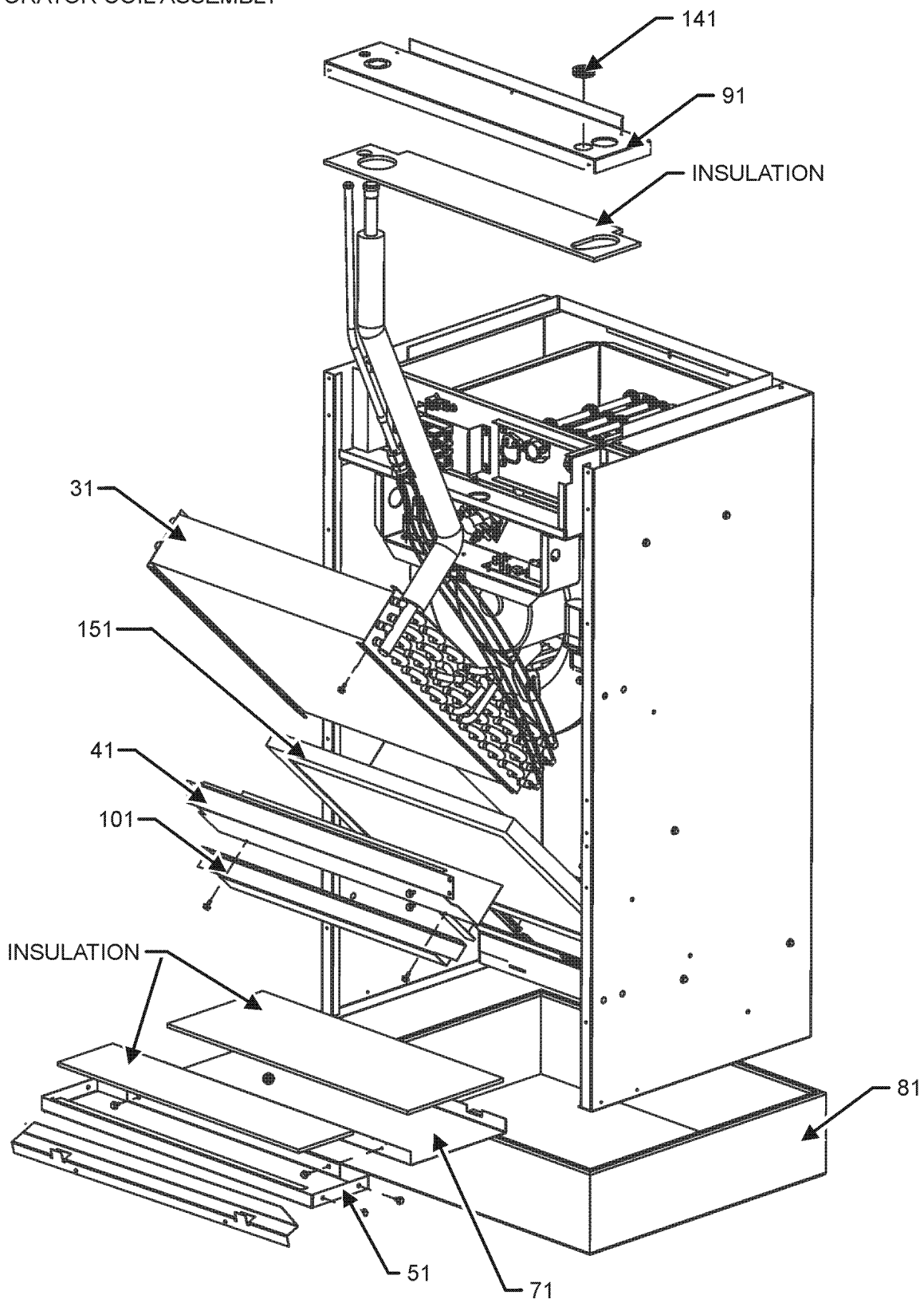
Ref. Part No: No:	Description:	Ref. Part No: No:	Description:
<b>Image 1:</b>			
11	3702005		WRAPPER, LARGE (M4, M5, M6, M7, M8, M9)
11	3702004		WRAPPER, SMALL (M1, M2, M3)
41	3701535		PANEL, LARGE FRONT ACCESS (M4, M5, M6, M7, M8, M9)
41	0121A00450		PANEL, SMALL FRONT ACCESS (M1, M2, M3)
51	3702500		HANGING BRACKET LRG (M4, M5, M6, M7, M8,
51	3702501		HANGING BRACKET SML (M1, M2, M3)
61	3702800		HANGING BRACKET, FIELD
101	0121A01301		BRKT, LEFT FILTER LRG (M4, M5, M6, M7, M8, M9)
111	0121A00042		BRKT, LRG TOP FILTER (M4, M5, M6, M7, M8, M9)
121	3701242		DRIP SHIELD LRG (M4, M5, M6, M7, M8, M9)
131	3701243		BKT, LRG RETAINER (M4, M5, M6, M7, M8, M9)
141	0121A01302		BRKT, RIGHT FILTER (M4, M5, M6, M7, M8, M9)
151	3701505		LOWER ACCESS PANEL-FRONT (M1, M2, M3)
161	0160L00139		AIR FILTER (M1, M2, M3)
161	0160L00388		AIR FILTER 18X20X1 (M4, M5, M6, M7, M8, M9)
181	0161A00068		PLUG-BUTTON (QTY 2)
191	0161A00067		FLUSH PLUG
201	0161A00068		PLUG-BUTTON (QTY 2)
221	0128R00007		SHIELD, DRAINPAN
251	0161R00021		DRAIN PAN LARGE (M4, M5, M6, M7, M8, M9)
251	0161R00022		DRAIN PAN SMALL (M1, M2, M3)
261	0121A01257		GUTTER RIGHT, WRAPPER ASSY (M4, M5, M6, M7, M8, M9)
261	0121A01259		GUTTER RIGHT, WRAPPER ASSY (M1, M2, M3)
271	0121A01258		GUTTER LEFT, WRAPPER ASSY (M4, M5, M6, M7, M8, M9)
271	0121A01260		GUTTER LEFT, WRAPPER ASSY (M1, M2, M3)
281	3701805		BRACKET, OFFSET (QTY 2)
NS	3701203		FILTER SUPPORT SML (M1, M2, M3)

## Expanded Model Nomenclature

M1 - AWUF180316BE
M2 - AWUF180516BE
M3 - AWUF180816BE
M4 - AWUF310516AF
M5 - AWUF310816AE
M6 - AWUF321016AE
M7 - AWUF370516BE
M8 - AWUF370816BE
M9 - AWUF371016BE

# EVAPORATOR COIL ASSEMBLY

## EVAPORATOR COIL ASSEMBLY



EVAPORATOR COIL ASSEMBLY MAY DIFFER FROM WHAT IS SHOWN

# EVAPORATOR COIL ASSEMBLY

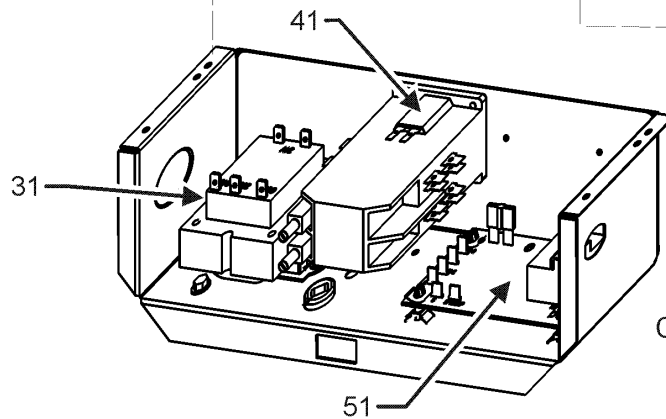
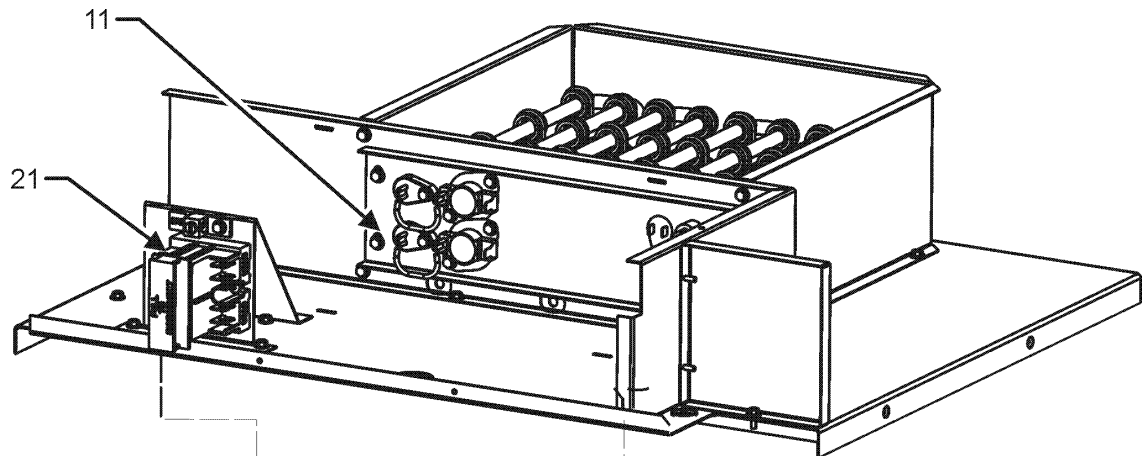
Ref. Part No: No:	Description:	Ref. Part No: No:	Description:
<b>Image 1:</b>			
31	0270A01153		COIL TUBING ASSY (M7, M8, M9)
31	0270A01154		COIL TUBING ASSY (M1, M2, M3)
31	0270A01168		COIL TUBING ASSY (M4, M5, M6)
41	0121A00067		PLATE, CENTER TIE (M1, M2, M3)
41	0121A01157		PLATE, CENTER TIE (M4, M5, M6, M7, M8, M9)
51	0121A01223		PLATE, BOTTOM TIE (M4, M5, M6, M7, M8, M9)
51	0121A01224		PLATE, BOTTOM TIE (M1, M2, M3)
71	3701500		ACCESS PANEL, DRAIN LRG (M4, M5, M6, M7, M8, M9)
71	3701502		ACCESS PANEL, DRAIN SML (M1, M2, M3)
81	BT1700051		CAP; LG. AIR HANDLER BOTTOM (M4, M5, M6, M7, M8, M9)
81	BT1700050		CAP; SM. AIR HANDLER BOTTOM (M1, M2, M3)
91	3702105		TOP WRAPPER LRG (M4, M5, M6, M7, M8, M9)
91	3702104		TOP WRAPPER SML (M1, M2, M3)
101	3701802		FILTER OFFSET BRACKET SML (M1, M2, M3)
141	0164A00002		GROMMET
151	0160L00139		AIR FILTER (M1, M2, M3)
151	0160L00388		AIR FILTER 18X20X1 (M4, M5, M6, M7, M8, M9)
NS	0163M00175		CAP WITH O-RING (M1, M2, M3)
NS	B1787000		VALVE CORE (M4, M5, M6, M7, M8, M9)

## Expanded Model Nomenclature

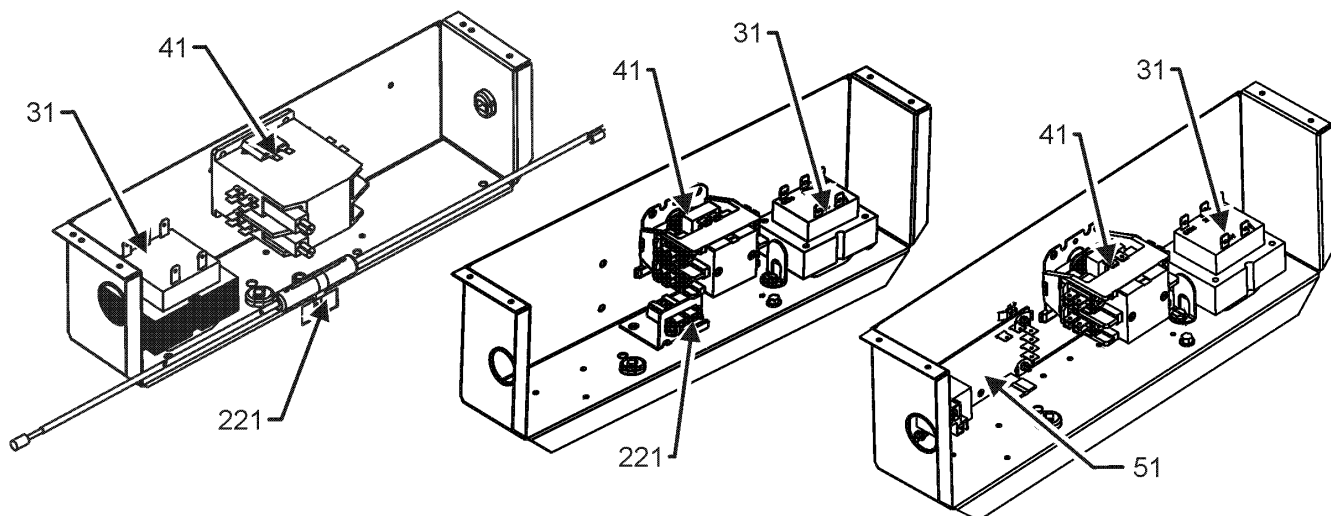
M1 - AWUF180316BE
M2 - AWUF180516BE
M3 - AWUF180816BE
M4 - AWUF310516AF
M5 - AWUF310816AE
M6 - AWUF321016AE
M7 - AWUF370516BE
M8 - AWUF370816BE
M9 - AWUF371016BE

# HEATER PANEL ASSEMBLY

## HEATER PANEL ASSEMBLY



CONTROL PANEL ASSEMBLY



ALTERNATE CONTROL PANEL ASSEMBLIES

CONTROL PANEL ASSEMBLY MAY DIFFER FROM WHAT IS SHOWN



# HEATER PANEL ASSEMBLY

Ref. Part No: No:	Description:	Ref. Part No: No:	Description:
----------------------	--------------	----------------------	--------------

## Image 1:

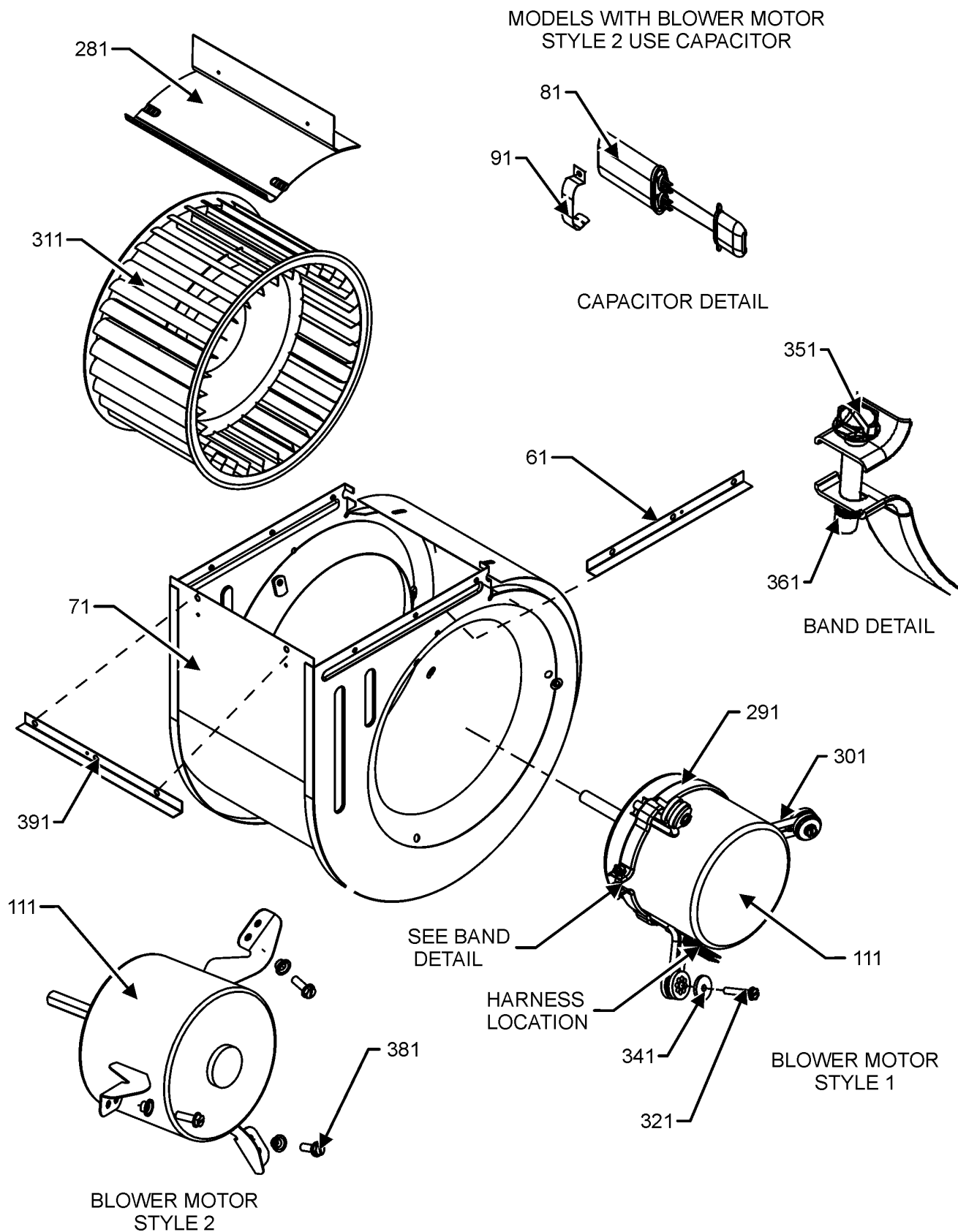
11	BT1420028	ASM, HEATER(SMALL 3KW) (M1)
11	BT1420032	ELEMENT, 4.8 KW LARGE HEATER (M4, M7)
11	BT1420029	ELEMENT, 4.8 KW SMALL HEATER (M2)
11	BT1420030	ELEMENT, 7.3 KW SMALL HEATER (M3)
11	BT1420040	ELEMENT, 7.3KW HEATER (M5, M8)
11	BT1420039	ELEMENT, 9.8KW HEATER (M6, M9)
21	0130A00091	DISCONNECT, PULL OUT
31	0130M00138	TRANSFORMER, 208/230, 24V
41	CONT2P040024V	CONTACTOR 40 AMP, 2P, 24V
51	PCBFM103	PCB, TIME DELAY, EBTDR (M1, M2, M3)
221	0130M00488	FUSE HOLDER (M4, M5, M6, M7, M8, M9)
NS	3701538	BKT, LRG DSCNCT MTG (M4, M5, M6, M7, M8, M9)
NS	3701537	BKT, SML DSCNCT MTG (M1, M2, M3)
NS	3701522	COLLAR, HEATER (M1, M2, M3)
NS	3701507	COLLAR, HTR. LG (M4, M5, M6, M7, M8, M9)

## Expanded Model Nomenclature

M1 - AWUF180316BE
M2 - AWUF180516BE
M3 - AWUF180816BE
M4 - AWUF310516AF
M5 - AWUF310816AE
M6 - AWUF321016AE
M7 - AWUF370516BE
M8 - AWUF370816BE
M9 - AWUF371016BE

# BLOWER ASSEMBLY

## BLOWER ASSEMBLY



# BLOWER ASSEMBLY

Ref. Part No: No:	Description:	Ref. Part No: No:	Description:
<b>Image 1:</b>			
61	3702702		BLOWER ANGLE 6.063" (M1, M2, M3)
61	3702701		BLOWER ANGLE 8.531" (M4, M5, M6, M7, M8, M9)
71	3760200		WELDMENT, BLWR HSG. (M1, M2, M3)
71	3760202		WELDMENT, BLWR HSG. (M4, M5, M6, M7, M8, M9)
81	CAP075000370LA		CAPACITOR 7.5/370V (M1, M2, M3)
91	3784800		CAPACITOR STRAP (M1, M2, M3)
111	0131A00026		MOTOR, 1/5HP, 2SP,6PL (M1, M2, M3)
111	0131M01020		MOTOR-PROGRAMMED (M4)
111	0131M01021		MOTOR-PROGRAMMED (M5, M6)
111	0131M01022		MOTOR-PROGRAMMED (M7, M8, M9)
281	3739000		BLOWER CUT-OFF 6" (M1, M2, M3)
281	3739002		BLOWER CUT-OFF LRG (M4, M5, M6, M7, M8, M9)
291	0121M00038		MOTOR MOUNT BAND (M4, M5, M6, M7, M8, M9)
301	B1376861		MOTOR MOUNT ARM (M4, M5, M6, M7, M8, M9)
311	B1368042		BLOWER WHEEL (9 X 6) (M1, M2, M3)
311	0150M00058		WHEEL, BLOWER (M4, M5, M6, M7, M8, M9)
321	M0250565		SCREW-TC 1.25" (M4, M5, M6, M7, M8, M9)
341	B1392918		WASHER, FLAT 1/4 ID X 1 OD (M4, M5, M6, M7, M8, M9)
351	B1393323		MACHINE SCREW HWH 1/4-20 X 1-1/2 BZ (M4, M5, M6, M7, M8, M9)
361	B1393800		LOCKNUT, NYLON, INSERT 1/4 (M4, M5, M6, M7, M8, M9)
381	M0250558		SCREW-TC H (M1, M2, M3)
391	3702705		BLOWER ANGLE 10" (M4, M5, M6, M7, M8, M9)
391	3702700		BLOWER ANGLE 9" (M1, M2, M3)
NS	0130A00021		X-13 LOW VOLTAGE WIRE HARNESS (M4, M5, M6, M7, M8, M9)
NS	0130M00022		X-13 POWER HARNESS (M4, M5, M6, M7, M8, M9)

## Expanded Model Nomenclature

M1 - AWUF180316BE
M2 - AWUF180516BE
M3 - AWUF180816BE
M4 - AWUF310516AF
M5 - AWUF310816AE
M6 - AWUF321016AE
M7 - AWUF370516BE
M8 - AWUF370816BE
M9 - AWUF371016BE