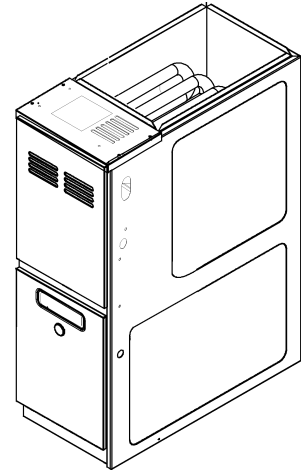




REPAIR PARTS

GMES 80% High Efficient Furnace

GMES800403ANAA
GMES800403AXAA
GMES800603ANAA
GMES800603AXAA
GMES800603BNAA
GMES800603BXAA
GMES800604BNAA
GMES800604BXAA
GMES800803BNAA
GMES800803BXAA
GMES800804BNAA
GMES800804BXAA
GMES800804CNAA
GMES800804CXAA
GMES800805CNAA
GMES800805CXAA
GMES801005CNAA
GMES801005CXAA
GMES801205DNAA



This manual is to be used by qualified technicians only.

© 2019 Goodman Manufacturing Company, L.P. ♦ 5151 San Felipe St, Suite 500 ♦ Houston, TX 77056

Important Information

Index

Functional Parts List	3
Illustration and Parts	4 - 9

Views shown are for parts illustrations only, not servicing procedures

Text Codes:

AR - As Required

NA - Not Available

NS - Not Shown

00000000 - See Note

QTY - Quantity Example (QTY 3) (If Quantity not shown, Quantity = 1)

M - Model Example (M1) (If M Code not shown, then part is used on all Models)

Expanded Model Nomenclature:

Example M1 - Model#1 M2 - Model#2 M3 - Model#3

Goodman Manufacturing Company, L.P. is not responsible for personal injury or property damage resulting from improper service. Review all service information before beginning repairs.

Warranty service must be performed by an authorized technician, using authorized factory parts. If service is required after the warranty expires, Goodman Manufacturing Company, L.P. also recommends contacting an authorized technician and using authorized factory parts.

Goodman Manufacturing Company, L.P. reserves the right to discontinue, or change at any time, specifications or designs without notice or without incurring obligations.

For assistance within the U.S.A. contact:

Homeowner Support

Goodman Manufacturing Company, L.P.

19001 Kermier Road

Waller, Texas 77484

877-254-4729-Telephone

713-863-2382-Facsimile

For assistance outside the U.S.A. contact:

International Division

Goodman Manufacturing Company, L.P.

19001 Kermier Road

Waller, Texas 77484

713-861-2500-Telephone

713-863-2382-Facsimile

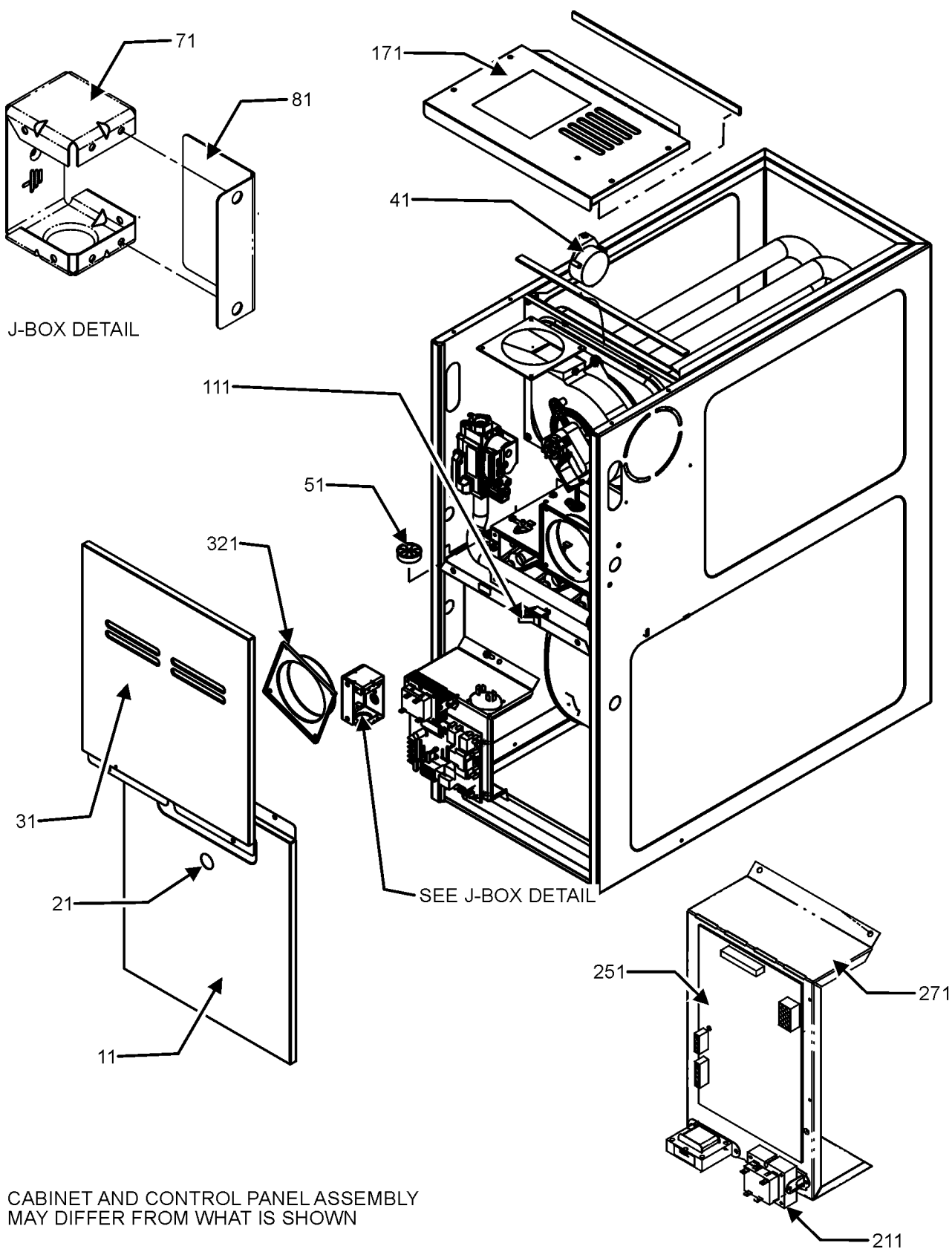
Functional Parts

Part

No: Description:

		Expanded Model Nomenclature
20162904	*PRIMARY LIMIT-TEMPERATURE CONTROL (M3, M4, M5, M6, M7, M8, M9, M10, M11, M12, M17, M18) *Refer to service bulletin SF-054	M1 - GMES800403ANAA M2 - GMES800403AXAA M3 - GMES800603ANAA M4 - GMES800603AXAA M5 - GMES800603BNAA M6 - GMES800603BXAA M7 - GMES800604BNAA M8 - GMES800604BXAA M9 - GMES800803BNAA M10 - GMES800803BXAA M11 - GMES800804BNAA M12 - GMES800804BXAA M13 - GMES800804CNAA M14 - GMES800804CXAA M15 - GMES800805CNAA M16 - GMES800805CXAA M17 - GMES801005CNAA M18 - GMES801005CXAA M19 - GMES801205DNAA
0130F00038	AUX LIMIT - LT BLUE 120°	
B1368034	BLOWER WHEEL 10 X 6 (M1, M2, M3, M4)	
PCBBF145	CIRCUIT BOARD	
0130F00010	FLAME SENSOR	
0151M00037	GAS VALVE	
10690402	INTERLOCK SWITCH	
20162903	LIMIT (M13, M14, M15, M16, M19)	
20162901	LIMIT (M1, M2)	
10123529	MANUAL RESET R.O.S. LIMIT (QTY 2)	
0131F00112	MOTOR X-13, BLOWER 1/2 H.P. (M1, M2, M3, M4, M5, M6, M9, M10)	
0131F00114	MOTOR X-13, BLOWER 1H.P. (M19)	
0131F00113	MOTOR X-13, BLOWER 3/4 H.P. (M7, M8, M11, M12, M13, M14, M15, M16, M17, M18)	
0131F00122	MOTOR, PROGRAM-X13 (M5, M6)	
0131F00121	MOTOR, PROGRAM-X13 (M3, M4)	
0131F00126	MOTOR, PROGRAM-X13 (M13, M14)	
0131F00129	MOTOR, PROGRAM-X13 (M19)	
0131F00120	MOTOR, PROGRAM-X13 (M1, M2)	
0131F00127	MOTOR, PROGRAM-X13 (M15, M16)	
0131F00125	MOTOR, PROGRAM-X13 (M11, M12)	
0131F00124	MOTOR, PROGRAM-X13 (M9, M10)	
0131F00123	MOTOR, PROGRAM-X13 (M7, M8)	
0131F00128	MOTOR, PROGRAM-X13 (M17, M18)	
0131M00002P	MOTOR, VENT 80+	
0130F00008	SINI IGNITOR	
0130F00505	SWITCH, PRESSURE (M1, M2, M9, M10, M11, M12, M17, M18)	
0130F00507	SWITCH, PRESSURE (M19)	
0130F00506	SWITCH, PRESSURE (M3, M4, M5, M6, M7, M8, M13, M14, M15, M16)	
0130M00140	TRANSFORMER,(120V TO 24V,40VA,	
0150M00042	WHEEL, BLOWER (10 X 10) (M13, M14, M15, M16, M17, M18)	
0150M00043	WHEEL, BLOWER (10 X 8) (M5, M6, M7, M8, M9, M10, M11, M12)	
0150M00043	WHEEL, BLOWER (10 X 8) (M5, M6, M7, M8, M9, M10, M11, M12)	
SPECIAL PARTS		
0161F00007	NAMEPLATE, GOODMAN	

Cabinet Assembly



CABINET AND CONTROL PANEL ASSEMBLY
MAY DIFFER FROM WHAT IS SHOWN

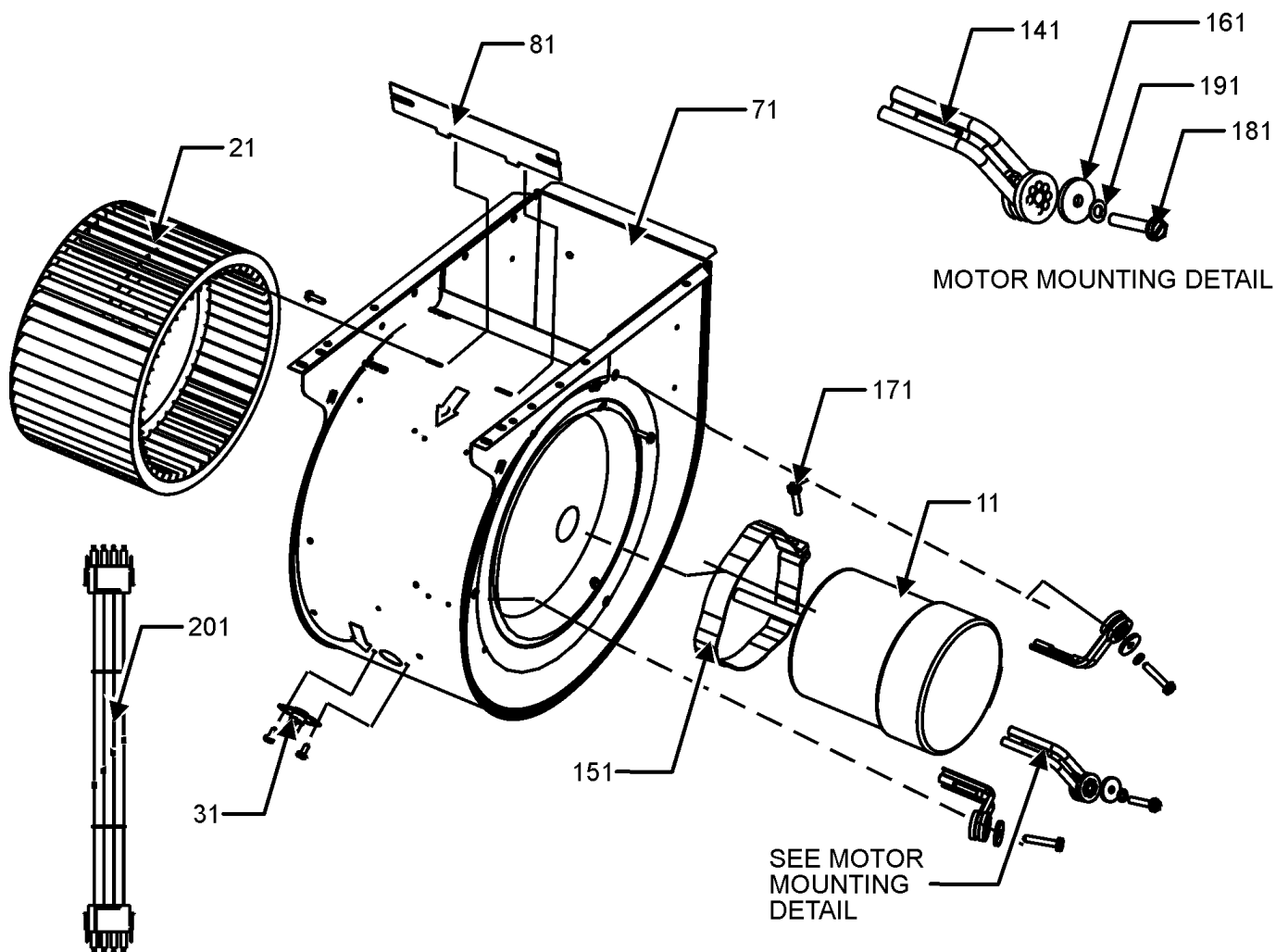
CONTROL PANEL ASSEMBLY

Cabinet Assembly

Ref. Part No: No:	Description:	Ref. Part No: No:	Description:
Image 1:		Expanded Model Nomenclature	
11	0121F00122DG	DOOR, BLOWER, 14"-PAINTED (M1, M2, M3, M4)	M1 - GMES800403ANAA
11	0121F00123DG	DOOR, BLOWER, 17.5"-PAINTED (M5, M6, M7, M8, M9, M10, M11, M12)	M2 - GMES800403AXAA
11	0121F00124DG	DOOR, BLOWER, 21"-PAINTED (M13, M14, M15, M16, M17, M18)	M3 - GMES800603ANAA
11	0121F00125DG	DOOR, BLOWER, 24.5"-PAINTED (M19)	M4 - GMES800603AXAA
21	B1392139	VIEW PORT BUSHING-BLOWER DOOR	M5 - GMES800603BNAA
31	0121F00118DG	DOOR CTRL ACCESS, 14"-PAINTED (M1, M2, M3, M4)	M6 - GMES800603BXAA
31	0121F00120DG	DOOR CTRL ACCESS, 21"-PAINTED (M13, M14, M15, M16, M17, M18)	M7 - GMES800604BNAA
31	0121F00119DG	DOOR CTRL ACCESS, 17.5"-PAINTED (M5, M6, M7, M8, M9, M10, M11, M12)	M8 - GMES800604BXAA
31	0121F00121DG	DOOR CTRL ACCESS, 24.5"-PAINTED (M19)	M9 - GMES800803BNAA
41	0130F00505	SWITCH, PRESSURE (M1, M2, M9, M10, M11, M12, M17, M18)	M10 - GMES800803BXAA
41	0130F00506	SWITCH, PRESSURE (M3, M4, M5, M6, M7, M8, M13, M14, M15, M16)	M11 - GMES800804BNAA
41	0130F00507	SWITCH, PRESSURE (M19)	M12 - GMES800804BXAA
51	B1392147	UNIVERSAL BUSHING WITH SLICE	M13 - GMES800804CNAA
71	4014502	J-BOX	M14 - GMES800804CXAA
81	4015502	COVER, J-BOX	M15 - GMES800805CNAA
111	10690402	INTERLOCK SWITCH	M16 - GMES800805CXAA
171	0121F00141DG	TOP, FURNACE 14"-PAINTED (M1, M2, M3, M4)	M17 - GMES801005CNAA
171	0121F00142DG	TOP, FURNACE 17.5"-PAINTED (M5, M6, M7, M8, M9, M10, M11, M12)	M18 - GMES801005CXAA
171	0121F00143DG	TOP, FURNACE 21"-PAINTED (M13, M14, M15, M16, M17, M18)	M19 - GMES801205DNAA
171	0121F00463DG	TOP, FURNACE 24.5" PAINTED (M19)	
211	0130M00140	TRANSFORMER, (120V TO 24V, 40VA,	
251	PCBBF145	CIRCUIT BOARD	
271	1815817	CNTRL MT PNL	
321	4023500	CHIMNEY TRANSITION TOP	
NS	0161F00007	NAMEPLATE, GOODMAN	

Blower Assembly

BLOWER ASSEMBLY



Blower Assembly

Ref. Part

No: No:

Description:

Ref. Part

No: No:

Description:

Image 1:

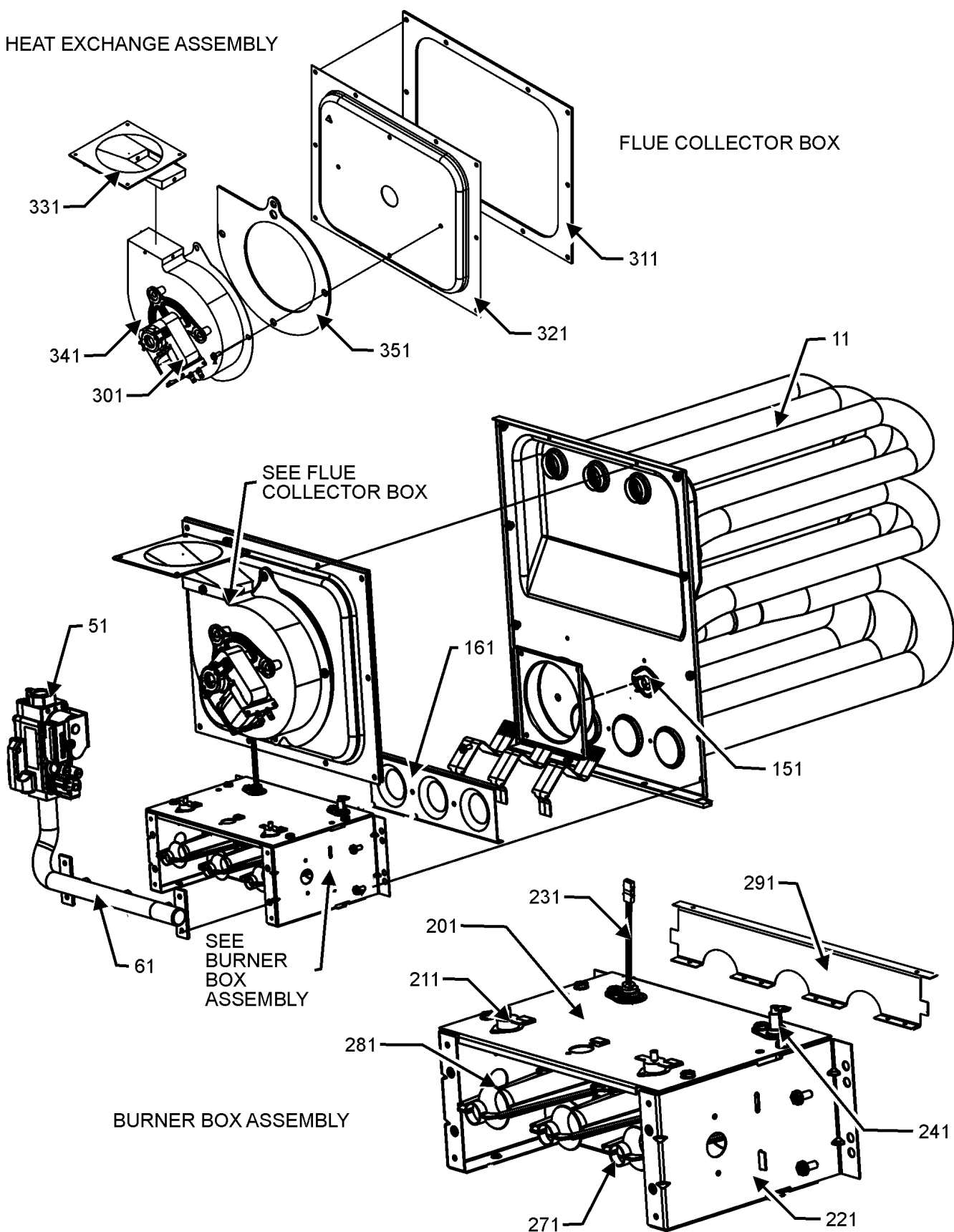
11	0131F00112	MOTOR X-13, BLOWER 1/2 H.P. (M1, M2, M3, M4, M5, M6, M9, M10)
11	0131F00114	MOTOR X-13, BLOWER 1H.P. (M19)
11	0131F00113	MOTOR X-13, BLOWER 3/4 H.P. (M7, M8, M11, M12, M13, M14, M15, M16, M17, M18)
21	B1368034	BLOWER WHEEL 10 X 6 (M1, M2, M3, M4)
21	0150M00042	WHEEL, BLOWER (10 X 10) (M13, M14, M15, M16, M17, M18)
21	0150M00043	WHEEL, BLOWER (10 X 8) (M5, M6, M7, M8, M9, M10, M11, M12)
21	0150M00043	WHEEL, BLOWER (10 X 8) (M5, M6, M7, M8, M9, M10, M11, M12)
31	0130F00038	AUX LIMIT - LT BLUE 120°
71	2539307	BLOWER HOUSING 10 X 10 (M13, M14, M15, M16, M17, M18, M19)
71	2539305	BLOWER HOUSING 10 X 6 (M1, M2, M3, M4)
71	2539306	BLOWER HOUSING 10 X 8 (M5, M6, M7, M8, M9, M10, M11, M12)
81	764741	BLOWER BLOCK-OFF 10 X 10 (M13, M14, M15, M16, M17, M18, M19)
81	764740	BLOWER BLOCK-OFF 10 X 8 (M5, M6, M7, M8, M9, M10, M11, M12)
81	764739	BLOWER CUT-OFF 10 X 6 (M1, M2, M3, M4)
141	B1376863	MOUNT ARM, MOTOR (HEAVY DUTY) (QTY 3)
151	0121M00039	MOUNT BAND, MOTOR (HEAVY DUTY)
161	B1392918	WASHER FLAT 1/4 ID X 1 OD (QTY 3)
171	0163M00320	HEX HEAD ALL THREAD TAP BOLT
181	M0250565	SCREW-TC 1.25" (QTY 3)
191	B1393800	LOCKNUT NYLON INSERT 1/4,20
201	0159F00076	WIRING HARNESS
NS	0131F00120	MOTOR, PROGRAM-X13 (M1, M2)
NS	0131F00121	MOTOR, PROGRAM-X13 (M3, M4)
NS	0131F00122	MOTOR, PROGRAM-X13 (M5, M6)
NS	0131F00123	MOTOR, PROGRAM-X13 (M7, M8)
NS	0131F00124	MOTOR, PROGRAM-X13 (M9, M10)
NS	0131F00125	MOTOR, PROGRAM-X13 (M11, M12)
NS	0131F00126	MOTOR, PROGRAM-X13 (M13, M14)
NS	0131F00127	MOTOR, PROGRAM-X13 (M15, M16)
NS	0131F00128	MOTOR, PROGRAM-X13 (M17, M18)
NS	0131F00129	MOTOR, PROGRAM-X13 (M19)

Expanded Model Nomenclature

M1 - GMES800403ANAA
M2 - GMES800403AXAA
M3 - GMES800603ANAA
M4 - GMES800603AXAA
M5 - GMES800603BNAA
M6 - GMES800603BXAA
M7 - GMES800604BNAA
M8 - GMES800604BXAA
M9 - GMES800803BNAA
M10 - GMES800803BXAA
M11 - GMES800804BNAA
M12 - GMES800804BXAA
M13 - GMES800804CNAA
M14 - GMES800804CXAA
M15 - GMES800805CNAA
M16 - GMES800805CXAA
M17 - GMES801005CNAA
M18 - GMES801005CXAA
M19 - GMES801205DNAA

Heat Exchange Assembly

HEAT EXCHANGE ASSEMBLY



Heat Exchange Assembly

Ref. Part No: No:	Description:		Ref. Part No: No:	Description:	
Image 1:			Image 1:		
11	0270F00900	HEAT EXCHANGER ASSY (M1, M2)	321	0121F00128	COLLECTOR BOX 17.5" 1.75 DIA (M5, M6, M7, M8, M9, M10, M11, M12)
11	0270F00901	HEAT EXCHANGER ASSY (M3, M4)	321	0121F00198	COLLECTOR BOX, 14" 1.75 DIA (M3, M4)
11	0270F00902	HEAT EXCHANGER ASSY (M9, M10, M11, M12)	331	0128F00006	CHIMNEY TRANSITION BOTTOM
11	0270F00903	HEAT EXCHANGER ASSY (M17, M18)	341	0131M00002P	MOTOR, VENT 80+
11	0270F00904	HEAT EXCHANGER ASSY (M19)	351	0154F00003	GASKET-14 INCH (M1, M2, M3, M4)
11	0270F00929	HEAT EXCHANGER ASSY (M5, M6, M7, M8)	351	0154F00004	GASKET-17.5 INCH (M5, M6, M7, M8, M9, M10, M11, M12)
11	0270F00930	HEAT EXCHANGER ASSY (M13, M14, M15, M16)	351	0154F00005	GASKET-21 INCH (M13, M14, M15, M16, M17, M18)
51	0151M00037	GAS VALVE	351	0154F00006	GASKET-24.5 INCH (M19)
61	0120F00006	MANIFOLD (M1, M2)	NS	0259F00054	HARNESS, WIRE ASSY 12 PIN (80%)
61	0120F00007	MANIFOLD (M3, M4, M5, M6, M7, M8)	NS	0159F00099	WIRE HARNESS ASSY, IGNITOR
61	0120F00008	MANIFOLD (M9, M10, M11, M12, M13, M14, M15, M16)	NS	0259F00078	WIRE KIT ASSY.
61	0120F00009	MANIFOLD (M17, M18)	NS	0159F00076	WIRING HARNESS
61	0120F00010	MANIFOLD (M19)			
151	20162904	*PRIMARY LIMIT-TEMPERATURE CONTROL (M3, M4, M5, M6, M7, M8, M9, M10, M11, M12, M17, M18) *Refer to service bulletin SF-054	Expanded Model Nomenclature		
151	20162901	LIMIT (M1, M2)	M1 - GMES800403ANAA		
151	20162903	LIMIT (M13, M14, M15, M16, M19)	M2 - GMES800403AXAA		
161	4028000	ORIFICE PLATE, 2CELL (M1, M2)	M3 - GMES800603ANAA		
161	4028001	ORIFICE PLATE, 3CELL (M3, M4, M5, M6, M7, M8)	M4 - GMES800603AXAA		
161	4028002	ORIFICE PLATE, 4 CELL (M9, M10, M11, M12, M13, M14, M15, M16)	M5 - GMES800603BNAA		
161	4028003	ORIFICE PLATE, 5CELL (M17, M18)	M6 - GMES800603BXAA		
161	4028004	ORIFICE PLATE, 6CELL (M19)	M7 - GMES800604BNAA		
201	0121F00162	TOP, BURNER BOX 2 CELL (M1, M2)	M8 - GMES800604BXAA		
201	0121F00163	TOP, BURNER BOX 3 CELL (M3, M4, M5, M6, M7, M8)	M9 - GMES800803BNAA		
201	0121F00164	TOP, BURNER BOX 4 CELL (M9, M10, M11, M12, M13, M14, M15, M16)	M10 - GMES800803BXAA		
201	0121F00165	TOP, BURNER BOX 5 CELL (M17, M18)	M11 - GMES800804BNAA		
201	0121F00166	TOP, BURNER BOX 6 CELL (M19)	M12 - GMES800804BXAA		
211	10123529	MANUAL RESET R.O.S. LIMIT (QTY 2)	M13 - GMES800804CNAA		
221	0121F00146	SIDE PLATE BURNER BOX (QTY 2)	M14 - GMES800804CXAA		
231	0130F00008	SINI IGNITOR	M15 - GMES800805CNAA		
241	0130F00010	FLAME SENSOR	M16 - GMES800805CXAA		
271	10716005	ORIFICE (QTY 2)	M17 - GMES801005CNAA		
281	B4022700	INSHOT BURNER ASSY 3" (QTY 2)	M18 - GMES801005CXAA		
291	0121F00167	BURNER RACK, 2 CELL (M1, M2)	M19 - GMES801205DNAA		
291	0121F00168	BURNER RACK, 3 CELL (M3, M4, M5, M6, M7, M8)			
291	0121F00169	BURNER RACK, 4 CELL (M9, M10, M11, M12, M13, M14, M15, M16)			
291	0121F00170	BURNER RACK, 5 CELL (M17, M18)			
291	0121F00171	BURNER RACK, 6 CELL (M19)			
301	DY6.186.070	VENT MOTOR CAPACITOR			
311	0154F00003	GASKET-14 INCH (M1, M2, M3, M4)			
311	0154F00004	GASKET-17.5 INCH (M5, M6, M7, M8, M9, M10, M11, M12)			
311	0154F00005	GASKET-21 INCH (M13, M14, M15, M16, M17, M18)			
311	0154F00006	GASKET-24.5 INCH (M19)			
321	0121F00333	21" COLLECTOR BOX 1.75" DIA (M13, M14, M15, M16)			
321	0121F00330	24.5" COLLECTOR BOX 2.125" DIA (M19)			
321	0121F00217	COLLECTOR BOX (M17, M18)			
321	0121F00126	COLLECTOR BOX 14" 1.375 DIA (M1, M2)			