



REPAIR PARTS

GCEC 80% High Efficient Furnace

GCEC800403AXAA

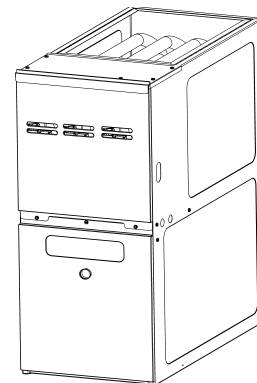
GCEC800603AXAA

GCEC800603BXAA

GCEC800804BXAA

GCEC800805CXAA

GCEC801005CXAA



This manual is to be used by qualified technicians only.

© 2019 Goodman Manufacturing Company, L.P. ♦ 5151 San Felipe St, Suite 500 ♦ Houston, TX 77056

Important Information

Index

Functional Parts List	3
Illustration and Parts	4 - 9

Views shown are for parts illustrations only, not servicing procedures

Text Codes:

AR - As Required

NA - Not Available

NS - Not Shown

00000000 - See Note

QTY - Quantity Example (QTY 3) (If Quantity not shown, Quantity = 1)

M - Model Example (M1) (If M Code not shown, then part is used on all Models)

Expanded Model Nomenclature:

Example M1 - Model#1 M2 - Model#2 M3 - Model#3

Goodman Manufacturing Company, L.P. is not responsible for personal injury or property damage resulting from improper service. Review all service information before beginning repairs.

Warranty service must be performed by an authorized technician, using authorized factory parts. If service is required after the warranty expires, Goodman Manufacturing Company, L.P. also recommends contacting an authorized technician and using authorized factory parts.

Goodman Manufacturing Company, L.P. reserves the right to discontinue, or change at any time, specifications or designs without notice or without incurring obligations.

For assistance within the U.S.A. contact:

Homeowner Support

Goodman Manufacturing Company, L.P.

19001 Kermier Road

Waller, Texas 77484

877-254-4729-Telephone

713-863-2382-Facsimile

For assistance outside the U.S.A. contact:

International Division

Goodman Manufacturing Company, L.P.

19001 Kermier Road

Waller, Texas 77484

713-861-2500-Telephone

713-863-2382-Facsimile

Functional Parts

Part

No: Description:

0130F00508	DUAL STAGE PRESSURE SWITCH (M1, M2, M3, M4)
0130F00509	DUAL STAGE PRESSURE SWITCH (M5, M6)
0130F00010	FLAME SENSOR
0151M00027	GAS VALVE
10690402	INTERLOCK SWITCH
0130F00071	LIMIT SWITCH (M3)
0130F00038	LIMIT, PRIMARY 120 LT BLUE
0130F00067	LIMIT-RED (M5, M6)
10123529	MANUAL RESET R.O.S. LIMIT
0131F00112	MOTOR X-13, BLOWER 1/2 H.P. (M1, M2, M3)
0131F00114	MOTOR X-13, BLOWER 1H.P. (M5, M6)
0131F00113	MOTOR X-13, BLOWER 3/4 H.P. (M4)
0131M00781P	MOTOR, VENT 2-STAGE
PCBBF139	PCB, IGNITION CONTROL
0130F00036	PRIMARY LIMIT - PINK 180° (M1, M2, M4)
0131F00166	PROGRAM, MOTOR (M2)
0131F00165	PROGRAM, MOTOR (M1)
0131F00158	PROGRAM, MOTOR (M5)
0131F00157	PROGRAM, MOTOR (M3)
0131F00156	PROGRAM, MOTOR (M4)
0131F00155	PROGRAM, MOTOR (M6)
0130F00008	SINI IGNITOR
0130M00140	TRANSFORMER 120V TO 24V, 40VA
0130M00140	TRANSFORMER,(120V TO 24V,40VA,

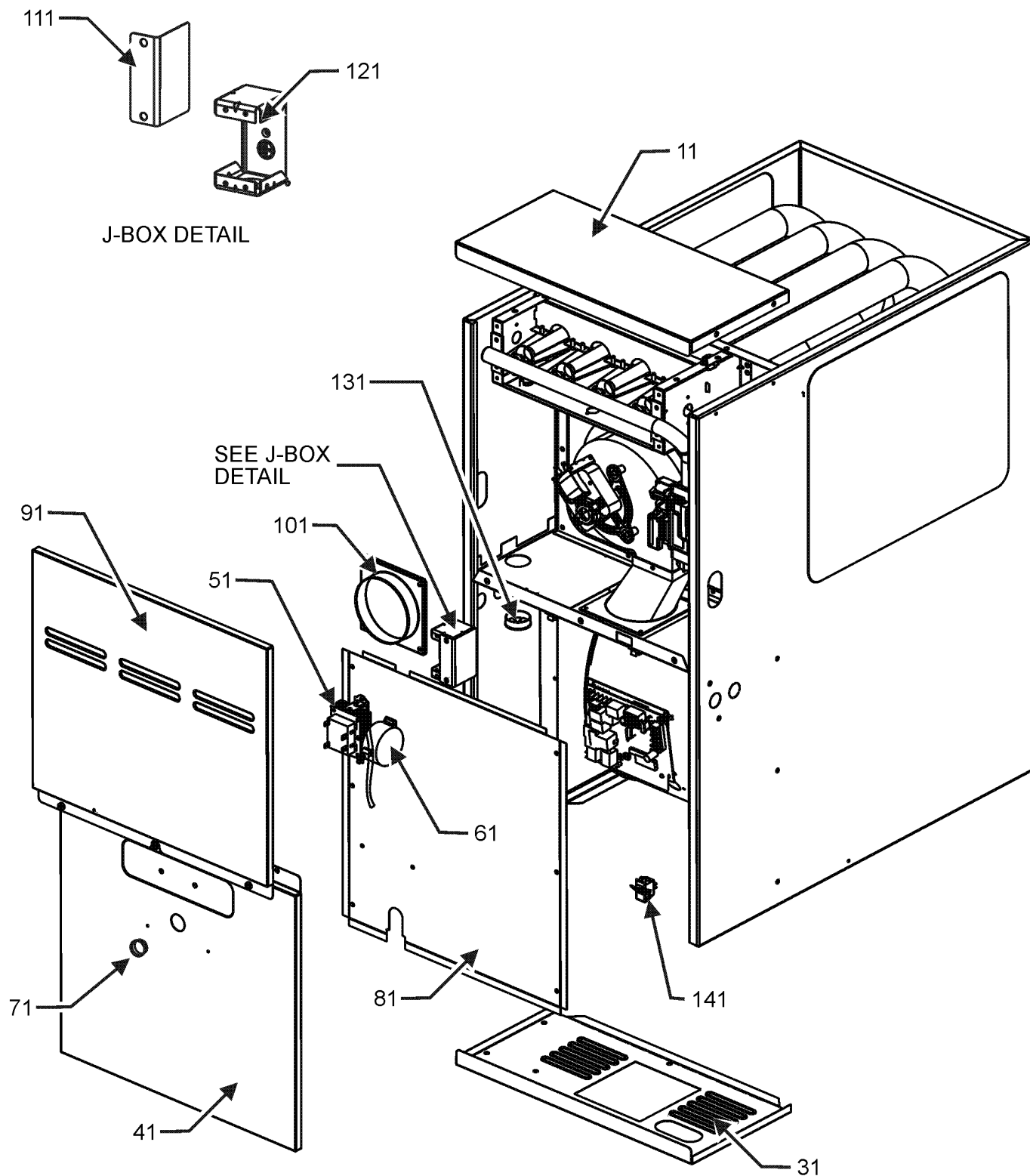
Expanded Model Nomenclature

M1 - GCEC800403AXAA M2 - GCEC800603AXAA M3 - GCEC800603BXAA M4 - GCEC800804BXAA M5 - GCEC800805CXAA M6 - GCEC801005CXAA
--

0161F00007	NAMEPLATE, GOODMAN
------------	--------------------

Cabinet Assembly

CABINET ASSEMBLY



Cabinet Assembly

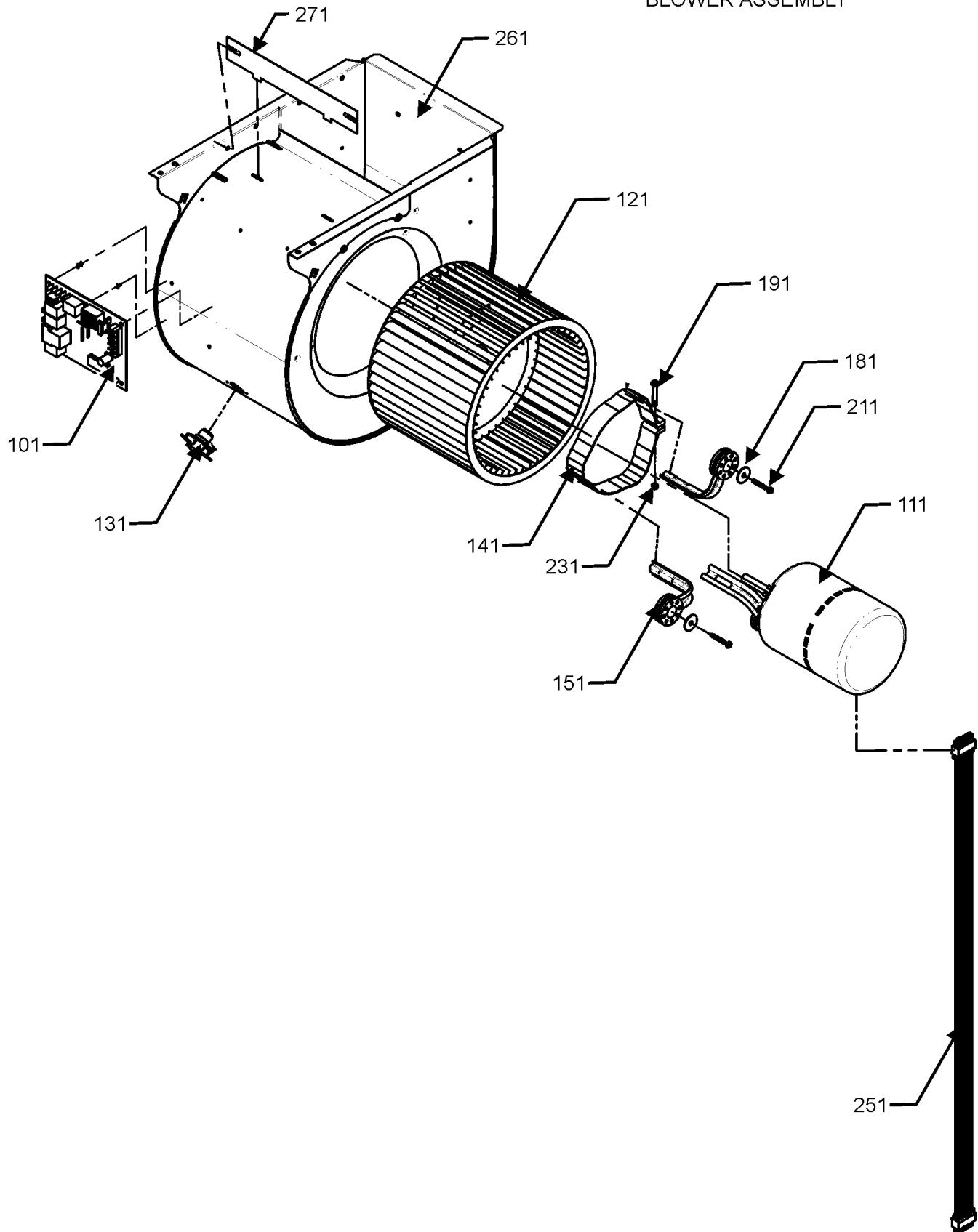
Ref. Part No: No:	Description:	Ref. Part No: No:	Description:
Image 1:			
11	0121F00183DG		PAINTED 14" FURNACE BOTTOM (M1, M2)
11	0121F00190DG		PAINTED 17.5" FURNACE BOTTOM (M3, M4)
11	0121F00191DG		PAINTED 21" FURNACE BOTTOM (M5, M6)
31	0121F00141DG		TOP, FURNACE 14"-PAINTED (M1, M2)
31	0121F00142DG		TOP, FURNACE 17.5"-PAINTED (M3, M4)
31	0121F00143DG		TOP, FURNACE 21"-PAINTED (M5, M6)
41	0121F00122DG		DOOR, BLOWER, 14"-PAINTED (M1, M2)
41	0121F00123DG		DOOR, BLOWER, 17.5"-PAINTED (M3, M4)
41	0121F00124DG		DOOR, BLOWER, 21"-PAINTED (M5, M6)
51	0130M00140		TRANSFORMER 120V TO 24V, 40VA
61	0130F00508		DUAL STAGE PRESSURE SWITCH (M1, M2, M3, M4)
61	0130F00509		DUAL STAGE PRESSURE SWITCH (M5, M6)
71	B1392139		VIEW PORT BUSHING-BLOWER DOOR
81	0121F00741		DOOR, INNENR 14" (M1, M2)
81	0121F00227		DOOR, INNER 17.5" (M3, M4)
81	0121F00228		DOOR, INNER 21" (M5, M6)
91	0121F00118DG		DOOR CTRL ACCESS, 14"-PAINTED (M1, M2)
91	0121F00120DG		DOOR CTRL ACCESS, 21"-PAINTED (M5, M6)
91	0121F00119DG		DOOR CTRL ACCESS, 17.5"-PAINTED (M3, M4)
101	4023500		CHIMNEY TRANSITION TOP
111	4015502		J-BOX COVER
121	4014502		J-BOX
131	0163F00001		UNIVERSAL BUSHING WITH SLICE (M1, M2)
131	B1392147		UNIVERSAL BUSHING WITH SLICE (M3, M4, M5, M6)
141	10690402		INTERLOCK SWITCH
NS	0161F00007		NAMEPLATE, GOODMAN

Expanded Model Nomenclature

M1 - GCEC800403AXAA
M2 - GCEC800603AXAA
M3 - GCEC800603BXAA
M4 - GCEC800804BXAA
M5 - GCEC800805CXAA
M6 - GCEC801005CXAA

Blower and Control Panel Assembly

BLOWER ASSEMBLY



Blower and Control Panel Assembly

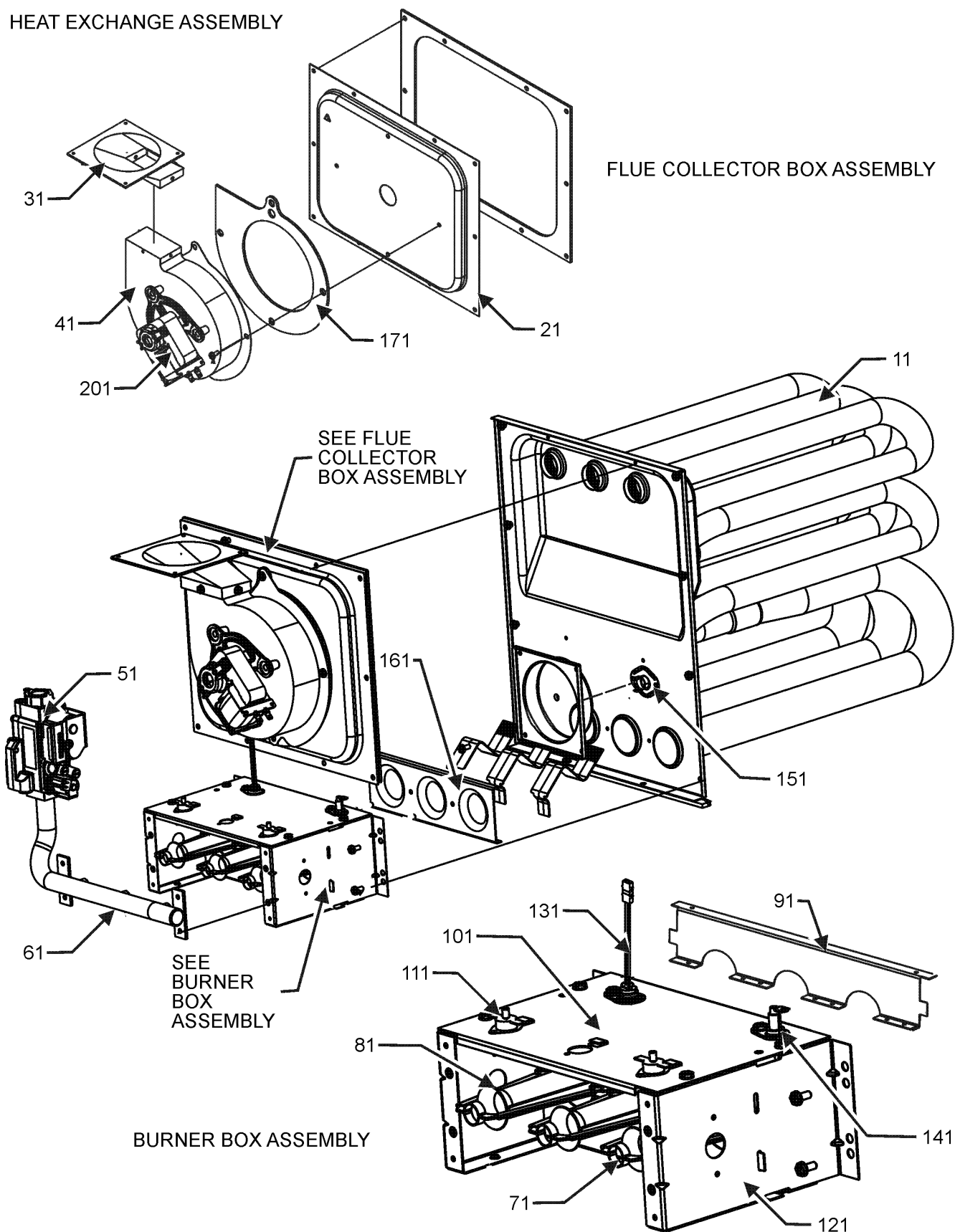
Ref. Part No: No:	Description:	Ref. Part No: No:	Description:
Image 1:			
21	20477501		GROMMET-HORSESHOE
31	0130M00140		TRANSFORMER,(120V TO 24V,40VA,
51	PCBBF139		PCB, IGNITION CONTROL
71	0121F00186		BRACKET, CONTROL (M3, M4, M5, M6)
81	0121F00229		HEAT SHIELD
111	0131F00112		MOTOR X-13, BLOWER 1/2 H.P. (M1, M2, M3)
111	0131F00114		MOTOR X-13, BLOWER 1H.P. (M5, M6)
111	0131F00113		MOTOR X-13, BLOWER 3/4 H.P. (M4)
121	B1368034		BLOWER WHEEL (10 X 6) (M1, M2)
121	0150M00042		WHEEL, BLOWER (10 X 10) (M5, M6)
121	0150M00043		WHEEL, BLOWER (10 X 8) (M3, M4)
131	0130F00038		LIMIT, PRIMARY 120 LT BLUE
141	0121M00039		MOUNT BAND, MOTOR (HEAVY DUTY)
141	0121M00039		MOUNT BAND, MOTOR (HEAVY DUTY)
151	B1376863		MOTOR MOUNT ARM (HEAVY DUTY) (QTY 3)
181	B1392918		WASHER, FLAT 1/4 ID X 1 OD (QTY 3)
191	0163M00320		HEX HEAD ALL THREAD TAP BOLT
211	M0250565		SCREW-TC 1.25" (QTY 3)
211	M0250565		SCREW-TC 1.25" (QTY 3)
231	B1393800		LOCKNUT, NYLON INSERT 1/4 20
251	0159F00076		WIRING HARNESS
261	2539307		BLWR SHL ASM 10X10 10X10 (M5, M6)
261	2539305		BLWR SHL ASM 10X6 10X6 (M1, M2)
261	2539306		BLWR SHL ASM 10X8 10X8 (M3, M4)
271	764741		BLWR BLK-OFF,10X10 (M5, M6)
271	764739		BLWR BLK-OFF,10X6 (M1, M2)
271	764740		BLWR BLK-OFF,10X8 (M3, M4)
NS	0131F00155		PROGRAM, MOTOR (M6)
NS	0131F00156		PROGRAM, MOTOR (M4)
NS	0131F00157		PROGRAM, MOTOR (M3)
NS	0131F00158		PROGRAM, MOTOR (M5)
NS	0131F00165		PROGRAM, MOTOR (M1)
NS	0131F00166		PROGRAM, MOTOR (M2)

Expanded Model Nomenclature

M1 - GCEC800403AXAA
M2 - GCEC800603AXAA
M3 - GCEC800603BXAA
M4 - GCEC800804BXAA
M5 - GCEC800805CXAA
M6 - GCEC801005CXAA

Heat Exchange Assembly

HEAT EXCHANGE ASSEMBLY



Heat Exchange Assembly

Ref. Part No: No:	Description:	Ref. Part No: No:	Description:
Image 1:			
11	0270F03525		HEAT EXCHANGER ASSY (M1)
11	0270F03526		HEAT EXCHANGER ASSY (M2)
11	0270F03527		HEAT EXCHANGER ASSY (M4)
11	0270F03528		HEAT EXCHANGER ASSY (M6)
11	0270F03899		HEAT EXCHANGER ASSY (M3)
11	0270F03900		HEAT EXCHANGER ASSY (M5)
21	0121F00327		14" COLLECTOR BOX 1.125" DIA (M1)
21	0121F00332		17.5" COLLECTOR BOX 1.375" DIA (M3)
21	0121F00331		17.5" COLLECTOR BOX 1.500" DIA (M4)
21	0121F00365		21" COLLECTOR BOX 1.437" DIA. (M5)
21	0121F00333		21" COLLECTOR BOX 1.75" DIA (M6)
21	0121F00198		COLLECTOR BOX, 14" 1.75 DIA (M2)
31	0128F00006		CHIMNEY TRANSITION BOTTOM
41	0131M00781P		MOTOR, VENT 2-STAGE
51	0151M00027		GAS VALVE
61	0120F00006		MANIFOLD (M1)
61	0120F00007		MANIFOLD (M2, M3)
61	0120F00008		MANIFOLD (M4, M5)
61	0120F00009		MANIFOLD (M6)
71	10716005		ORIFICE (QTY 2)
81	B4022700		INSHOT BURNER ASSY 3" (QTY 2)
91	0121F00167		BURNER RACK, 2 CELL (M1)
91	0121F00168		BURNER RACK, 3 CELL (M2, M3)
91	0121F00169		BURNER RACK, 4 CELL (M4, M5)
91	0121F00170		BURNER RACK, 5 CELL (M6)
101	0121F00162		TOP, BURNER BOX 2 CELL (M1)
101	0121F00163		TOP, BURNER BOX 3 CELL (M2, M3)
101	0121F00164		TOP, BURNER BOX 4 CELL (M4, M5)
101	0121F00165		TOP, BURNER BOX 5 CELL (M6)
111	10123529		MANUAL RESET R.O.S. LIMIT
121	0121F00146		BURNER BOX SIDE (QTY 2)
131	0130F00008		SINI IGNITOR
141	0130F00010		FLAME SENSOR
151	0130F00071		LIMIT SWITCH (M3)
151	0130F00067		LIMIT-RED (M5, M6)
151	0130F00036		PRIMARY LIMIT - PINK 180° (M1, M2, M4)
161	4028000		ORIFICE PLATE, 2CELL (M1)
161	4028001		ORIFICE PLATE, 3CELL (M2, M3)
161	4028002		ORIFICE PLATE, 4 CELL (M4, M5)
161	4028003		ORIFICE PLATE, 5CELL (M6)
171	0154F00003		GASKET-14 INCH (M1, M2)
171	0154F00004		GASKET-17.5 INCH (M3, M4)
171	0154F00005		GASKET-21 INCH (M5, M6)
201	DY6.186.070		VENT MOTOR CAPACITOR
NS	0259F00283		DOWNFLOW MAIN WIRE HARNESS
NS	0259F00066		INDUCER HARNESS ASSY
NS	0259F00281		WIRE HARNESS ASSY

Expanded Model Nomenclature

M1 - GCEC800403AXAA
M2 - GCEC800603AXAA
M3 - GCEC800603BXAA
M4 - GCEC800804BXAA
M5 - GCEC800805CXAA
M6 - GCEC801005CXAA